



**Save Mount Diablo**

PRESERVE • DEFEND • RESTORE • ENJOY

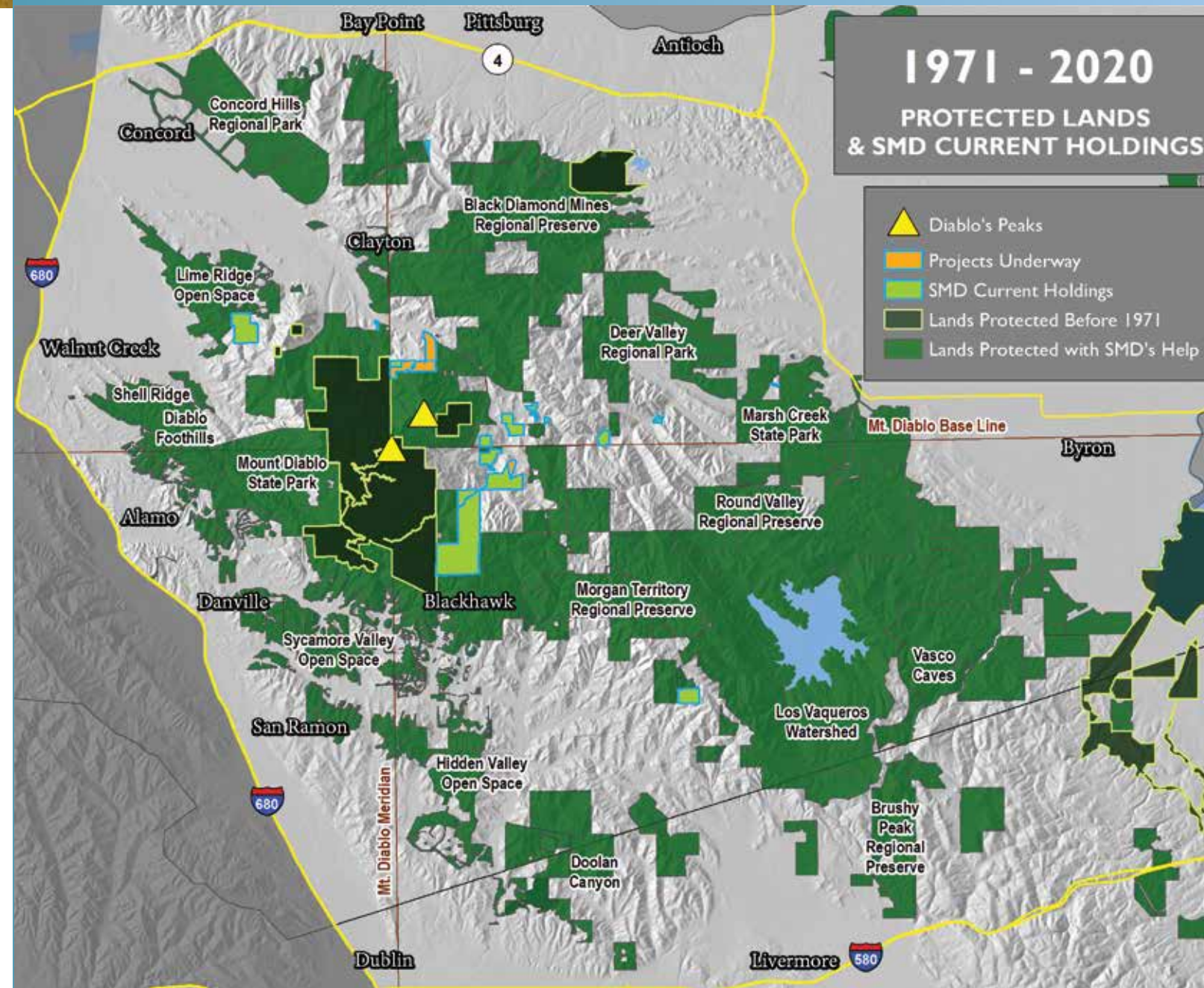
Stephen Joseph

# 2019-2020 Annual Report



# Protecting DIABLO'S WILD LANDS

This map shows the expansion of protected lands on Mount Diablo from **6,788 acres in 1971**, when Save Mount Diablo was founded, **to more than 120,000 acres** that have been protected by Save Mount Diablo and our great partners.



## Dear Supporters,

We are so grateful for your support, which enabled us to complete an extremely successful fiscal year that ran from April 1, 2019 to March 31, 2020.

On the land acquisition front, we signed two agreements to protect two very strategic properties. On December 31, 2019, Save Mount Diablo and the Concord Mt. Diablo Trail Ride Association signed an option agreement, 15 years in the making. It gave our organization two years to raise a little over \$1.04 million to permanently protect 154 acres, one of the most strategic and important unprotected properties remaining on Mount Diablo's main peaks.

In early March 2020, Save Mount Diablo successfully entered into a purchase agreement to buy and protect the strategic 28.73-acre Smith Canyon for \$650,000. This property can become an important gateway to Curry Canyon from Morgan Territory Road.

With our land advocacy work, we also have great examples of success. After more than 14 years of advocacy efforts by Save Mount Diablo and our good partners, most of the 2,500 acres for a new Concord Regional Park were conveyed to our important partner, East Bay Regional Park District, in July 2019 as part of the Concord Naval Weapons Station Reuse Plan.

Also, Save Mount Diablo and our good partners helped lead a successful campaign that resulted in Magee Preserve being approved by Danville voters in March 2020. That success means that 93 percent of the 410-acre Magee Preserve property is now permanently protected as public open

space. Further, we advanced understanding of the need to better protect the Diablo Range.

We saw many successes with our educational programs as well. For example, we have completed 11 Conservation Collaboration Agreements (CCAs) with local schools and businesses, with four such agreements completed in this fiscal year. In surveys of numerous CCA participants, 95 percent report they would recommend the program to other students. Our free educational public hike program, Discover Diablo, had more than 300 participants this fiscal year.

You helped us realize success with our stewardship efforts too. For example, this fiscal year our volunteers donated well over 2,000 work hours to our efforts to steward the couple thousand acres under our care.

Your outstanding support is also how we will not only weather the coronavirus crisis, but also continue to successfully advance our mission to protect our critical natural foundation for our long-term well-being.

With Gratitude,



Edward Sortwell Clement, Jr.  
Executive Director  
Save Mount Diablo

Photo on the front cover is of the Concord Mt. Diablo Trail Ride Association land that we are working to protect.

### BOARD OF DIRECTORS

Effective April 1, 2020

Jim Felton, *President*  
Burt Bassler, *Treasurer*  
Liz Harvey Roberts, *Vice President & Secretary*  
Keith Alley  
John Gallagher  
Joe Garaventa  
Garrett Girvan  
Claudia Hein  
Scott Hein  
Giselle Jurkanin  
Margaret Kruse  
Carol Lane  
Frank Martens  
Bob Marx  
Robert Phelps  
Malcolm Sproul  
Jeff Stone

### STAFF

Ted Clement  
*Executive Director*  
Seth Adams  
*Land Conservation Director*  
Sean Burke  
*Land Programs Director*  
Karen Ferriere  
*Development Director*  
Monica Oei  
*Finance & Administration Director*  
Megan Shockro  
*Director of Major Gifts & Planned Giving*  
Denise Castro  
*Education & Outreach Associate*  
Hidemi Crosse  
*Senior Accountant*  
Juan Pablo Galván  
*Senior Land Use Manager*  
Shannon Grover  
*Senior Development Associate & Events Manager*  
Dana Halpin  
*General Office Manager*  
Laura Kindsvater  
*Communications Manager*  
Katie Lopez  
*Accounting & Administration Associate*  
Roxana Lucero  
*Land Stewardship Associate*  
Joanne McCluhan  
*Executive Assistant*  
Ian Smith  
*Development Associate & Database Manager*  
Peter Townley  
*Land Stewardship Manager*





# THE DIABLO RANGE

Save Mount Diablo has launched a campaign to connect Mount Diablo to the whole of the Diablo Range, a 150-mile long mountain range and biodiversity refuge that’s next door to millions of people, but that most people know nothing about.

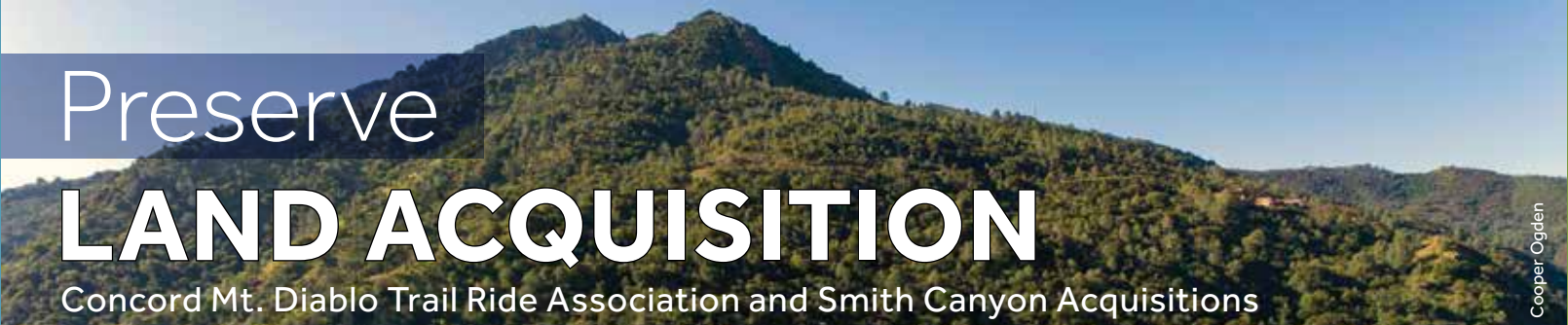
Seventy-five percent of the ecologically important area around Mount Diablo has been preserved, while in the full 150-mile range, only 24 percent of the landscape has any protection. Save Mount Diablo’s first step is defining the range as a whole for the conservation community and the public and educating them about its importance.

As part of this campaign, Save Mount Diablo helped to sponsor a newly published cover story and supplement about the Diablo Range in *Bay Nature* magazine. “The Spine of California” explores the most rugged, plant-rich stretch of California you’ve never heard of. It’s the first article ever published specifically about the Diablo Range, and it includes



## SAVE MOUNT DIABLO IN THE MEDIA

<p><b>East Bay Times</b></p> <p><b>Save Mount Diablo answers ‘nature deficit disorder’ by bringing kids to foothills</b></p> <p>Antioch High School students listen to Save Mount Diablo staff during a program at SMD’s Big Bend property located on Marsh Creek Road in ... Dec 3, 2019</p>		<p><b>Diablo Magazine</b></p> <p><b>The East Bay’s Most Excellent Adventures</b></p> <p>Save Mount Diablo hosts this guided hiking series that allows outdoor enthusiasts to learn about their wild environs while working up a bit of a ... Apr 19, 2019</p>	
<p><b>NBC Bay Area</b></p> <p><b>Seth Adams Interview – Save Mount Diablo</b></p> <p>New lands to be protected by Save Mount Diablo. Be inspired by the promise of a magnificent trail we may be able to follow in the near future ... Apr 1, 2019</p>		<p><b>East Bay Times</b></p> <p><b>In brief: Save Mount Diablo to buy, protect Smith Canyon near Clayton</b></p> <p>CLAYTON. Save Mount Diablo (SMD) has successfully entered into a purchase agreement to buy and protect the beautiful and strategic 28.73- ...</p>	
<p><b>EastCountyToday (press release) (blog)</b></p> <p><b>Regional Park at Concord Naval Weapons Station Reaches ...</b></p> <p>“The U.S. Navy, National Park Service, City of Concord, and Save Mount Diablo have been tremendous partners in this effort,” added Lane. Jul 10, 2019</p>		<p><b>Bay Nature</b></p> <p><b>Photo Gallery: Diablo Range Biodiversity</b></p> <p>Photo Gallery: Diablo Range Biodiversity. by Eric Simons. March 24, 2020. Sponsored by Save Mount Diablo and Santa Clara Valley Open Space Authority ...</p>	
<p><b>Marin Independent Journal</b></p> <p><b>12 coolest Bay Area things you didn’t know you could do</b></p> <p>Save Mount Diablo, an organization dedicated to preserving the mountain’s open space, will lead a four-hour hike on the mountain Oct. 6 to see ... Aug 14, 2019</p>		<p><b>The Mercury News</b></p> <p><b>Letter: Strong CEQA shields Mount Diablo-area natural lands</b></p> <p>... with safeguarding natural resources; and enhance the region’s quality of life, we at Save Mount Diablo urge legislators to keep CEQA strong. Apr 25, 2019</p>	



The 2019–2020 fiscal year was an exciting one for Save Mount Diablo’s acquisition efforts. During this time, our organization secured a conservation easement option agreement with the Concord Mt. Diablo Trail Ride Association in Clayton and also secured a purchase agreement to acquire a strategic property, Smith Canyon in Morgan Territory.

On the morning of New Year’s Eve, 2019, Save Mount Diablo and the Concord Mt. Diablo Trail Ride Association signed an option agreement that was 15 years in the making to preserve and permanently protect about 154 acres of one of the most pivotal and unprotected properties remaining on Mount Diablo’s main summits.

The property stretches across the northern aspects of North Peak from the pastoral Three Springs area, toward the ethereal and ephemeral waterfalls found on the Falls Trail, beautiful Cardinet Oaks, and upper Young Canyon.

Save Mount Diablo paid a \$50,000 option payment to secure the option agreement. It gives us two years to raise a little more than \$1.04 million to purchase the perpetual conservation easement on 154 acres of critical open space, which will continue to be owned by the Concord Mt. Diablo Trail Association. The association will keep about 47 acres, where its buildings are located, outside of the proposed 154-acre conservation area.

The proposed acreage to be conserved is surrounded on three sides by Mount Diablo State Park and contiguous with Save Mount Diablo’s conserved Young Canyon property and its North Peak Ranch acquisition project. This acquisition is highly strategic because it builds upon already protected wildlife habitat corridors, scenic views, and watershed lands.

In early March 2020, Save Mount Diablo entered a purchase agreement to buy and protect the strategic 28.73-acre Smith

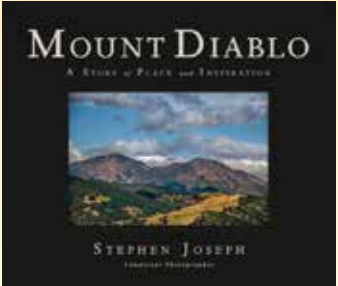
Canyon east of Clayton for \$650,000. This incredible oak woodland property can become an important gateway into Curry Canyon from Morgan Territory Road.

Smith Canyon is blanketed by blue oak woodlands, grasslands, and a live oak–bay riparian corridor. This incredible property provides great habitat for California



red-legged frogs and Alameda whipsnakes, special status species that are likely to be present on the property. With this acquisition, Save Mount Diablo can strengthen the wildlife habitat corridors that rare and native plants and animals depend upon in the Mount Diablo area.

The acquisition of these properties is paramount in the fight against climate change as well. The oak woodlands, oak savannas, and grasslands found on each of these properties serve as carbon sinks, absorbing and filtering greenhouse gases from our atmosphere. In August 2019, the UN Intergovernmental Panel on Climate Change issued a new report, *Climate Change and Land*. This report focused on how land is under increased pressure from humans and climate change, but also noted that land is a critical part of the solution to climate change. With the conservation of lands like these, we can directly address the climate crisis in lasting ways.



California landscape photographer Stephen Joseph has published his new book, *Mount Diablo, A Story of Place and Inspiration*. Sponsored by Save Mount Diablo, East Bay Regional Park District, J. Rockcliff Realtors, Bishop Ranch, and Claudia and Scott Hein, it features more than 200 panoramic photos that celebrate Mount Diablo’s extraordinary lands. Accompanying the photos are inspiring essays, including one by Seth Adams and one by Ted Clement of Save Mount Diablo. **Signed copies of Stephen’s new book are available on his website at <https://stephenjosephphoto.gallery/order-books>.**



# Defend

# LAND USE PLANNING & ADVOCACY

Scott Hein

## LAND USE PLANNING

Despite the challenges, we continue to defend Mount Diablo and its connections to the creeks, foothills, and wider mountain range that give us such amazing views and allow populations of native wildlife and plants to persist. This past year, we've continued to monitor more than 50 agency agendas, work with stakeholders and coalitions, and respond to more than a dozen project and policy proposals.

## CONCORD

We celebrated the transfer of more than 2,000 acres of land from the U.S. Navy to the National Park Service and then to the East Bay Regional Park District as a new regional park. Although the city of Concord's development of the other half of the Concord Naval Weapons Station Reuse Area has been delayed, once things start again we will work with partners to ensure the community can enjoy an additional 1,000 acres of urban parks, including two long linear parks, as well as other community benefits. The new regional park will include 28 miles of new public trails.

## DANVILLE

Because of the massive support of Save Mount Diablo and the help of hundreds of volunteers and Danville residents, in March the Yes on Measure Y campaign succeeded in defending the approval of the Magee Preserve project, which permanently protects 93 percent of the 410-acre Magee property—381 acres—and will provide new recreational trail opportunities and connect several protected areas together. The new preserve will include between five and seven miles of new public trails.

## ANTIOCH

In 2018, Save Mount Diablo and our partners in the

Antioch Community Coalition to Save Sand Creek drafted and qualified our "Let Antioch Voters Decide Initiative" to protect three square miles of grassland, creek, and wildlife habitat in the Sand Creek area west of Deer Valley Road in south Antioch. Though the city council adopted our initiative, we knew bad developers would try to stop us. Two of them, Zeka and Richfield, have made legal challenges that have delayed protection of the Sand Creek area considerably. The courts threw out another initiative that was insurance for ours and told the council to immediately put ours on the November 2020 ballot. Our focus now is getting our initiative on the ballot and winning that campaign.

## PITTSBURG

The beautiful hills that lie southwest of Pittsburg face a huge threat from a Seeno company proposal, called the Faria project, to build 1,500 houses literally on top of this beautiful scenic ridgeline and next to the new Concord regional park. A proposal to extend James Donlon Blvd. would also destroy six creek canyons and potentially end a working cattle ranch. We alerted agencies to inadequate environmental review and remain ready to respond should these projects move forward.

## BRENTWOOD

This past November, Brentwood voters were asked to vote on Measure L, an expansion of Brentwood's Urban Limit Line to include 815 acres and allow future development on 590 acres next to the city. Save Mount Diablo supported Measure L because it would have protected three times as much land (1,785 acres): 225 acres on-site and 1,560 acres of incredibly high conservation-value land next to Mount Diablo. Although Measure L was defeated at the ballot box, the trade-off we negotiated lasts for 10 years.

# Restore

# STEWARDSHIP



~ 12,000  
gallons of  
waste and  
recycling  
collected



233  
stewardship  
volunteers



109  
plantings



2,115  
stewardship  
hours



Save Mount Diablo currently owns or manages **19** properties—nearly **2,000** acres. These properties include perpetual conservation easements on two properties, totaling **20** acres. We also have stewardship activities including restoration, monitoring, and conservation grazing on **three** additional properties we do not own.

Here are some of the accomplishments we are especially proud of this fiscal year.

- The Diablo Restoration Team (DiRT) completed **21** workdays nurturing **five** creek restoration projects, including **11** sites spread across **six** properties.
- We responded to wildfire damage from the 2018 Marsh Fire that burned three of our properties. We replaced split rail fence, re-opened restoration sites to our DiRT workdays, and replaced our water pump system, which is used to water planting sites in the dry months. Stewards designed and built an upgraded, eco-friendly, solar-powered water pump system that automatically refills the water tank at the top of the hill. We no longer need to rely on gas-powered generators to provide enough energy to push the water uphill.
- Amidst workday cancellations because of climate change (which is causing extreme heat, hazardous air quality, and high fire-danger risks) and COVID-19, we have focused our workdays on safety trainings as well as more fire abatement year-round. We completed **18** stewardship workdays, including extra fire abatement in addition to that in May. We accomplished **12** Integrated Pest Management workdays to remove non-native and invasive species on our properties and manage the spread of Sudden Oak Death.
- We finished major capital projects on several of our properties. We repaired the compromised roof at Wright Canyon. We replaced **thousands** of feet of degraded fencing with wildlife-friendly fencing at Curry Canyon Ranch, Mangini Ranch, and Anderson Ranch.
- All planned improvements were finally completed at the Curry Canyon Ranch field station, including a deck and pergola for shade next to the creek, and safety features like hand railing next to steps and ramps to major entrances into the field station.
- We hosted a Coastal Cleanup workday in Kirker Creek. Students from Pittsburg High School and other community members removed all sorts of trash, finding mostly micro-sized trash this year. In total, **507** plastic pieces smaller than 2.5 cm were removed; **165** plastic bags and **160** cigarette butts were also taken out.

## Thanks to All of Our Volunteers

374 volunteers



7,438+ hours



Volunteers are the life force of Save Mount Diablo. From our outstanding Trail Dogs doing volunteer trail and stewardship work, to setting up tables for Moonlight on the Mountain once a year, to dedicating dozens of hours monitoring our properties, our talented and generous volunteers are incredibly important. We can't do it without them! Our volunteers not only work side by side with us, they give us an extra dose of inspiration to continue our work to preserve open spaces right here in the Bay Area for people to enjoy and wildlife to live in.

We thank all of our volunteers from the bottom of our hearts.



# Enjoy RECREATION



# Learn EDUCATION & OUTREACH

Laura Kindsvater



Megan Shockro



Scott Hein



Laura Kindsvater



Al Johnson



Al Johnson



Laura Kindsvater

Each year, we invite people to enjoy the beauty of Mount Diablo's wild lands through different types of recreational events.

We hosted numerous events on the mountain to share the area's wildlife and cultural history with our supporters and to encourage recreation consistent with the protection of natural resources.

- Save Mount Diablo and Brazen Racing partnered again to host the Diablo Trails Challenge, with a distance suitable for nearly every interest: a 50K, half marathon, 10K, and 5K. **More than 1,090** runners enjoyed a beautiful day out on the trails.
- Cyclists put their climbing skills to the test riding up Mount Diablo's slopes to the Summit for the **38th** annual Mount Diablo Challenge. Hosted by Valley Spokesmen Bicycling Club, **over 550** cyclists rode **11.2** miles, climbing **3,249** feet in

elevation. Thanks to the support of the Nathan M. Ohrbach Foundation, Save Mount Diablo added **more than 145** new and renewed members to our organization who participated in this year's challenge.

- **Fourteen** participants in Four Days Diablo, our annual backpacking tour, enjoyed learning more about Mount Diablo's treasures while hiking and camping along the 31-mile Diablo Trail. Dedicated volunteers set up the campsites, and local restaurants—including Esin Restaurant & Bar, Sunrise Bistro & Catering,

and Prima Ristorante—prepared delicious meals for the adventurers.

- **More than 460** guests attended our **18th** annual Moonlight on the Mountain celebration, our signature gala with live music, dancing, silent and live auctions, and a gourmet dinner by Sunrise Bistro & Catering. Moonlight on the Mountain is held at China Wall in Mount Diablo State Park, a stunningly gorgeous and intimate venue that creates a special atmosphere for our guests. **Over \$500,000** was raised to support Save Mount Diablo.

Save Mount Diablo connects people to and inspires people with nature in a myriad of ways.

Here are some of our efforts and accomplishments in education and outreach between April 1, 2019 and March 31, 2020.

- Save Mount Diablo granted nearly **\$12,000** via our Dr. Mary Bowerman Science and Research Program. The program supports research and discoveries in the Diablo region by awarding grants to researchers working on all sorts of topics, including niche partitioning of Mount Diablo scorpions, population fluxes of the invasive New Zealand mud snail, and conservation of golden eagles. Grants have been awarded to schools and organizations such as UC Berkeley, UC Davis, the US Geological Survey, CSU Stanislaus, and Mills College. **Seven** grants were given between April 2019 and March 2020.
- We hosted our **sixth** annual colloquium in December to present the findings of recently conducted

research. This year we had special guest speakers at the colloquium including Dr. Ana Alvarez, the Deputy General Manager of East Bay Regional Park District; and Brian Richardson, a volunteer from the Kestrel Campaign.

- Save Mount Diablo hosted its **12th** annual BioBlitz in Mangini Ranch, Lime Ridge Open Space, and a portion of Arroyo del Cerro. With the help of **42** scientific experts, naturalists, and enthusiastic volunteers, we recorded **359** total species.
- We sponsored and released a new Audible Mount Diablo Guide—*The Morning Side of the Mountain*, about Morgan Territory Regional Preserve—and placed the next guide into production. We also held

two sold-out screening events to premiere the new Audible Guide, featuring Q&A panels with special guests, and published the Audible Guide to a mobile podcast platform.

- An *OpenRoad with Doug McConnell* episode was aired in April 2019 on NBC Bay Area featuring the Conservation Collaboration Agreement with Joaquin Moraga Intermediate School and sponsor Bedell Frazier Investment Counselling. An additional segment was also aired in April 2019 featuring an interview by Doug McConnell with Seth Adams called *Imagining a Summit-to-Sea Trail*.
- We held numerous speakers series events, tabled at **nine** events, and gave multiple presentations to the public.

## Discover Diablo Free Public Guided Hikes Program



Staff and volunteer hike leaders hosted a series of free public hikes for our Discover Diablo program. This year, **313** hikers attended **17** outings on Save Mount Diablo properties and partner agencies' land. Nearly all hikes **sold out**. The Discover Diablo program is now in its fourth year and is proudly sponsored by Martinez Refining Company.

## 2019 BioBlitz Survey Results



Laura Kindsvater





# FOREVER WILD

Moving Mountains to Save the Mountain

Scott Hein



Thanks to our outstanding community members, Save Mount Diablo is proud to announce we have raised a remarkable \$13,013,000 during the *Forever Wild Campaign*!

Since launching this historic campaign in 2012, we have grown the number of our acquisitions, created an endowment to ensure long-term reserves for stewardship, and doubled the size of our Legal Defense Fund. With less than \$2 million needed to reach our goal, we hope to see the completion of the *Forever Wild Campaign* this year.

Thank you for sharing our vision and participating in this extraordinary effort. We hope you share our pride in all that we've accomplished together.

The **Land Acquisition Opportunity Fund** allows us to protect strategically located land before it's lost forever to development. Since 2012, through our strategic acquisitions, we have conserved Curry Canyon Ranch, North Peak Ranch, Highland Springs, Hanson Hills, Anderson Ranch, Rideau, Big Bend, and Smith Canyon. Through the *Forever Wild Campaign*, we have raised \$10.4 million for acquisition purposes and stewardship operating costs.

The new **Stewardship Endowment Fund** has grown to \$2,435,500, and when it's fully funded at \$3 million, we will begin to take a sustainable draw on the interest earned. That interest will perpetually support the stewardship activities on our conserved lands, including many with local school children.

The **Legal Defense Fund** provides resources to legally defend our conserved lands on and around Mount Diablo, and with each acquisition victory, we have an increased responsibility to be ready to defend against threats to our conserved lands. During the campaign, we have doubled the size of this fund to \$100,000.

Fiscal year 2019–2020 was a banner year for the campaign, with a total of \$1,962,500 received from more than 70 campaign specific supporters. Our first formal *Forever Wild Campaign* fundraising event, in June 2019 with over 100 guests, netted more than \$325,000.

We are grateful for our many *Forever Wild* supporters who have joined us in this extraordinary opportunity to make a lasting impact; your incredible leadership has led to our success.

If you'd like to participate in the campaign, funds are still needed to purchase a perpetual conservation easement on 154 critical open space acres on the northeast slopes of Mount Diablo that are currently owned by the Concord Mt. Diablo Trail Ride Association.



Ted Clement

## A SPECIAL CONNECTION TO NATURE AND SAVE MOUNT DIABLO



**Jeanne Thomas's** family came to California as part of the 49er Gold Rush and eventually settled in Concord and then Oakland, where Jeanne was born. She recalls her first memorable hiking experience at age 11, when she attended summer camp in the High Sierra. Jeanne attended Mills College and went on to spend 31 years with Kaiser Industries, retiring early in 1983.

Jeanne has been with a women's hiking group for over 35 years, covering much of the Bay Area, and Mount Diablo is one of their favorite destinations. Hiking opened up the incredible natural world of plants and birds, especially wildflowers. She began to take pictures of flowers, especially close-ups, which she makes into a desk calendar for friends and staff of Save Mount Diablo.

Mitchell Canyon is among Jeanne's favorite places to hike. "Every time we hike there, I bless Save Mount Diablo for working to preserve it. In my worst dreams, I picture executive homes and streets all over the mountain." She wonders, "How could I not volunteer for Save Mount Diablo? How could I not contribute to keep it strong?"

Jeanne first became involved with Save Mount Diablo as an office volunteer. When her good friend Bob Adams, an SMD board member, passed away, Jeanne decided to join the Development Committee.

As a Rossmoor resident, Jeanne became our liaison to the retirement community and has organized annual receptions for over a decade. Jeanne has also sponsored tables at the annual Moonlight on the Mountain event and participated in the *Forever Wild Capital Campaign*. She appreciates the many ways she's able to help Save Mount Diablo.

When Jeanne began thinking about her dream for future generations to enjoy the land that she holds dear, she decided to include Save Mount Diablo in her estate plans by designating us as a beneficiary of her IRA and several charitable gift annuities.

"My inspiration for philanthropy came from my parents, who even at the height of the Depression always contributed to the Community Chest. I always made sure to be an active volunteer and contribute when I could. Bob Adams was a very generous person, and he was also an inspiration to me."

If you've included Save Mount Diablo in your estate plans, please let us know. To learn more, please contact Megan Shockro at [mshockro@savemountdiablo.org](mailto:mshockro@savemountdiablo.org) or (925) 949-4513.



Scott Hein



We invite you to join the *Forever Wild Campaign* with a special gift to Save Mount Diablo. Please contact Megan Shockro at [mshockro@savemountdiablo.org](mailto:mshockro@savemountdiablo.org) or call (925) 949-4513.



# COMMUNITY CONSERVATION

Conservation Collaboration Agreement Program

# THE GLOBAL CLIMATE STRIKE



The Global Climate Strike from September 20th to 27th, 2019 may have been the largest demonstration and call for doing more to protect our natural world in the history of our planet. Save Mount Diablo and schools we partner with in our Conservation Collaboration Agreement program came together to show our support for the Global Climate Strike, our young people, their futures, and doing more to protect nature. We were part of history like that first Earth Day in 1970 when students stood up en masse.

We and our partner schools made “human banner” messages at our conserved Curry Canyon Ranch in support of the Global Climate Strike. Our “SOS” message was our urgent call for the United States to come together and help the world address the existential threat of climate change. Before Bob Marley sang about “One Love,” John Muir, the renowned father of the modern environmental movement and our National Parks, wrote about it in 1872. Climate change is a symptom of an underlying serious problem, the lack of meaningful and respectful relationships between people and nature. In this climate change crisis we face, John Muir would almost certainly counsel us that an attitude of “One Love” is required.

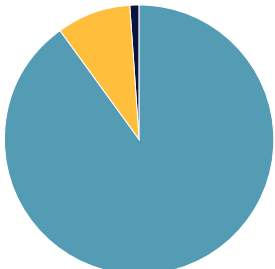


Light and shadow and breeze  
SUN  
glossy, dewy  
first bloom, final snow  
first breath, final breath  
I am held in this  
I'll find love in this

— excerpt from nature journal of  
Campolindo High School student, 2019

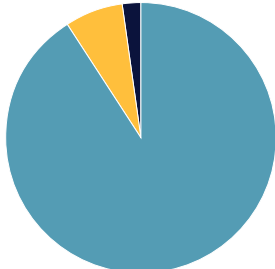
## Overall satisfaction of Conservation Collaboration Agreement program participants since its inception

I am motivated to spend more time outdoors as a result of the Conservation Collaboration Agreement program.



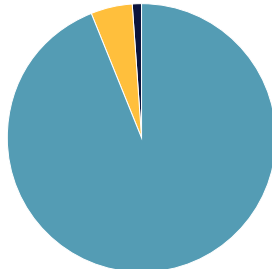
AGREE - 90%  
NEUTRAL - 9%  
DISAGREE - 1%

I learned new information about the ecology of our area (plants and animals).



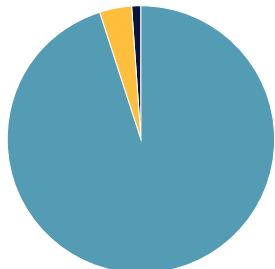
AGREE - 91%  
NEUTRAL - 7%  
DISAGREE - 2%

Did you learn more about the work of Save Mount Diablo as a result of the Conservation Collaboration Agreement program?



AGREE - 94%  
NEUTRAL - 5%  
DISAGREE - 1%

I would recommend this program to other students.



AGREE - 95%  
NEUTRAL - 4%  
DISAGREE - 1%



Support  
FINANCIALS

4/1/2019–3/31/2020  
(12-month budget cycle)

Thanks to our  
DONORS

SAVE MOUNT DIABLO EXTENDS ITS GRATITUDE TO ALL DONORS. Your generous support makes it possible to balance open space with the demands of increasing population and development pressure in our area. Together, we can preserve, defend, restore, and enjoy Mount Diablo and its foothills.



Scott Hein

Fiscal year 2019–20 results include financial information for Save Mount Diablo’s annual operating results (revenue and expenses), as well as land transaction capital items. Land acquisition includes escrow deposits for the purchase of the Smith Canyon property and conservation easement purchase from the Concord Mt. Diablo Trail Ride Association. The full programmatic purchase price expenses for these two transactions will be in future fiscal years after the closings.

Save Mount Diablo’s total revenue for April 1, 2019 to March 31, 2020 was just over \$4.7 million (including

restricted and unrestricted funding). The information in the tables below shows the importance of individual contributions: **86 percent** of our funding comes from donors like you!

Expenditures for April 1, 2019 to March 31, 2020 totaled approximately \$3 million. Program expenses other than land acquisition include stewardship projects on the numerous properties and conservation easements we own and help steward, community education and outreach, and advocacy to counter development threats. **Our cost to raise each dollar of revenue for the year was 16 cents.**

Numbers are based on unaudited April 1, 2019 to March 31, 2020 financials.

Please go to [www.savemountdiablo.org](http://www.savemountdiablo.org) to see our most recent 990 tax returns.



Al Johnson

REVENUE	4/1/2019 – 3/31/2020	
Individual Contributions	\$4,066,277	86.33%
Foundations & Grants	\$229,778	4.88%
Interest, Fees, & Other	\$114,991	2.44%
Corporate Support	\$299,347	6.36%
	\$4,710,393	100.00%

EXPENSES	4/1/2019 – 3/31/2020	
Program	\$1,644,638	54.78%
Administration & Management	\$589,656	19.64%
Fundraising	\$768,193	25.59%
	\$3,002,487	100.00%

Donations made between April 1, 2019–March 31, 2020.

Asterisks denote donors who have given for 10+ (\*), 20+ (\*\*), or 30+ (\*\*\*) consecutive years. Pluses (+) denote donors who have pledged to give for multiple years.

<b>\$250,000 &amp; Above</b> Dana & Dave Dornsife+ Carol Lane*** Nootbaar Family Fund***  <b>\$100,000–\$249,999</b> Charla Gabert & David Frane*+ Giselle Jurkanin**+ Larry & Joan Porter*  <b>\$50,000–\$99,999</b> Tom DeJonghe+ Jim & Bette Felton* Peter & Robin Frazier***+ Gordon & Donna Monroe***+  <b>\$20,000–\$49,999</b> Anonymous Burt Bassler Malcolm & Sylvia Boyce Fund at the East Bay Community Foundation** Patrick & Shirley Campbell* Joseph & Lisa Downes* David & Janice Hammond Dick & Laurie Morrison Carolyn H. Payne Jeanne Ryan Jeanne Thomas***  <b>\$10,000–\$19,999</b> Anonymous (3) Mark & Silvia Belotz** John & Julie Buckley Carolyn Butler* Paul Cortese Ronald de Golia & Diane Longshore de Golia Richard Falck*+ Ginny Ferreira+ Tamra Hege** Ann & Greg Hummel* Timothy Malte Bob & Joan Marx** Sylvia Simon* Malcolm & Casey Sproul**** Gene Underwood & Timothy Cleere Charitable Fund	Jacob Van Akkeren & Leslie Bartholic****+ John & Linda Van Heertum*** John & Gale Vocke* John F. Waggoner** Geoff & Danette Wieczynski  <b>\$5,000–\$9,999</b> Anonymous (3) Keith & Jill Alley Michael Anciaux & Wendy Wolfe* Meg Beeler & Tom von Tersch* Matt & Susie Bray Bob Campbell & Lynn Barr Tom & Cindy Crosby* Dave & Darlene DeRose David Deutscher Linda Domeier John & Tena Gallagher* Mel & Diana Haas* Liz Harvey Roberts & Bill Roberts+ Scott & Claudia Hein** Mike & Ann Koch Zena Potash & Cyrus Mancherje Frank & Regina Martens Pat McGrath & Kyra Kennedy Norman & Janet Pease Brian & Gina Pepper Allen Roberts Joe & Anne Roberts Jon & Mary Joan Sammann* Leeb Family Fund Dirk Sikkema & Linda Young** Michael & Susan Stark Martha & Steve Van Wart John & Donna Warnken-Brill  <b>\$1,000–\$4,999</b> Anonymous (9) Judy Adler*	Hanna & Gene Alger Catharine Baker May & Larry Ball Steve & Carolyn Balling* Matthew & Janice Barger Parker Barnum Marge W. Barry Stephen & Karen Beck** Geoffrey Bellenger* Steve & Pam Biggs* Walter Binswanger Guy & Denise Bjerke Les & Lynn Bloch Burt Bogardus* Paul & Sandi Bonderson Martha H. Breed Bob & Cindy Brittain* Bette Brockman & Jim Richards*** Maynard P. & Katherine Z. Buehler Foundation Fund Robert & Kim Carroll Jim & Francesca Cervantes Kristin Chambers David & Kelly Chavez John Corlett & Brooke Schwartz John E. Daniel* Lise & Carl Danner Julie Davis Jan de Vocht John S. Deeming** Leslie & Sydney Dent* Lori & Ray DePole Patricia Derickson* Steven & Elizabeth Dietsch Teresa & Doyle Dixon Craig Dore Thomas & Marilyn Draeger Phil Eager & Mimi Calter Stephen Evans & Kathleen Correia Mary Fairman* Paul & Kathy Fitzpatrick** Bruce Fogel* Nancy E. Gallagher	Launce & Isabella Gamble Joe Garaventa Garrett & Cathy Girvan* Clement & Nancy Glynn* Steve Greinetz Jean Halford*** Joyce Hambrick & Loren Bauman Jeff & Wendy Harris Dan & LeeAnn Harvey TruSource Consulting Group / Mac Heebner Dick Heron & Sue Pitsenbarger Heron* Jerry & Kathy Hicks* William & Marilyn Hoenig Margaret Holmes Bill & Lesley Hunt Michael Jameson & Hillary Hayden* Thomas & Karen Jefferson Frank & Judy Jesse Marcellus Joanes & Tania Fernandez Darryl & Beverly Johnson Sandy Johnson Irene Jones** John & Linda Judd** Robert Kieckhefer* John H. Kiefer*** Susan & Alan Kingsley John & Joyce Klassen Kathy Klein & Scott Fink** Janet R. Koupal Tom & Jenny Krause Margaret Kruse* Norman Kurihara Richard & Gayla Langlois Shirley Langlois Michael & Jane Larkin* Gladys Laston Jim & Sharon Lawrence* Tom & Pam Lee* Duane Lindner Paul Liu & Cheryl Young* Gerhard & Linda Locke Mark & Paula Lowery Carol & Bob Lowitz	Kathryn Martin & David Kurtzman** Carole Mason Doug & Sylvia Matthew Philip Matthews & Dian Heisey* Robert & MaryAnn McCleary* Kimberly & Sean McCreary John & Diane Meade* Al & Debbie Medvin* Barbara & Michael Monsler***+ Amara Morrison Mark Moskowitz & Mindy Cheng Sue & Steve Ohanian* Charles & Anne Olsen** Donald & Georg Palmer*** Christopher & Margaret Panton*** Bruce Pauly Lawrence Peirano** Perl Perlmutter Nadine Peterson & Michael Tuciarone* Read & George Phillips Brad & Trish Piatt Ariadne Prater & Mitchell Allen Arek Puzia Jonathan C. & Jane Raymond Michael & Margaret Redemer James & Gloria Redmond* Sharon & Don Ritchey** Stan & Jennifer Roe Elkin Rossell Olga Jane Rotermund Joe & Susan Ryan Bob Ryon Miquel Salmeron* Dan & Janet Schalk** Marvin & Carolyn Schick* Elaine Schroth James & Patricia Scofield** Adam & Nicki Scott Donald Seaver**	Mr. & Mrs. Alan Seidelmann* Stacey J. Shewry* Cindy & Tom Silva* Sharon Simpson Dan Smeester & Susan Gutierrez Jerry & Maren Smith Marilyn & Daniel Smith* Patricia N. Smith John & Elaine Spiecker** Lori Steere Gary & Jana Stein Brian Strom Richard & Linda Stubblefield Dianna Sutherland Curtis & Christine Swanson* John & Debbie Swearingen Joe Tatum Stephen & Carlene Thomas* Wendy Thomas Greg & Cathy Tibbles Michael & Janice Traynor Robert & Ginger Traynor Kim Trupiano Kathryn van Steyn Sandi & Jim Vandersloot Frank & Barbara Varenchik** Jean Vieth & Jan Diepersloot* John Waterbury* Patricia Weeden Jerry Weintraub & Melody Howe Weintraub* Judy Whelan & Robert M. Simmons* Kitty Whiteside Martha Whittaker** Bernard & Lonna Wolf Thomas M. Wood Stephanie Woods* Earl, Marlys, & Seth Worden** Zaitlin-Nienberg Family Fund
---	---	---	--	--	---



***\$500–\$999***

Anonymous (11)	John Gingrich & Christine Currie-Gingrich	Hal Moore & Denise Belt
Seth Adams	Mark Gooch	Jay & Jasmin Mumford
Alison & Peter Hill	Robert & Polly Gould*	Janet O'Connell-Mangham*
Dave Allsop	Mark & Leslie Graham	David Ogden & Sandy Biagi**
Ralph & Jane Anthony	Gary & Dawn Guglielmino*	Phil & Rachele O'Loane
Joe Appleby	John Harris & Lisa Palermo**	Ray & Monica Panek
Carol Baird & Alan Harper	Christie Hastings*	Ken & Ellen Pearl
Lynn & Jason Baskett	Januth Hayashi*	Sylvia Perfetto
David & Janette Beatty	Warren & Tori Heffelfinger	Mary & Ron Petersen
Robert Becker	Kevin & Elaine Hennessy	David Peterson
Darach Beirne	Mary P. Hicks	Cal Podrid
Jeff & Barbara Bennett	Harlan & Gayl Hirschfeld**	Paul Popenoe
Janet A. Berckefeldt	William & Sally Holliday	Chris Reder
Sandra Berggren	Don & Ann Hughes**	David Richards
Steve & Patty Bort*	Nambi & Vidya Iyengar	Helen & Garrett Romain
Jerry & Carolyn Britten*	J.L. and Margaret Wiegert Jacobs Family Charitable Fund	Kathleen Roth & Rosalie Roth
Diane C. Brown**	Michelle Brown & Chad Jenkins	Ethan & Gretchen Salter
Lori Brown	Cathryn Jew	David & Sally Sanger
Richard Joel Brown	Anne & Steve Jones	Sally Scholl*
Ron & Sharon Brown**	Dave & Lois Kail**	Kathy Simons & Jeff Gustafik
Bruce Brownell	Patricia Keane	Arlene & Matthew Sirott
Beth Burnside	Joyce Kelly*	Dana & Marti Sketchley*
Sally Cahill	Jim & Janet Kennedy	William & Martha Slavin*
Arthur Richard Carter*	Todd & Tessa Keys	Robert & Peggy Slyker*
Michael Cass	Patricia E. Klahn***	David & Andrea Smethurst
Kirsten & Steve Cherry	Vera Knowles	Richard & Sandra Smith***
Charles Clancy	Therese Konz	Ron & Judy Smith**
Colin & Mila Coffey	John Kopchik	Sam & Susan Sperry*
Jay & Cynthia Cohan	Joan Kunz*	Johannes & Michaela Stahl*
Richard Connett	Beverly Lane*	Corby & Heather Stead
Bill Cosden	Terrance & Anne Langley	Brett Stewart & Meagen Leary
Peter W. Dahling & Caroline Davis*	Joan & Gary Lawrence*	Kevin Sullivan
John & Charlice Danielsén	Edward & Carol Lee*	John & Elouise Sutter
Darrell Davidson	Marston & Anne Leigh*	Will & Kate Taylor
Paula B. Deen	Marc & Patti Lewis*	Tom & Sue Terrill
Jennell & Franklin Dill	Peter & Dawn Lezak	Patricia M. Thomas**
Elisa Dowd & Douglas Graver	Tom Logue & Heidi Bosselman*	Richard H. & Kathleen C.Thompson**
Roger & Emily Ehm	Kristin Marczak	Juli Todd
James Everett	Jim & Michelle McAdams	Christine Tomacci & Eric Legare
Matt Faber	Brian McAndrews	Benson Tongue
Martha & Richard Fateman*	Diane McClarty-Miller	Tom & Lynn Trowbridge**
Gennaro "Gus" & Joan "Sugar" Filice	David McCully & Nancy Bachmann	Paul Vetter
Barbara Florin	Geoffrey & Valerie E. Meredith*	Bill & Stacy Walter*
Sid & Linda Fluhrer	Paul & Nancy Meyerhofer	Barbara Walters & Kathleen Arnold*
Kevin Fong*	Steven & Sally Meyers	Karen Weichert
Jack Fritschi	Bob & Carolyn Mills	Janet G. Welter

Robert & Karen Wetherell***
Sunil & Susan Wijeyesekera
Peg & Steve Wilcox
Ray & Liz Witbeck
Terry & Leslie Wyatt**
Yanowitz Family Philanthropic Fund of The Jewish Community Foundation of the East Bay

Ron & Rebecca Yee\*

***\$250–\$499***

Anonymous (7)
Judy Abrams
Patricia J. Adamcek
Barbara J. Ageno
Jamerson & Virginia Allen
Clyde & Lois Ambacher
Philip Angelides
Trudy & Bill Ausfahl
Roger Michael Avery
Reed Baird*
Alise & John Bamforth
Barbara & Mark Garman
James Bartlett & Mimi Foord
Terry & Kim Bass
Jack & Shelley Bay
Caedmon & Kathryn Bear
Paola Benassi
Claude & Carol Benedix***
Linda & Ed Best*
Chuck & Jeanne Bettencourt*
Polly Boissevain & Leslie Townsend*
Corwin & Margaret Booth
Karen Born
Kristine & Jeff Bortz
Elizabeth Bowles
Phil Bowman
Glen & Candace Bradley
Brent Briggs
Ken & Janet Brown
Stephen Buffi & Anne Waters*
John & Bonnie Bunker*
Robert & Gail Burnett
Merrick Bush
Steven Butterfield
Robert & Janet Canning*
Tim & Carolyn Carlson

Charles Clem***
Ted & Boonsuay Clement
Don & Diane Clements
Patricia E. Coffey
Joan Cole
Susan D'Alcamo
Ellen Daniell & David Gelfand
Kathy Davies
Imke De Pater & William Van Breugel*
Stephanie Denman
Patty Deutsche
Graham Deutscher
Todd Deutscher
Jim & Juanita Dickson
Rashmi Dixit
Jim & Andrea Doehrman
Duane & Linda Duchscherer
Michael & Becky Egan
Stephen Elliott & Kim Risedorph
Diana Felton
John & Jean Fiske
Lon Freeman & Justine Owen
Donald & Cathryn Freitas
Thomas & Gail Frost
Dan & Nancy Galvin
Karl & Kathleen Geier*
Sue Gibbons
Terry & Glenn Gonzalez*
Katy Grant
Greg & Lois Grassi
Tim & Tammy Grayson
Richard G. Gustafson**
Charlie & Ginger Guthrie*
Thomas Hagler & Alice Stauffer*
Frede Hammes*
Todd Hancock & Suzy Kisch
Tom Hansen
Hannelore Harwood
Ron & Ann Hendel*
Dan & Carol Henry***
Alison Hill*
Robert & Barbara Hill*
Eric & Debbie Hinzal**
Gene & Jeannine Hummel
Noel & Laura Hurd
Jay & Jane Jennings*
Jette Jensen

Gail Jordan***
Pamela & Mark Kan
Steve Kaplan
Richard Kawin*
Kathy & Thomas Kelley
Bradford Kelly
B.J. & Veronika Kerekes**
Kristine Klotzbach
Gerald & Rosette Koch**
John & Diane Kopchik*
Doug Lacey & Cindy Silvani-Lacey*
Eric & Wendy Lacy
Wayne Lawson*
John L. Lineweaver
David Loeb**
Scott & Beth Macy
James & Rene Maher
Barbara Mahler*
Christophe & Brigitte Majewski
Kathleen & Richard Marshall*
Fred Massell & Linda Maxon
David Matson
Mark & Helene McElyea
Mel McKay
Bill McNally
Don & Betty Medwedeff*
Virginia Meserole*
Jeffrey Miller
Ray & Irene Milne
Alan Mitchell
James & Sharon Moore*
Robert Moore
Geoff & Karen Morris
Joyce H. Munson***
Pamela Ann Murray
Sharon & John Nasstrom
Hoang-Nam Nguyen
John & Ann Noll*
Joanne Ottone & Randy Hogan
Anne-Jette James Oxenburgh*
Carol Pacht
Vera Packard
Ruth Ann & Scott Pearsons
Scott & Elizabeth Perkins*
Diane Petersen
Sherry Piatt
Geoff Pollard
Roy Pollock
Dr. Jorgen Randrup

Michelle & Gordon Reese
Daniel & Suzanne Renaghan
Jean & Micheline Rennette
Charles & Linda Rickenbacher**
Bill & Lana Rocha*
Meredith Rosen
Alan & Sue Rosenberg
Antonio & Theresa Ruscitti*
Mary Salas
Roger & Jeane Samuelsen*
Elaine & Lawrence Santone
Kathy & Earl Sawyer**
Jerry Saylor*
John & Jacqui Schaefer*
Anthony & Sandra D. Schilling***
Dick Schneider
Jeff & Jacqueline Schubert*
Eugene & Lily Schulting
Michael & Ann Scott
Nancy Scott
Bill Sederowitz & Callie Gilbert
Janine Senior
Carlo & Margareta Sequin*
David R. Sharp
Nicholas & Christine Sharrock
Tyler & Rachel Sheldon
Judith Sherwood
Dave & Teri Shikany
Richard B. Silbert*
Michael & Catherine Simpson
Matt & Mary Smith
Rebecca Smith
Erik & Michelle Sommargren
Barney & Nancy Speckman*
Nancy Spiecker
David F. Sroka
Frank & Barbara Strehlitz**
Lora & Guy Swanger
Tanner & Amy Tingey
Nancy N. Topp
Laura Tow*
Christian Truebridge
Greta Vollmer
Roy Pollock
David & Laura Waal

Michael & Joyce Wahlig***
Sharon Walters*
Alan Weinstein
Bob & Lisa Weiss
Pete Weisser*
Jeff & Sally Welborn
Elspeth Wells
Nancy Wenninger
James & Benedicta Werle
Mark D. Whatley & Danuta Zaroda
Mona & Bob Whitley*


<b><i>\$100–\$249</i></b>
Anonymous (30)
Cynthia Adkisson
Sherla Alberola
Thomas & Annette Alborg*
Janine Alden
Quentin & Nancy Alexander*
Mary Terry Allen
Sarah Allen
Peter Alley & Carolyn Strange
Tony & Lena Amor*

Marilyn Ayers*
Kenneth & Linda Back*
Bruce Baer
David M. Baer***
Travis Baker
James & Mary Ballard**
Juan Banales
Christine Banducci
Mr. and Mrs. Charles Banfield Fund
Barbara Goldsmith & Betty Lout Moglen
Larry Barclay & Christine Imrie-Barclay

Teresa & John Bergum
Bennett Berke & Lorna Wallace
Edwin & Diane Bernbaum
Suzan & Robert Best
Mike Biddle & Lissa Richardson-Biddle
Angela & Anthony Bilich
Arthur Binder
Tom & Sharon Bjornson
Andrea Blachman
Laurie Black
Barbara G. Blalock***

Jeanne Boyd**
Roy & Karen Brandreth
Lynn & Butch Brear**
Alexander Brennen**
Eric Brink & Gayle Vassar
Daniel & Jeanne Brown
Janet & John Bruno
Kevin Bryant
Joe Buhowsky
Diane Burgis
Anne Burke
Madge Burton
Mary Buscaglia

# Monthly Donor Circle



This special circle of donors helps provide steady, reliable support by donating monthly. Their generosity ensures Save Mount Diablo can continue to preserve, defend, and restore Diablo's wild lands.

Anonymous (3)	Richard Faigle	Charles & Lee	Adam & Nicki Scott
John Allen	Lawrence E. Ferri	McCaffree	Donald Seaver
Kenneth & Linda Back	Allan Francke	Judith & Lindsay McCall	Lawrence & Leona Seidell
Bruce Baer	Terry & Glenn Gonzalez	John & Diane Meade	David R. Sharp
Steve & Carolyn Balling	Mark Gooch	Jeffrey Miller	Jennifer Sherwood
Christine Banducci	Katy Grant	Pamela Ann Murray	Stacey J. Shewry
Marge W. Barry	Scott & Claudia Hein	Joanne Ottone & Randy Hogan	Richard B. Silbert
Robert Becker	Robert & Barbara Hill	Ruth Ann & Scott Pearsons	Michael & Catherine Simpson
Paola Benassi	Al Johnson	Sherry Piatt	Dianna Sutherland
Sandra Berggren	Steve Kaplan	Geoff Pollard	Jillian Urhausen
Loretta Boyce	Margaret Kruse	Judith A. Robbins	Jean Vieth & Jan Diepersloot
Glen & Candace Bradley	H. David Kwinter	Inge Robertson	John F. Waggoner
Marianne Callahan	Ray Lamanno	Howard Royer	Julian & Elsa Waller
Robert & Kim Carroll	Marc & Patti Lewis	Joe & Susan Ryan	Bill & Stacy Walter
Richard Connett	Karli Maeda	Mary Salas	Jeff & Sally Welborn
Jan de Vocht	Kathryn Martin & David Kurtzman	John & Jacqui Schaefer	Stephanie Woods
Elisa Dowd & Douglas Graver	Carole Mason	Bill Schneider	
Janet Evans	Doug & Sylvia Matthew		

Kristen Wick**
Doug Wilson
Peter & Amelia Wilson**
Amy & Tom Worth
Diane E. Wren
Brett & Francesca Wright
Chris Wright
Kathleen & Robert Yates
James Yurchenco & Amy Lauterbach

Erik Michael Anciaux
Andrew & Ilene Scharlach
Paul & Hanako Andrews
Anduri Family Charitable Fund*
John E. Antczak
Joan S. Armstrong**
Newell & Janis Arnerich
Lyndon & Joan Arscott*
Jean Autrey*


Patricia Barker
Sara Barth
Jo Ann Barton*
Robert Barton
Dave & Wendy Bauer
Barbara A. Baxter
Carol Baxter*
Jody & George Benkly
Grant Benson
Joel Berger*

Dave Bliss
Jacques, Jan, & Mary Lou Blumer
Bette Boatmun
Cynthia & David Bogolub
Don Bonney
Marielle Boortz
Mary & John Boss
Adriane & Barry Bosworth*
Chip Bouril*

Elizabeth Crane*
Jacqueline Crist
Craig Cristina
Tina Curiel
Randall & Jacqueline Curtis*
Stephanie Dannebaum
Cindy Darling
Dinah L. Darvas
Albert & Natalie Davis
Richard Davis & Sandra Jones**



Marilyn Day*	Susan Julian Gates	Sandra J. Greenwood	Richard J. Holden	Al Johnson	Marjorie Kirk	Willy & Susan Mautner	Don & Debbie Noyes	Cavett Robert	Fred Smith*	Julian & Elsa Waller**	Junell Ancheta
Mark & Elaine Day	Marilou C. Gay	Diane Griffiths	Lydia Holmes	Douglas Jones	Joseph Kohen	Nelson & Mika Max	Lindsey Noyes	Gael Rodgers	Roger Smith	Susan Walls	Eric & Sally Anderson
Lauren de Vore & Paul Jackson	Carol Gegner	Julie Grisham & Kenneth Winters	Ann Holzhueter*	Jacqueline Jones*	George & Edith Kohut	Gary & Ann McBride	Bob & Kris Nunn	Juanita & Terres Ronneberg	Tom & Stephanie Smith	Pamela & Richard Walsh	Leslie Anderson*
Nancy & Charlie DeSchane	Mark & Barbara Geiser**	Christopher W. Grow	Ferol-Jeanne Hooper Brown	Tom & Margaret Jones	Gregg & Anne Korbin	Molly McCabe & Brian Gagnon	John Nygard**	Dee Rosario	Michele & Karl Snover	Dan Wanket	Selina & Brian Anderson
Connie M. Diernisse	Aaron & Jennifer George*	Greg Hahn & Wendy Cole	Elizabeth Hoople*	Neil Jubaili & Lisa Argue	Robert & Lynda Korsan*	Judith & Lindsay McCall	Vickie & Matt Nyland	Jim Rosenau	Bob Solotar	Marcy & Jim Warner	Joe Antos
Stephanie & Thomas DiPalma*	Carol Gerich*	Robert Hahn	Chris Hovey	Julien & Marilyn Hansen	Wayne Korsinen	Kristina McCann	John & Kathleen Odne	Jay & June Rosenthal*	Aline Soules	Mashuri & Rahima Apparsamy	Azhaguthasan
Scott & Marcy Dixon	Grant Gerlach	Liede-Marie Haitsma	Peggie Howell	Carl June	Jesse & Sharon Krider**	Christopher McClure	Kendall & Monica Oei	Howard Royer	Ava & Suzanne Sparacio	Sarah Watson Keller	Alan & Helen Appleford**
Gene & Denise Dolan*	David & Betsy Gifford	Marilyn Halberg	Lisa Hubbart*	Cliffton Kalibjian	Steve & Amy Krochmal	Jack McCowan	John & Dianne Ollila*	Ray Rubin & Ana Almaraz	Richard Sproul**	Sandra J. Watson	Sharon Ardoin
Francine Donner	Ellen Gilman & James Comerford	Mike & Mary Handel*	George D. Huertas	Frederick Kamp	Ray Lamanno	Alisdair & Jenny McGregor	The Omidyar Group	Mary C. Russell*	Ann Stevens	The Wednesday Walkers	Vivian G. Armstrong
James Dow	John Ginochio*	Dan & Tracy Harrelson	Randy Huey	Dick & Tina Kauffman**	Terry & Lisa Lane	Irene McKeever	Lorraine Osborn	Rob & Trude Rutan	Jeannie R. Sternberg	David & Elaine Wegenka	Stephen S. Arnon
Philip Dowling & Erilda Satti*	Virginia H. Girzadas	Morissa Harris*	Carol & Bert Hughes	Robin M. Keefe	Laurie & Jeff Langford	Pamela McKulla	Nancy & Clara Painter	Marilyn Sampair	Mark Stevens	Helen Wehmeyer**	Roger & Jan Artley
Patricia Draper		Kate Hart & Craig Johns	Michael Hughes	William & Kathleen Kellar	Carol P. LaPlant	Mark McLaren & Nancy Norland**	Drs. Aurelia & Victor Palciauskas	Katherine Sanders	Mary Alice Stadum*	Peter Weiler**	Julie Aumock

Patricia Draper	<div> <div>  <div> <div>Scott Hein</div> </div> </div> <div> <div>Diablo Legacy Circle</div> </div> </div> <div> <p>Making a donation is generous. <i><b>Making a long-term gift is an act beyond measure.</b></i> We give special thanks to our Diablo Legacy Circle members, those who have included Save Mount Diablo in their estate planning. Their generosity ensures Mount Diablo, its foothills, and its wildlife will be preserved for generations to come.</p> </div>										
Jill & Bruce Dresser											
Tim & Dalia Durant*											
Terri & Bradley Dyer											
Karin Eames											
Roger & Dianne Ehlers											
Margaret & Robert Elliott											
David Epley											
Chip & Susan Erickson											
William Espey											
Janet Evans											
Robin Evitts	Anonymous (20)	Bob & Cindy Brittain	Carol Lane	Bob Ryon	Manfred & Bernice Lindner*	John Michels*	Liz Piatt**	Earle & Judy Schremp	Patricia Thibos	<div> <div>\$35–\$99</div> </div>	
Stephen Fallon	Tracy Achelis & Vincent Sciortino	Carolyn Butler	Shirley Langlois	Gary & Pam Schroeder	Katie Lopez & Eric Riddle	Dr. Linda M. Miller*	John Pidoli	Stewart & Sherry Proctor	Herbert & Marlene Thier		
Lawrence E. Ferri**	Barbara J. Ageno	Kathy Catanho	Randi & Herb Long	Mady Schubarth	Shirlee Loret	Ann Moldenschartd	Lokke Pierce	Marje & Stephan Schuetze-Coburn	Gary & Carol Thompson	Anonymous (24)	Anne & Dan Bookin
Sylvia & David Finger	Carol Alderdice	Suzanne & Rick Cordes	Richard & Susan Mason	Robert Sieben, M.D.	Gloria Lotten	Carl Monismith	Jordan & Noreen Pitta	Marje & Stephan Schuetze-Coburn	Lee & Sandra Thompson	Chris Abess	Sharon Borglin
Michael Fischer & Cheryl Farr	Hanna & Gene Alger	Joan Duffield & Andy Cuellar, Jr.	Philip Matthews & Dian Heisey	Richard B. Silbert	Janet & Neville Luhmann*	Tim & Roberta Montgomery**	Noah Dixon Pollaczek	Barbara & Ron Schonfeld	Lorna & Mark Thomson	Lori & Mike Adams	John Bouyea
Sheilah & Harry Fish	Susan & Robert Andrews	Richard Falck	Dick & Laurie Morrison	Robert Sieben, M.D.	Janet & Neville Luhmann*	Jeanne Thomas	John Potocki	Paul & Nancy Schorr*	Barbara Tillinghast	Robert & Constance Adelson	Martin Bovill
Jane Fisher	Jim & Bette Felton	Janet Noble & Brian Aldrich	Deborah Toll White	Richard & Sandra Smith	Vladan & Margita Lunacek*	Deborah Toller	Allan & Kit Prager***	Bernice Schremp	Eric & Chris Tjensvold	Malena Adzich	Beth Branthaver
Donna Fogel***	Peter & Robin Frazier	Steve & Kim O'Brien	Janet Noble & Brian Aldrich	Richard & Sandra Smith	Grace MacNeill**	Deborah Toller	Donna Preece*	Stephen Schwarcz & Wendy McPherson	Tom & Jill Toffoli*	Maria Ageev	Richard & Christine Braunlich
Ken & Carol Fowler	Kenneth & Linda Back	Sue & Steve Ohanian	Janet Noble & Brian Aldrich	Jeanne Thomas	Karli Maeda	Joan C. Morris	Erika Pringsheim-Moore	Deborah & Jonathan Scott	Marge Tovani	Alice Agogino & Dale Gieringer	Anne Bremer
Paul, Lisa, & Kelsey Francis*	Burt Bassler	Sue & Steve Ohanian	Janet Noble & Brian Aldrich	Deborah Toll White	Mike Hummel	Adrienne Morrison	Stewart & Sherry Proctor	Deborah & Jonathan Scott	Rose & Ron Towery	Bea Agronow	Kay Brezinsky
Bruce & Ellen Fraser	Meg Beeler & Tom von Tersch	Sue & Steve Ohanian	Janet Noble & Brian Aldrich	Deborah Toll White	Richard Ingalls*	Joy Motts	Ron & Vivian Proto	Deborah & Jonathan Scott	Tom & Jill Toffoli*	Kimberly & Terick Albert	Martha Broad
Charles & Arleen Fraser**	Betty Paul	Sue & Steve Ohanian	Janet Noble & Brian Aldrich	Deborah Toll White	Antonio & Lisa Insigni	Cailin Mullins	Larry Prud'homme	Deborah & Jonathan Scott	Margie Tovan	Mark & Melanie Albertin***	Ethan S. Brookes
Michael & Shelley Frazier	Bob Penny	Sue & Steve Ohanian	Janet Noble & Brian Aldrich	Deborah Toll White	Marc & Karen Irish	Joseph Murphy	Larry Prud'homme	Deborah & Jonathan Scott	Rose & Ron Towery	Glenn Alex	Amy Brotman
Donald & Neysa de Fremery***	Nicola Place & Chris Beeson	Sue & Steve Ohanian	Janet Noble & Brian Aldrich	Deborah Toll White	Nick & Patsy Jabuka	Gail & Jim Murray	Larry Prud'homme	Deborah & Jonathan Scott	Ted Trambly*	Patricia Allard	Ann Brown
Pamela Freunde-Striplen	Larry & Joan Porter	Sue & Steve Ohanian	Janet Noble & Brian Aldrich	Deborah Toll White	Steve & Kim O'Brien	Eric Nagle	Larry Prud'homme	Deborah & Jonathan Scott	Dana & Miki Tsubota	Douglas & Claudia Allen	Joanne & Richard Brown
Robert & Leslee Frey	Jan Richardson	Sue & Steve Ohanian	Janet Noble & Brian Aldrich	Deborah Toll White	Keith & Jane Kelson	Thomas J. Nagle	Larry Prud'homme	Deborah & Jonathan Scott	John & Susan Tullis***	Joan M. Allen*	Paul & Kendra Brown
Frick Family Charitable Fund	Suzanne D'Arcy	Sue & Steve Ohanian	Janet Noble & Brian Aldrich	Deborah Toll White	Maya Kennedy*	Ricardo & Olivia Narvaez	Larry Prud'homme	Deborah & Jonathan Scott	Mary M. Ulrich*	John Allen	Robert D. Brown
Alex & Deborah Friedman***		Sue & Steve Ohanian	Janet Noble & Brian Aldrich	Deborah Toll White	Jerry & Lola Kent*	Ardell Nelson	Larry Prud'homme	Deborah & Jonathan Scott	Victor Unsinn & Karen Savelich	Linda Allen	Tom Brown
Pamela K. Fulmer		Sue & Steve Ohanian	Janet Noble & Brian Aldrich	Deborah Toll White	Paul & Holly Kersis	Theron Nelson***	Larry Prud'homme	Deborah & Jonathan Scott	Mark Uterbach	Diane & Daniel Alspaugh*	Erik Bruce*
David Fung		Sue & Steve Ohanian	Janet Noble & Brian Aldrich	Deborah Toll White	Marjorie & Donald Ketzler	Barry A. Nesmith*	Larry Prud'homme	Deborah & Jonathan Scott	Mark D. Valentine	Carol Altwarg	Dennise Burgess*
Gwen M. Gallagher		Sue & Steve Ohanian	Janet Noble & Brian Aldrich	Deborah Toll White	Ann Marie Khadalia	Robert Neumann	Larry Prud'homme	Deborah & Jonathan Scott	Chris Valle-Riestra		
Leslie & Virginia Gallagher***		Sue & Steve Ohanian	Janet Noble & Brian Aldrich	Deborah Toll White	Jan & Scott Kilner	Susan Newcomb	Larry Prud'homme	Deborah & Jonathan Scott	Clark Vandell		
Adrienne Galvin*		Sue & Steve Ohanian	Janet Noble & Brian Aldrich	Deborah Toll White	Lauren Kindorf	Bill & Holly Newman	Larry Prud'homme	Deborah & Jonathan Scott	Michelle VerKuilen		
John Game		Sue & Steve Ohanian	Janet Noble & Brian Aldrich	Deborah Toll White	Marian King	David & Xiuhua Nicholas*	Larry Prud'homme	Deborah & Jonathan Scott	Dana Slauson*		
Valerie Gardner		Sue & Steve Ohanian	Janet Noble & Brian Aldrich	Deborah Toll White	Elizabeth King-Sloan***	Henry Nigro & Lucinda Henderson-Nigro*	Larry Prud'homme	Deborah & Jonathan Scott	Beth & Mathew Smith		
		Sue & Steve Ohanian	Janet Noble & Brian Aldrich	Deborah Toll White	Timothy Kingston	James & Leanne Noe	Larry Prud'homme	Deborah & Jonathan Scott	David Smith & Theresa Blair**		
		Sue & Steve Ohanian	Janet Noble & Brian Aldrich	Deborah Toll White	Christopher Kinsel	Thomas Nootbaar*	Larry Prud'homme	Deborah & Jonathan Scott			
		Sue & Steve Ohanian	Janet Noble & Brian Aldrich	Deborah Toll White		Richard & Carol Northing**	Larry Prud'homme	Deborah & Jonathan Scott			
		Sue & Steve Ohanian	Janet Noble & Brian Aldrich	Deborah Toll White		Ashley Masen	Larry Prud'homme	Deborah & Jonathan Scott			







Eduardo Guaracha	Anastasia Mixcoatl-Martinez	Tim Ory & Diana Minnick	Kathleen & James Romeo	Donald So	Madeline Vandevendor
Grant Guerra	Marla Miyashiro	Kathy O'Toole & Herb Yonge	Jessica Ross	Ann Spaulding	Edmundo Vitocruz
Carolyn Gwynn	Renee Morgan	Carly Clements Owens	Jackie Russell	Daniel Spelce	Barbara Walden
Lily Hackett	Kay Mungaray	Jim Paulsen	Amy Saenz	Ernest & Marlene Sponzilli*	Stephen P. Walker
Beth M. Hansen	Catherine Murphy*	Andrea Persinger	Kyra Santa Cruz	Nicolas Stathakos	Matthew Ware
Dede Heck	James Nasman	Jane H. Peterson*	Julie A. Satchel	Sue & D. Stewart	Margaret Warnke**
Julie Hendrickson	Helen E. Newman	Alexa Pritchard	Bill Schneider	Emily Stonehouse	D. Wayne & Rosie White
Anita Hiebert	Brad Newsham	Judy Pueringer*	James W. Scott	Jurgen & Madeline Strasser	Stephen & Marjory Wilcox
Kayla Hiltermann	Chris Niewiarowski	Tom & Carol Raney	Mabel Segovia	Jeffrey & Sue Supran	Jayne Wilson
Kimi Horner	Jean Nobbe	Conley & Gayle Roaseau	Karen Shackleton	Davis Teselle	Don Winslow
Carol & Brad Hoy	Carlyn S. Obringer	Enrique Rodriguez	Patricia Sharaf	Tracy Thatcher	Kenji Yamada
Carlton Hughes	Yoko Ogawa	Elinor Rogers	Rebecca Simik	Mike Thomas	Javier Zaldivar
Dave Hughes	Corina Orias	Sue Rohlicek	Carolyn Smith	Courtney Uy	Borys Zilbermints
Elaine & Phred Jackson					
Annie Jacobsen					
Rochelle Jorgenson*					

Geraldine Judt\*

Susan E. Kaar\*

Tiffany Kim

Pat Kirscher

Ross Kitchin

Michael & Anita Korenstein

David & Carol Kratky

Vera-Ellen Lanaro

Sofia Lavdiotis

Pamela Leibring

David J. Lenehan\*\*

Idelle S. Lipman

Larry Loomer

Robert & Beverly Loomis

Jose Lorenzana

Robert & Erica Lozano

Lee Lucas

Roxana Lucero

Nathan & Suzanne Lutz

Mary Kathryn Lynch

Janet A. Mangini

Monica March

Toby Matthies

Miles & Inga Maynard

Charles & Lee McCaffree

Bill McCloskey

Donna McConnell

Rose E. McKinnon

Judith McKissack

Jack & Cindy McMurry

Shirley McPheeters\*

Judy Meegan

Molly Meisenheimer

David Paul Miller

Patricia Jean Minor

Kensey & Dan Mires

Fred Mitlitsky & Susan Bothwell\*



A Johnson

## Young Friends

Our young friends (students and people under the age of 21) are stepping up to become a part of the next generation of future conservationists and activists who will help preserve Diablo's natural lands for years to come.

Jasmine Aguilar	Esperanza Diaz	Maddie House	Karla Medina	Alendra Salazar
Rosemary Alcalà	Garrett Dunn	Anya Houston	Sivani Merlo	Jack Saroni
Carlos Alonso	Laura Durski	Kyle Humphreys	Alyssa Millhouse	Wyatt Scheberies
Bryan Altuzar	Mariah Eagle	Zoe Hunter	Eliana Murdock	Ethan Schloemer
Christiana Aranda	George Ekmekjian	Cyrus Ignacio	Magdalena Muro	Meagan Scudder
Tiyana Arnold	Alexander Farner	Cami Ingersoll	Eliana Murphy	Keichi Serrano
Veronica Avila	Jovany Fernandez	Patrick Jacobson	Daniel Neira	Bennett Silberman
Andrew Babson	Catherine Flores	McKenzie Kahn	Tsubasce Nicholas Lin	Aryka Silva-Arnold
Travis Baker	Jonathan Fordelon	Elena Karver	Lucas Nomura	Branden Siscar
Mariah Barraza	Gannon Gallo	Carson King	Leslie Ovalle	Annika Sonne
Sophia Benavides	Esmeralda Galvez	Cami Kutchai	Haley Painter	Ava Spavacio
Alex Benedian	Alexjandra Garcia-Acosta	Noori Kwon	Lavina Pale	John Stepp
Matija Benko	Joey Garner	Kat Lee	Samantha Pantangco	Jeff Stone
Cynthia Bobadilla	Erin Garrity	Malia Lekea-Tiumalu	Jim Peirce	Keith Stone
Sienna Boone	Evet Gil	Papalagi	Kaitlyn Pena	Sam Storrs
Amanda Burt	Isabelle Gill	Kelsey Levante	Nicholas Peña-Austin	Peyton Tallarico
Gianna Caruso	Austyn Guevara	Mifay Liu	Isabelle Porcella	Tiwo Truane
Vikas Chhabras	Leonardo Gutierrez	Christopher Lobron	Andrew Price	Jaqueline Trujillo
Olivia Clizbe	Naveli Gutierrez	Angelina Louie	Alondra Ramirez	Yi Truong
Reese Connelly	Noah Hamann	Mallory Louis	Julian Ramirez	Isabelle Tsai
Catherine Cortright	Axel Harkavy	Mason Loyet	Scanett Reicher	Anastasia Vayner
Toni Cowen	Laila Harmon	Michelle Lozano	Ashley Reitz	Christian Wade
James Crawford	Nalani Harmon	Samuel Lum	Aiden Roake	James Welden
Dylan Cronin	Benjamin Hernandez	Vaughn Luthringer	Patrisia Roblero	Georgina Williams
Rex Curtiss	Gisselle Hernandez	Princess Macias	Mike Rodriguez	Charlie Woidat
Patricia Davila Gil	Lilli Heutmaker	Anna Maguire	Paula Rodriguez	Yun-Yuk Wong
Asjah Davis	Luke Hickey	Lucy Maguire	Carson Rossi	Jake Wykle
Lexia Deas	Carter Hiett	Maneli Malboubi	Nicole Ruffalo	Alexandria Yokomizo
Delaney DeMarco	Lauren Hlavac	Dominic Marble	Alyssa Runckel	Everett Zellmer
Helana Devine	Alicia Hober	Abigail Mario-Rojas	Kelly Ryane	
Alexandra Diaz		Justin Medeiros		

### CORPORATIONS & PARTNERS

#### \$20,000 & Above

Anonymous

The CLOROX Company

Diablo Analytical, Inc.

Google

Grizzly Peak Cyclists

LSA Associates, Inc.

Matson Logistics

McCorduck Properties, LLC

Mt. Diablo Audubon Society

PG&E

Plumbers & Steamfitters UA Local 159

Sprinkler Fitters Local 483

SummerHill Homes

Target

Valley Spokesmen Bicycle Club

#### \$10,000–\$19,999

Cedar Wealth Management

Chevron

Deutscher Properties Corporation

Marathon Petroleum Corporation

Mt. Diablo Resource Recovery, a Garaventa Company

KB Home

Jeanne Thomas

Visit Concord

#### \$5,000–\$9,999

Appleby Cleaning and Restoration

Beets Hospitality Group

Carlson, Barbee & Gibson, Inc.

CASS, Inc.

Diamond Construction, Inc.

East Bay Regional Park District

ENGEO, Inc.

IBEW Local Union 302

Lennar/Five Point Holdings LLC

Miller Starr Regalia

Summit Ranch / Bob & Joan Marx

Wendel, Rosen, Black & Dean LLP

#### \$1,000–\$4,999

Aetna Inc.

America's Best Local Charities

Blue City Holding, LLC

Brazen Racing

Car Donation Services, Inc.

Charles Schwab Foundation

#### \$500–\$999

Apple Inc.

Facebook

Kiwanis Club of Walnut Creek

PayPal

Redwood Painting Company

The Western Section of the Wildlife Society

#### \$250–\$499

Conflo Services, Inc.

The Doctors Company

Encina Bicycle Center Walnut Creek

Genentech, Inc.

Hewlett Packard Enterprise

Mount Diablo Interpretative Association

Norcal Sound, Inc

Orinda Hiking Club

Painting with a Twist

Sons in Retirement

#### \$100–\$249

A Loveable Feast

Ameriprise Financial, Inc.

Autodesk Foundation

BlackRock

California State University, East Bay

Contra Costa Hills Club

Diablo Bonsai Club

FHLBanks

Gap Inc

Lam Research

Lawrence Livermore National Laboratory

McKesson Corporation

Montelindo Garden Club

Orinda Garden Club

Thrivent Financial

#### \$1–\$99

Bright Funds

Campolindo High School

Casey Cannon Graphic Design

AVID Eastern Division

Hopelab

HP Inc

Kaiser Permanente

Oracle Corporation

Robert Half

### FOUNDATIONS

#### \$50,000 & Above

Elizabeth Vinton Sanderson Foundation

Giles W. and Elise G. Mead Foundation

#### \$20,000–\$49,999

HEDCO Foundation

Rose Foundation for Communities and the Environment

William G. Gilmore Foundation

William H. Donner Foundation

#### \$10,000–\$19,999

Barbara Louie Fund at the East Bay Community Foundation

Union Bank

#### \$5,000–\$9,999

B.T. Rocca, Jr. Fund

The Barth Foundation

Hulburd Family Fund

Nathan M. Ohrbach Foundation

The R. Roland Smith Family Foundation—Todd & Beth Smith

William A. Kerr Foundation

#### \$1,000–\$4,999

Chateau Seaview Charitable Fund at the East Bay Community Foundation

George W. Davis Fund

Lescure Foundation

Lions Club of Rossmoor Foundation

#### Under \$1,000

AmazonSmile Foundation

Clayton Community Library Foundation

Clif Bar & Company

### ESTATES & TRUSTS

Anonymous

Charles Gresham

Edgar Mendelsohn

### IN-KIND GIFTS

94574 Wine

ASURA Risk and Insurance Services

Mark & Silvia Belotz

Calicraft Brewing Co.

Casey Cannon Graphic Design

Devil Mountain Nursery

Diablo Publications

Drake's Brewing Company

Sierra Nevada Brewing Co.

Sunrise Bistro and Catering

United Site Services

Wente Vineyards

Wilder Events Co.

Zoom Video Communications, Inc.



Scott Hein

*We have made every effort to spell names accurately. If your name or donation has not been recorded correctly or was mistakenly omitted, we offer our apologies and ask that you please contact us so that we can amend our records.*





1901 Olympic Blvd. Suite 320  
Walnut Creek, CA 94596  
[SaveMountDiablo.org](http://SaveMountDiablo.org)

Nonprofit  
Organization  
U.S. Postage Paid  
Concord, CA  
Permit No. 8553

“You are part of nature.  
Every mountain is a role  
model to stand strong.  
Every breeze is a sign of  
happiness. Every bird  
chirps to you to reach  
for the stars. Every little  
beetle crawls to you to  
tell you to keep moving  
forward.”

—excerpt from nature journal of a  
2020 Conservation Collaboration  
Agreement participant, Joaquin  
Moraga Intermediate School

Scott Hein

## SAVE MOUNT DIABLO

**Preserves** natural lands through acquisition and cooperative efforts;  
**Defends** Mount Diablo and its foothills from threats through land use planning and public education;  
**Restores** habitat, wildlife, and creeks and builds trails; so you and future generations can  
**Enjoy** Diablo's parks and its wildlife.