



# DIABLO

# w a t c h

Save Mount Diablo

Protecting the Mountain Since 1971

Winter/Spring 2003 No. 34

## Joseph Galvin Ranch Acquired

"Would you like to buy our property?" In June the Galvin family approached Save Mount Diablo about their 62 acre property, which their family has owned since around 1908. The family has lived at the base of Mt. Diablo for more than a hundred years. Their father Joseph Galvin recently died and three children inherited two properties. One of them, in Morgan Territory, had a large loan coming due. The family was torn between their financial need and their father's wish that the property be preserved.

While the Joseph Galvin Ranch is spectacular, we had to pass on the offer, even though it would probably mean another expensive house like the one right next door to Galvin. Save Mount Diablo is land rich and cash poor-at the time we owned three properties and on Jan. 7th we completed our purchase of a fourth, the Morgan "Red Corral" property. Our cash reserves are low until one or more of our properties can be transferred to a public agency (see 427 acre Silva Ranch article on page 5).

Two weeks before Christmas, the Galvins contacted us again. A buyer's offer had fallen through and their loan would soon be foreclosed. Board members toured the property that weekend and then held an emergency Board meeting several days later. Although making an offer on the Galvin Ranch would cut into our operating reserves, we decided that its resources were

too important and the family's financial needs critical. We normally leverage purchases over time to allow for fundraising, but the Galvins agreed to a cash offer of \$385,000. We entered escrow the next week and closed escrow on Jan. 24th.

Most of this article was written three weeks after the Galvins contacted us in fear of

For less than the cost of a house we can protect a strategic and spectacular 62-acre property, as beautiful as it is biologically important. We can also help a ranching family that has lived here for generations."

### White Bridges on Marsh Creek

When you drive south from Marsh Creek road on Morgan Territory road, about six

miles in, the road narrows into a densely wooded and narrow stream canyon. Before long, Marsh Creek begins crossing one-lane white bridges and the canyon opens to the first in a series of small meadows along the creek's flood plain. It's not unusual in one of the first clearings to see a herd of horses. They graze on the Joseph Galvin Ranch.

As frequently happens with Save Mount Diablo's acquisitions on the mountain's east side,

we are indebted to Anne Homan for her historical research and her book, "The Morning Side Of Mount Diablo: an illustrated account of the San Francisco Bay Area's historic Morgan Territory Road", published in 2001, that we have liberally quoted and paraphrased below.

The Joseph Galvin Ranch includes a heavily wooded canyon draining west between two ridgelines to a long stretch of Marsh Creek below, just south of the point where



Save Mount Diablo Board, staff, and several guests preview the Joseph Galvin Ranch. (Scott Hein)

losing their property to the bank. We have identified \$95,000 in endangered species mitigation funding and are "dialing for dollars" to a variety of donors and funding sources. Unless we can find \$290,000 to bridge our funding gap, we will have to utilize operational reserves.

According to Ron Brown, SMD's Executive Director, "This unusual opportunity is at the heart of why Save Mount Diablo's work is important. No public agency can move as quickly as we can.

Galvin, continued on page 10

# Board of Directors

Malcolm Sproul  
*President*

Arthur Bonwell  
*Vice-President*

Allan Prager  
*Vice-President*

Doug Knauer  
*Secretary*

Frank Varenchik  
*Treasurer*

Burt Bassler

Mary L. Bowerman

Donald de Fremery

Scott Hein

Stephen Joseph

Robert Marx

Steven Mehlman

John Mercurio

Dave Sargent

David Trotter

Sharon Walters

## Staff

Ronald Brown  
*Executive Director*

Seth Adams  
*Director of Land Programs*

Suzanne Bitz  
*Office Manager*

## Publisher

Save Mount Diablo  
1196 Boulevard Way #10  
Walnut Creek, CA 94595  
925-947-3535, Fax 925 947-3603  
www.savemountdiablo.org

## Masthead Panorama

Oak Flat, Mt. Diablo  
*Photo by Stephen Joseph*

*Diablo Watch* is published by *Save Mount Diablo*, a non-profit organization dedicated to preserving land on Mount Diablo and educating the public since 1971.



CONTAINS  
SOYOIL



*DiabloWatch* is printed on recycled paper with a soy base ink and can be recycled.

Richard Rollins



## From The Executive Director...

It takes a community to preserve a mountain.

In the early 1900's R. N. Burgess assembled lands including the western half of Mt. Diablo and proposed a huge development. World War I intervened, Burgess went bankrupt and only the community of Diablo was built. New residents there provided support for a novel idea: creation of a state park at Mt. Diablo, one of the original seven in California. The first acquisitions were from Burgess' holdings. New residents of a new development gained an appreciation for Diablo

then became its supporters. That's why we held our 31st Anniversary within the State Park and honored Bob Doyle and Roger Epperson. They have loved the mountain since they were in high school and have helped SMD ever since. Our work is about balance and, like Bob, Roger and our new Board members, if you experience Diablo, you're more likely to help.

Look at the two photos below. Residents of the mountain since in 1895, Dorothy Wright's family had been suspicious of SMD when we were founded in 1971, but she sold her land to us in 2001. Today we count the Wrights as good friends. We just completed purchase of the Wright's neighbor's property, the Morgan Red Corral. In December the Morgans' cousins, the Galvins, approached us with a third opportunity to preserve another historic parcel. Their uncle grazes yet another of our properties. In May we'll add still another cousin's property, the Silva Ranch, to the State Park. Relationships matter.

Paul Lopez approached us several years ago. SMD proposed the redesign of Braddock & Logan's Sand Quarry project to cut unit numbers and add the ridgeline there to Lime Ridge Open Space. Before the project was finalized, B&L decided to sell to Standard Pacific. They came to us to ask, "Will you still support the deal?" They could have proposed a bigger project but instead decreased unit numbers further. SP preserved half of the property, built a staging area and paid for a new trail to Paradise Valley. The project was first proposed in 1989. Politics makes strange bedfellows and persistence pays off.

What's it all mean? We hope you appreciate our work and will continue your support. It's Spring! Please attend our events (hike to a waterfall?), enjoy Diablo's natural and cultural history, and maybe get even more involved.

*Ron Brown*



(Left) Ron Brown and Morgan Territory landowner Dorothy Wright. A new Parks Bond 2000 sign acknowledges Save Mount Diablo's purchase of Wright Canyon with the assistance of the Coastal Conservancy and 1000 donors.

(Right) Paul Lopez (l) and Doug Krah (r) of Standard Pacific with SMD's Seth Adams and Ron Brown at the October 12 dedication of the new Paradise Valley Trail and a new staging area at Ygnacio Valley Rd. & Cowell. (Seth Adams)

## Save Mount Diablo Merchandise



### T - Shirts

Navy Blue or Gray  
(100% cotton)

Adult Sizes:

S, M, L, XL, XXL  
\$12.50

### Coffee Mugs

Available in Gray  
\$7.50



Place your credit card order by phone (925) 947-3535, (Master Card, VISA, American Express), or by mailing a check to SMD: 1196 Boulevard Way, #10, Walnut Creek, CA 94595.

Merchandise can be purchased and picked up at SMD's office or shipped for a \$5 charge.

\*\*\* PLEASE NOTE: Save Mount Diablo's mail address is now:  
1196 Boulevard Way, Suite 10, Walnut Creek, CA 94595 \*\*\*



## ***SMD's Trail Adventure to be held on Sunday, June 1***

### ***A celebration of recreation on the mountain!***

*10K Run and Hike, 9:00 am to 1:00 pm*

Castle Rock Park in Walnut Creek is the site of the third Trail Adventure. Choose from a 10K timed run, or a 10K hike which can be accomplished in one of three divisions - timed "speed hike", guided interpretive walk, or a leisurely stroll at your own pace. The course leaves Castle Rock Park and loops through Diablo Foothills Regional Park and onto the slopes of the State Park, returning through the spectacularly beautiful Pine Canyon.

Back at the start/finish line, there will be entertainment, family activities, information booths sponsored by numerous organizations and recreation vendors, a bar-b-q lunch, and a raffle.



Co-sponsored by Marty Breen, Forward Motion Sports (Danville & Walnut Creek) & Dave Husted, Outside Interests (Danville).

Run or hike fee is \$30 (includes shirt & lunch). Call 925-947-3535 for information.

## ***April 24-27 - Four Days Diablo: Hike the Diablo Trail with us***

Last April, Save Mount Diablo led its second *Four Days Diablo* backpack trip. The four-day, three night adventure takes participants from Shell Ridge Open Space in Walnut Creek to the Round Valley Regional Preserve in Brentwood. The route crosses six parks, 60,000 acres of permanently protected open space with only two narrow paved roads along its thirty mile length.

Participants carry only their daypacks while other equipment is shuttled from campsite to campsite. You'll see beautiful and lush landscapes and acres of wildflowers. You'll learn about the geologic and cultural history of the land and experts will help identify the flora and fauna. When you reach camp each of the three nights, you'll be met with beverages and gourmet meals, followed by lectures about mountain's resources, history and future.

The next *Four Days Diablo* trip will take place April 24-27, 2003. Space is limited 20 to participants, \$750 per person. Call the SMD office (925) 947-3535 to reserve your spot, or check our website for pictures, info and sign up sheets. Don't miss out!



## ***Join SMD's E-News Distribution List***

By signing up for SMD's email distribution list you will receive monthly "Action Alerts" about current land use issues, events and activities and images of landscapes that we are working to preserve. E-News recipients get first notice of some events, and the only notice of others.

**To join the Save Mount Diablo email distribution list, send an email to:**  
<smd-request@savemountdiablo.org>  
In the message box, type the word:  
*subscribe*

## ***Visit Our Web Site:*** ***www.savemountdiablo.org***

In addition to seeing beautiful images of the mountain and learning about the history of Save Mount Diablo and its acquisitions, you can also find information about our current land use planning efforts and acquisition projects. The web site contains articles from past newsletters and our monthly Action Alerts.

The **Wild Bird Center**, in Newell Plaza, Walnut Creek donates space on its server to host our web site, thanks to Joanie & Chris Smith.

## ***United Way***

You can designate Save Mount Diablo as the recipient of your United Way Pledge. When asked to make your annual workplace donation, consider designating it to SMD, Federal ID #94-2681735.

## ***Business Contributions***

Ask your employer if they have a matching gift program, a foundation or corporate donation program to which we can apply. This year we received matching gifts from: *Bank of America Matching Gifts Program; Mal Warwick & Associates, Microsoft Matching Gifts Program, Sun Microsystems Foundation*



## ***Moonlight on the Mountain SMD's 31st Anniversary & Mountain Stars Awards September 21, 2002 at the China Wall***

More than 150 guests arrived at Macedo Ranch in bright sun. They were shuttled to Mt. Diablo State Park's China Wall above Alamo, the spectacular site of SMD's 31st Anniversary.

Guests were greeted with hors d'oeuvres, music by Michelle Latimer & her Jazz Ensemble and a silent auction. As everyone was seated for dinner, the sun began its descent and the mountain's slopes shifted in color from bright golden to red to purple. During dinner and the Mountain Stars awards ceremony and a live auction, the full moon finally made its dramatic entrance.

The event raised \$25,000 for SMD's programs, and everyone agreed that the evening was a tremendous success.

### ***Oak Sponsors***

ChevronTexaco;  
International Brotherhood  
of Electrical Workers, Local 302

### ***Buckeye Sponsors***

LSA & Associates; Windemere BLC

### ***Bay Sponsors***

Anonymous; Marx Associates, Inc.;  
Dave and Dana Dornsife

### ***Silent & Live Auction Donors***

46 business and individual donors who donated goods and services which raised over \$13,000 from successful bidders

### ***Event Committee***

Bob Marx (Event Chair), Burt Bassler, Art Bonwell, Charla Gabert, Scott & Claudia Hein, Barbara Hughes, Stephen Joseph, Dave Knauer, Sherry McCreedy John Mercurio, Amara Morrison, David Ogden, Kerry Randall, Dave Sargent, Chris Smith, Malcolm Sproul, Dave Trotter, Sharon Walters

*Photos (clockwise from upper right) Mt. Diablo State Park's China Wall; Bob Doyle receives the "Mountain Saver" Award for Lifetime Achievement; Roger Epperson receives a "Mountain Star" Award for Stewardship; Guests at dinner; Michelle Latimer & her jazz ensemble; silent auction; "Moonlight Over The Mountain"; Bob Marx, Event Chair; Tina Batt; guests & Amara Morrison (r); friends from IBEW; Malcolm Sproul, SMD President. (by Scott Hein)*

**Save The Date for 2003's  
"Moonlight on the Mountain"  
Saturday, September, 13, 2003**







*Riggs Canyon and the 427-acre Silva Ranch rising from the shadows of the Tassajara creek drainage to Windy Point. (Scott Hein)*

## ***Silva Ranch to be added to State Park***

***Dedication will be on Saturday, May 17***

"This view is incredible. You feel like you're the only person on the planet. I can't believe we're just a few miles from home." Save Mount Diablo has led several "Four Days Diablo" trips, a four day hike on the Diablo Trail from Walnut Creek to Brentwood. The second night is spent camping at the Silva Ranch, high at the top of Riggs Canyon. It's a spectacular setting.

For the past three years SMD's Board, staff and members have shared Silva as a private preserve but starting in May, when the property is added to Mt. Diablo State Park, anyone will be able to visit.

The Silva property covers three quarters of a square mile, bordered on the south and east by Mt. Diablo State Park. On the ground it turns out to be very different. Riggs is one of the most remote and ruggedly beautiful parts of Mt. Diablo, a 3000 acre deep canyon which is home to mountain lions, and golden eagles. Our Diablo Trail hikers drop steeply from rugged Oyster Point to Tassajara creek, then follow Finley Road back up to Highland Ridge.

Wind caves overlook the walk from Knobcone Point, Jackass Canyon, Cave Point, and the Morgan amphitheatre. Prairie falcons nest in cliffs, their "wek-wek" calls echoing off rock. Highland Ridge peaks (higher than Marin's Mt. Tam) to the southeast in Morgan Territory Reg. Preserve, which shares the canyon with the State Park. The ridge peaks again at the

property's NW corner, at Windy Point. The Silva camping spot is on a grassy saddle splitting the property diagonally. The view is unspoiled; at nightfall a few lights twinkle far off in the Livermore Valley.

If you climb toward Windy Point at Silva's upper elevations, on clear days the Sierra range appears. Everyday views stretch to Black Diamond Mines. Silva's fire trails bridge a gap in Finley Road and complete a variety of loops through the nearby Parks.

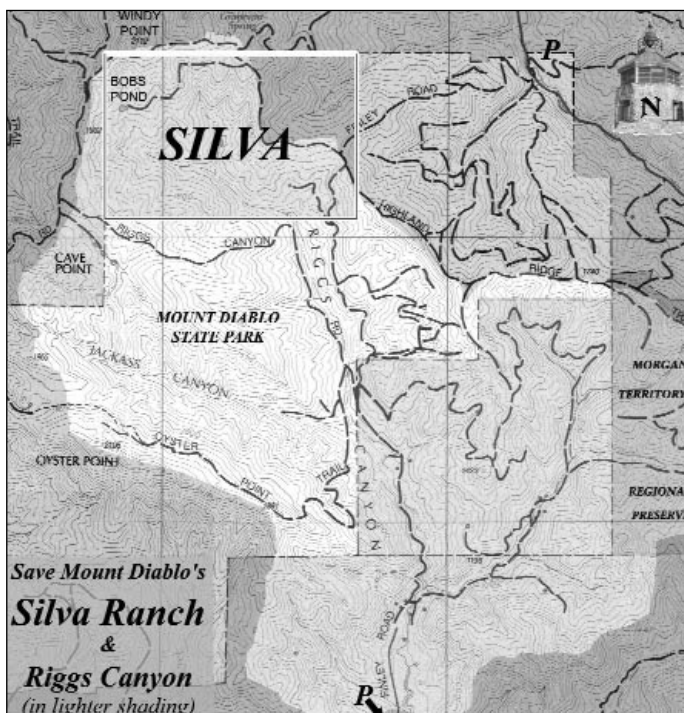
In 1987, most of Riggs Canyon was privately owned. SMD's purchase of the 631 acre Morgan Ranch in 1989 provided the first connection between Mt. Diablo State Park and Morgan Territory Reg. Preserve. In 1998, a new staging point was created near the end of the paved portion of Finley Road, providing the first easy access.

The highest elevations in the Canyon, however, remained in private hands, raising concern about the ultimate health of the watershed below. In November 1999 SMD purchased Silva, the largest remaining parcel in the canyon, for \$750,000 and further widened the corridor.

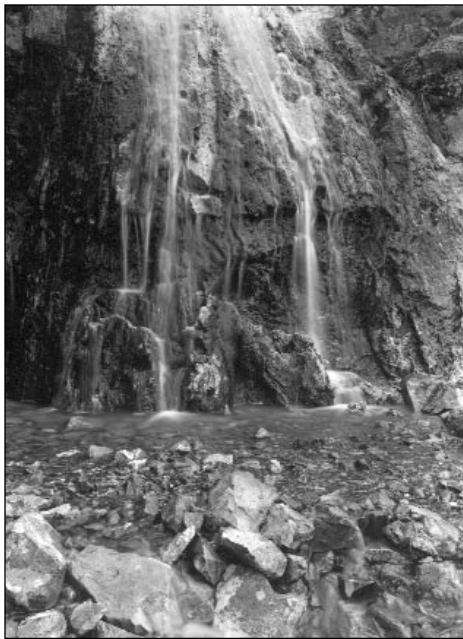
The campaign to fund the purchase was complex; the late Bob Adams, an SMD Board member at the time, provided the first \$25,000 of five option installments. Before his death, the property's pond was named "Bob's Pond" in his honor. An anonymous donor provided \$100,000 and a bridge loan was secured from the Packard Foundation for the remaining \$625,000.

Once the loan had been secured, in January 2000 SMD was granted \$400,000 by the Coastal Conservancy. Shapell Industries and Autumn Creek Associates purchased conservation easements over a total of 116 acres, as mitigation for impacts of two Danville development projects on the red-legged frog. By October 2002 Shapell had also strengthened the Bob's Pond dam and recreated another pond to enhance the frog habitat, and had removed debris.

*Silva Ranch is not open to the public until after the dedication, but there will be a guided public hike on Sunday March 30. Check the Spring on the Mountain schedule or our website for more info. For info about the dedication, call 925 947-3535.*



*Riggs Canyon can be accessed from Morgan Territory Rd. at Finley Road, the Red Corral or at the Highland Ridge trail, or from the southern end of Finley off Camino Tassajara. (Base map, courtesy of the Mt. Diablo Interpretive Association)*



Wild Oat waterfall (Stephen Joseph)

## Waterfalls on Diablo?

by Seth Adams, Director of Land Programs

### The Falls Trail

**Trailhead:** end of Regency Dr., off Marsh Creek Rd., eastern edge of Clayton.

Follow Ygnacio east to Clayton Road, turn right on Clayton; follow it past downtown, where the road rejoins Marsh Creek Road. Turn right on Regency Dr., to the end.

**Route:** Donner Cyn Rd. to Cardinet Oaks Rd., to Falls Trail, to Middle Trail and back

**Distance:** 4.8 miles round trip

**Change in Elevation:** 1200 feet each way  
**Difficulty:** Some steep areas on Donner Cyn. Road, but the Falls Trail is relatively easy. Mitchell Cyn. doesn't have big falls, but is easier going and streamside.

**Best Time To Go:** After a heavy rain; expect mud in lower Donner Cyn.

The calls come every winter-especially after a local newspaper runs a vague article and a bad map: "How do you get to the waterfalls?" (See above) "Are dogs allowed?" (No) "Are they close?" (about 2.5 miles each way) "How hard is it?" (if you have to ask, it's probably too difficult) "Is it muddy or wet?" (Yes, and that's the best time to go) Most of this article was written for our Spring '93 *DiabloWatch*. The Spring on Diablo schedule includes quite a few Falls Trail hikes.

Mount Diablo has a forbidding image to many, in part because of its name. While creeks may dry in summer, the reality is that there are always cool canyons, and even on hot days cool breezes cross upper elevations. On the north side of the moun-

tain are three large, wooded canyons. Because they're protected from the sun most of the day, Donner, Back and Mitchell Canyons have among California's best wildflower shows. The waterfalls in the upper reaches of Donner Canyon are icing on the cake. Save Mount Diablo worked with the State to preserve most of the three canyons in the mid 1970s, and helped acquire North Peak's summit in 1980.

I hiked the Falls Trail on the last day of 1992, a day-long window of sunshine that was surprisingly warm considering the snow above on the peaks. Starting at Regency Drive, you immediately cross Donner Creek just above where it merges with Back Creek in Clayton's Open Space. It looks as though the creeks had carved a gorge between Regency and Mountaire. The streets dead-end immediately across from each other leaving the creeks un-culverted, testimony to creek protection efforts in Clayton. Both creeks were very full and the lower reaches of the canyon somewhat muddy. Mud is a good sign that the waterfalls are booming in the canyon above.

Follow Donner Creek across the lower foothills with their big valley oaks and non-native eucalyptus and up into the Canyon for the first mile and a half. You'll pass the charred remains of the old Hetherington cabin and soon after leave the creek bank to begin climbing more seriously. Before long, views will open up to the Mt. Zion quarries to the west, to Mitchell Rock a little to their south, and to the urbanized Clayton valley below. Turn around and stop often to see the quickly expanding view. You'll pass the Tick Wood and Hetherington Loop trails before reaching the Cardinet Oaks Rd.

The wildflower show will really get going in March and April, but on my winter day, the signs of spring were just starting to outshine those of winter; the fresh green of the chaparral and last year's powder puff seeds of the wild clematis vines. In winter, too, the signs of the 1977 fire that burned across this section of the mountain are more visible, from blackened tree trunks, to the ghostly groves of dead gray manzanitas surrounded by the red-trunked, new growth that issued forth after the fire.

At the Cardinet Oaks Rd., Back Cyn is to the west. In the distance the Keller Ranch (Oakhurst) development is visible east of Clayton Rd. After climbing, the Cardinet Oaks Rd. heads downhill and crosses Donner Creek. On this particular day the creek was roaring, a good sign of things to come. Just past the creek, older manzanitas show the lovely red veins of living tis-

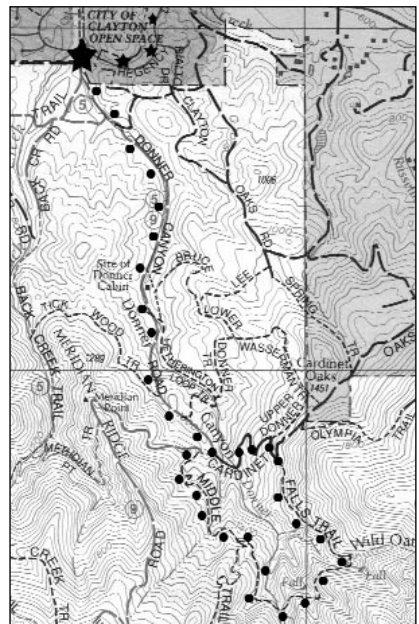
sue twining around otherwise dead gray branches. You'll double back up-slope in a short, steep section. The Falls trail cuts off steeply uphill and to the east (right) just above a turn in the road, near the 1400' contour, but quickly levels out.

As the trail crests, the water falls become visible, and the view stretches back all the way to Martinez and Benicia. On a good day the water and falls will be clearly visible on three different branches of the creek, crossing the many layers of sedimentary and metamorphic rock visible the length of the trail. The twisted, rocky landscape appears almost volcanic. The first fall sometimes drops more than 25 feet. I noticed a young falcon spiraling among the cliffs. Even in December, the green fronds of the polypody ferns were becoming visible on the rocks and one of the seasons first blooms, the pink racemes of wild currants, were already out.

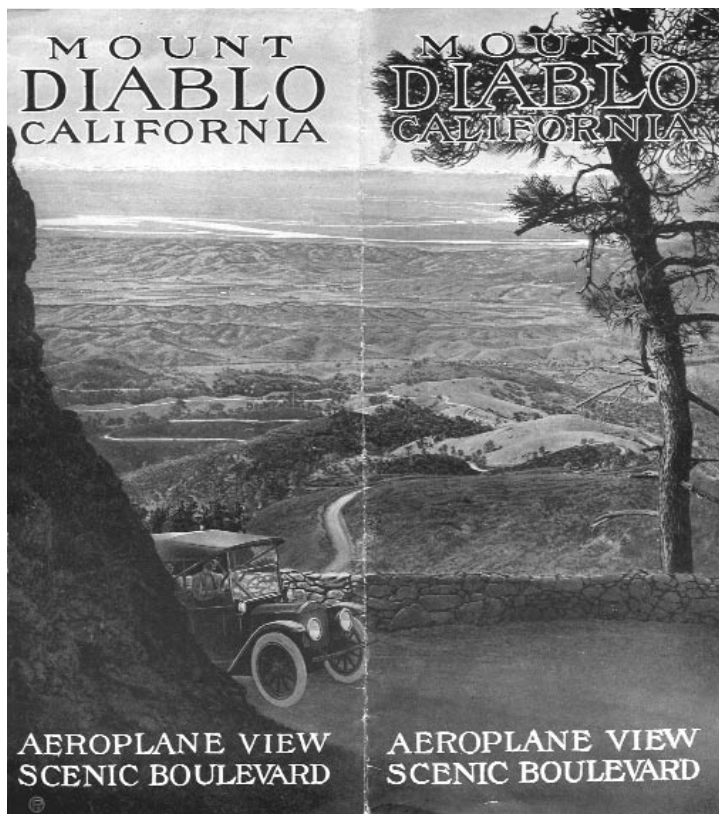
Be sensitive. The slopes are steep and erosion prone. Stick to the main trail and avoid the temptation to climb down to the falls. It's dangerous and it's damaging.

Depending on the season, you'll cross the creeks several times, before joining the Middle Trail and taking the down slope back to the Donner Canyon Rd.

Throughout the hike you'll enjoy the roar of the creeks. For variations, consider climbing up to the Meridian Ridge Road, and then down the Meridian Pt. trail into Back Canyon. The Back Creek Trail ends where you parked, after passing through many more wildflowers and thicker chaparral. You can also continue up and over to Deer Flat and back down Mitchell Canyon, or even to the summit or North Peak.



Base Map c. Mt. Diablo Interpretive Assoc., modified by Seth Adams, SMD



Cover, 1916 Mt Diablo Scenic Boulevard brochure (Collection of Roger Epperson)

## **Robert Noble Burgess: Sixty Square Miles And A Mountain**

### **World War I bankruptcy led to the creation of Mt. Diablo State Park**

By age seventeen, after completing eight years of grammar school, Robert Noble Burgess had started a fruit packing plant in Concord, called Burgess and Noble. Born in New Brunswick in 1878, his family moved to California when he was six, eventually settling in Contra Costa in 1886. His father was a minister for the Danville Presbyterian Church. Burgess ran a large sugar beet ranch as a teenager, then constructed homes in Oakland after the 1906 earthquake. He founded the R. N. Burgess Company by age twenty-nine, handling real estate and construction, and held controlling interests in a dozen banks and other companies, including WWI shipbuilding, for which he founded the town of Clyde. His first ship, the largest freighter yet built on the West coast, was named *Diablo*.

Burgess' biggest dream, however, rose to the peak of Mount Diablo, centered around the 10,000 acre Railroad Ranch he had eyed since he was a boy in Danville. In 1913 he proposed the 13,000 acre Mt. Diablo Estate development on the west face of the mountain, stretching from Walnut Creek to the

summit to Pleasanton, and founded Diablo and the Mount Diablo Park Club (later, the Diablo Country Club). One area was sold to Ansel Mills Easton and became the Black Hawk Farm. By 1919 he had gained control of more than 38,500 acres (60 square miles) from Concord to Pleasanton to Moraga.

The Oakland, Antioch & Eastern electric railway was extended to Diablo and the Northgate area to facilitate the development. He built auto roads to the top of Mt. Diablo, Mt. Diablo Scenic Boulevard,

sowed with wildflower seeds and offered them to the public as a scenic arboretum road corridor. He popularized the mountain and his development proposal with a widely distributed brochure, including the often repeated myth that Mount Diablo's view was the biggest in the world (it is probably only the biggest in California). The largest advertising contract perhaps ever written until then, was brokered with William Randolph Hearst and his newspapers, and a summit hotel, the Torre del Sol, was proposed but never constructed.

During World War I, real estate sales dried up. The Mt. Diablo Estates development stopped after the community of Diablo was built. Soon after the War, Burgess was driven into bankruptcy. His Mount Diablo Park Company sold the first parcels--3,136 acres--for what became Mt. Diablo State Park, one of the first seven in the State. Key in its support were the residents of the summer homes he had built in Diablo.

According to his daughter Fran Burgess Enright, "He was a driver, a man's man, rugged, determined, self-made and proud of it, yet rubbing elbows with the barons of the

business world." He was a good father, took his children on many camping trips, and loved to hunt, fish and ride horses, and will be remembered as an opportunist, foresighted and daring. In 1964, a year before his death, Burgess privately published his *Memoirs*, excerpted below.

### **Memoirs**

"August 1884 - For an entire week our home will be aboard the train. We leave Boston and go through New York, Cleveland, Chicago, Omaha, Salt Lake City, Reno, past Donner Lake, to the Oakland Pier." . . . "On May 2, 1886 Father received a call to preach in the Danville Presbyterian Church, at a salary of \$1,000 per year." . . . "Mother named our new home Bonny Vista. Bonny (Scotch) is interpreted as "good", and the Vista (view) was largely of the Railroad Ranch on the western slopes of Mt. Diablo, which rose four thousand feet northeast of our place. For a time this mountain wore a white lace cap of snow during most winters. On its top is the meridian monument, and the surveys in California are tied to that base."

"My perpetual hunger often made me late to school. I would stop at the bridge under which there was a small stream and a bountiful supply of frogs. I would catch a mess of them and prepare them--built a small fire and roast them. They were delicious. I can still taste them."

"Opposite us and at the foot of Mt. Diablo and well up on its foothills was the Railroad Ranch, owned by two old railroad contractors, Seth and Dan Cook. They were both bachelors at the time they acquired the property. As I heard it, they first saw the ranch when invited for a weekend by an employee, auditor or secretary, or someone

*Burgess, continued on page 8*



Robert Noble Burgess (c. Elizabeth Burgess Cox)



(c. Mike Dillon)

*Burgess's Marion steam shovel was used to construct Mt. Diablo Scenic Boulevard to the top of the mountain from 1912-1915*

*Burgess, continued from page 7*

of that caliber. On their way home they talked in wonder of how their employee could afford such a ranch, and came to the conclusion they had better look into their records. It ended by their taking over the ranch..."

"Seth and Dan were rough, hearty fellows..." "I came to know them and have the privilege of shooting on their 10,000 acres. On Saturday afternoons, Father would stake John and me out along the front of our orchard on the county road with our hoes clearing away the weeds. Along would come Seth and Dan in a Tallyho with a four-in-hand. Dan would pull the horses to a stop and yell, 'God-damn you youngsters, come here' and with great trepidation John would go up to Dan, while I gazed at the first shapely legs housed in silk stockings I ever saw. John would turn to Dan who would produce a double eagle, \$20.00, in gold, and Dan would say, 'Give this to your old man. He is the only God-damned preacher I ever knew that was any good.'"

### ***The R.N. Burgess Companies***

"In November, 1903, I moved to the 240 acre San Miguel Ranch..." "here in the rarefied air of my castle in the sky that I studied the county maps and marked

off the large holdings as possibilities for future real estate syndicating, with the idea of cutting up and marketing them as ranches."..."Many of these transactions had to wait the recovery from the disaster of the earthquake and fire that hit San Francisco in 1906, and the money panic of 1907."

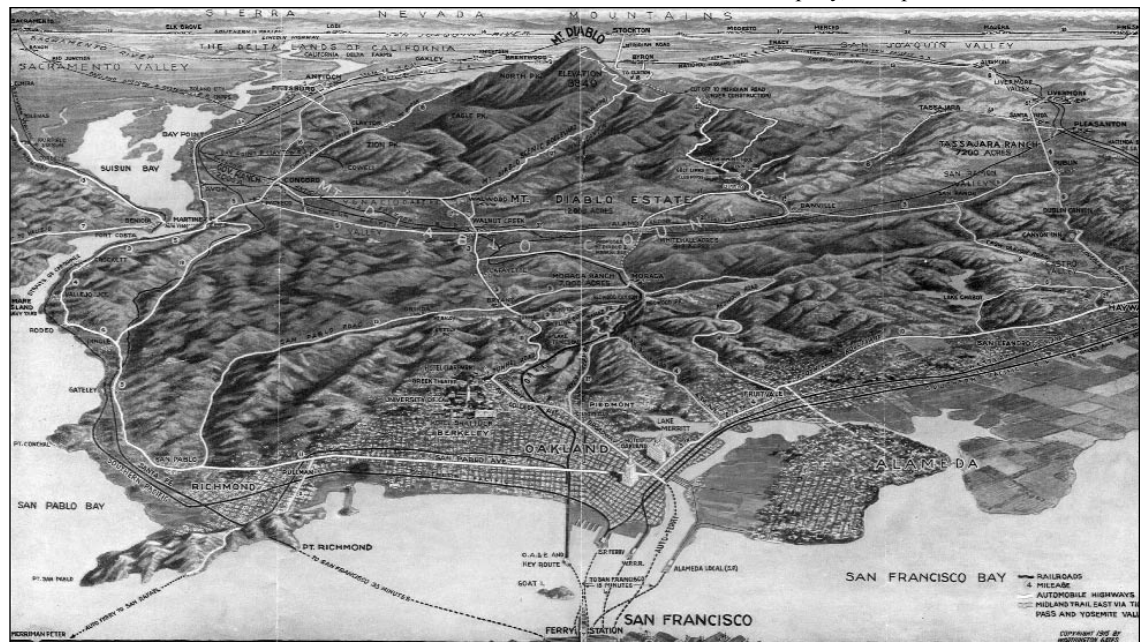
"I thought if I were established in San Francisco there would be demand for years, rebuilding the burned-out area, if one could arrange the financing, and if one could divert a trickle of the people that were settling in the East Bay area to central Contra Costa County and add to that some of the commuters to the plants on the forty miles of water frontage from San Pablo bay to Antioch, one would have business in volume. That country had a future, the Walnut Creek area."..."The {R.N. Burgess} companies were incorporated in 1908."

### ***Oakwood Park Stock Farm, Danville***

"1913. One afternoon while motoring around the Danville and Tassajara area I dropped in at the Oakwood Park Stock farm on the Railroad ranch of my boyhood. At the death of Seth and Dan Cook it was inherited by their niece, Mrs. John F. Boyd"..."When I returned to San Francisco, I called Mrs. Boyd by phone. She invited me to come for tea at three o'clock that afternoon. I accepted, then went to the Crocker National Bank and purchased a \$10,000 cashier's check payable to my order."..."Mrs. Boyd said she did wish to sell the ranch and she had set the price at \$150,000. She said she had had several buyers, but for some reason they could not meet her attorney's requirements..."

"Mrs. Boyd went to her secretary and wrote a note to her attorney, Mr. William Humphries of San Francisco. While she was at the desk I hovered around and purposely dropped the \$10,000 cashier's check where she was sure to find it, and then took my seat. When she had completed the note she handed it to me and as she returned to her chair she stooped to pick up the piece of paper, while I was reading her note, and exclaimed, 'What in the world is this?' I arose and saw she had the check and was somewhat flustered. I said, 'I brought that check over to make you a payment on account. I really have been careless and had better leave it with you, for at this rate before I get home someone is liable to pick my pockets. I suggest I endorse the check to you and then when Mr. Humphries is ready I will only have to pay him \$140,000.' 'That seems all right to me,' she said. I then said, 'There is no necessity of writing the letter over again, just put on a P. S. stating you have received \$10,000 on account and he is to collect \$140,000.' Mrs. Boyd did that, and I got up to leave. In parting I said, 'You can now feel you have sold the ranch.'"

"When I reached San Francisco I had the note Mrs. Boyd gave me photostated, then went to see Mr. Humphries. He was busy but stepped out of his office to see me and I told him I had purchased the Oakwood Park Stock farm from Mrs. Boyd. He said, 'You may think you have.' I said, 'I have, and if you doubt it here is her letter.' He then said, 'I realize you are right. I will prepare the papers.' When Mrs. Boyd accepted the \$10,000 as first payment her letter was a valid Contract of Purchase. The Mt. Diablo Park Company, a corporation, took title to



*1915 Gates Map from Burgess's 1916 Mount Diablo brochure that encouraged tourists and potential home buyers to visit Mt. Diablo, and buy one of the R.N. Burgess Company's lots. The map shows ferry, auto, bus and rail routes. (Collection of Roger Epperson)*





*OA&E advertisement for day trips to Diablo. Railroad spur lines were extended to both sides of Diablo (c. MDSP)*

the Boyd property."

"Later I purchased for R. N. Burgess Company 160 acres over the hill in Pleasant Valley, which was included in the sale to the Black Hawk ranch, and on the northwest side of the park 240-acre Cope Almond orchard, the 160-acre Bruce Stone ranch, and on the southern portion of Ignacio Valley adjoining Mt. Diablo the 1300-acre Brubeck ranch, 50 acres from Hutchinson, and the 3000 acres lying between these parcels and the park from George W. McNear, and 160 acres from H. H. Haight on the top of Mt. Diablo containing the Mt. Diablo Base Meridian Monuments. This last purchase did not come easy. This block of land contained about 15,000 acres, and contained the entire right-of-way for the Mt. Diablo Scenic Boulevard, so I started its construction from the North gate in the Brubeck tract and pushed it through to the top of the mountain. It was practically all stone or shale; much of it had to be blasted. The blasting holes had to be drilled as deep as 30 feet, and that was in the day of hand drills. I purchased a Marion steam shovel and it was operated by McCune until the entire road was graded"... "After the road was excavated to the mountain top McCune brought the shovel down about three miles and started a road to the south and west that ended in the South Gate in Diablo."

"The next move was to get the Oakland Antioch Eastern to build through Ignacio Valley to the Hutchinson Tract, connecting with the North Gate, and to build from Saranap to the Club house in the park. This was done and they regularly operated the Diablo Club car by 1914."..."Now to get a spot on the official maps for Diablo it was necessary to have Diablo made a United States Post Office. This did not prove too difficult, so Diablo was born."

### **William Randolph Hearst**

"I sat up most of the night writing and re-writing a telegram to William Randolph Hearst, a man I had never met, but I had to catch his interest on the first try."..."As we approached the club I had Mr. Bull jump the train on the offside as quickly as possible and hurry to the stables and have one of the

stablemen drive all the saddle horses, except one for Mr. Hearst and my horse, into the big pasture and herd them well up the mountain so there would be no chance of gathering them in time for the guests to catch up with Mr. Hearst and me."..."I had an important deal to discuss and felt it was best not to have any distractions."

"Mr. Hearst and I were about four hours in the saddle. He selected a high wooded hill-top on which he would build. He worked out plans for the proposed development as we rode along. He said, 'We will have to have the boulevard right-of-way 200 feet wide so it can be planted to trees and shrubs that will do best at the various elevations.' The elevations were from 350 feet to 4000 feet. 'And, when completed, I will deed it to the University of California as an arboretum and have it endowed, and I will give some thought as to how to develop it further so it will be of educational importance.'"

"The top of Mt. Diablo is the base meridian for all California surveys. From its top there is a wonderful view on a clear day. It is possible to see over an extent of 40,000 square miles of valleys, rivers and mountains, -- the pillar of smoke from Mt. Lassen volcano. Looking westward you see the San Francisco Bay area, and as far west as the Faralone Islands. Mr. Hearst said, 'This is a wonderful view, and should be the site of a castle-like building. It is worthy of Julia Morgan's skill.' (She was his architect on the San Simeon Castle and his place on the Russian River. Plans for the Castle were later drawn up by Arthur B. Benton and approved by the Department of the Interior, but World War I came along and it was not built then.)"

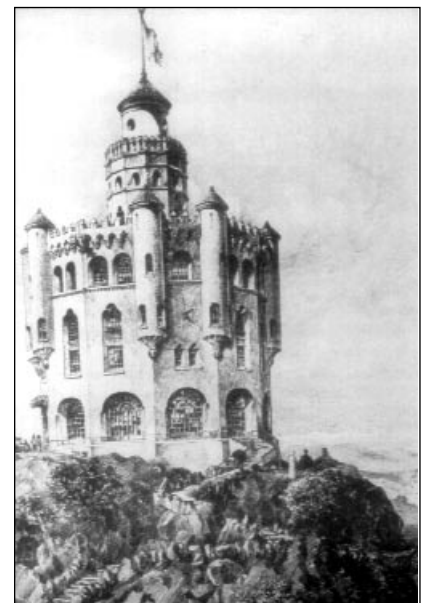
"To round out the 13,000 acres in Mt. Diablo Villa homes, the sale of which was under way to Mr. Hearst, it was necessary to have a report on the available water."... "the most dependable source was the Pleasanton Valley basin."..."So we purchased as the Tasajarra Land Company 8,000 acres that connected the Mt. Diablo Villa Homes with the Pleasanton basin and from them got a right of way for a pipe line. To make the Hearst contract operative we had to complete the Mt. Diablo Scenic Boulevard so it could be traveled from the north gate in Ignacio Valley to the top of Diablo and down to the south gate in the Mt. Diablo Villa homes. (Oakwood Park Stock farm and other properties comprised the Mt. Diablo Villa homes, all together 13,000 acres.)"

"The contract as finally worked out between William Randolph Hearst and R. N. Burgess Company was signed in 1914, and provided for the sale of 15,000 acres reaching from the terminal of the Oakland and Antioch railroad in Ignacio valley to the top of Mt. Diablo and down its south-east slope to Diablo, at a price of \$100 per acre"..."R. N. Burgess Company was to proceed with developing the golf course, club house, and the building of the Mt. Diablo Scenic boulevard. The advertising was not to start until the boulevard was graded. To the expenses of improvements there was to be added ten per cent for overhead and profit. R. N. Burgess Company was to be the Sales Agent and was to be paid twenty per cent..."

"This contract was the largest advertising contract ever written. The delay of Mr. Hearst's signing of this contract and the completion of the Boulevard brought us up to the time the United States entered World War I, and the American people then were more concerned with the draft and taxes than with seeking a milder climate."

"Speculate only when you have more money than you need, never when you need more money than you have."

{R. N. Burgess became financially successful in other ventures after the Great Depression. He died in 1965. Several of his children continue to live in the area.}



*Burgess's Moorish Torre del Sol hotel was proposed for the mountain's summit c. 1916, but was never built (c. MDSP)*



*Oak woodland on the south ridge of the Joseph Galvin Ranch, (Scott Hein)*

*Galvin, continued from page 1*

Morgan Territory road narrows to one lane. SMD has a policy to acquire properties along the Marsh Creek corridor, one of the longest and least developed streams in the East Bay. The creek's headwaters and several miles of its length are protected within Morgan Territory Reg. Preserve and Mt. Diablo State Park. Several more miles are protected at Round Valley and in the new Cowell Ranch State Park, and its mouth is found near the proposed site of the Delta Science Center in Oakley at Big Break.

Galvin's northwestern corner starts at a relatively new bridge over the creek, leading to a multi-million dollar house built by Tom Candiotti, a former Oakland A's pitcher. The western boundary follows the road and creek south to include two of the distinctive one-lane white bridges built over Marsh Creek. A third bridge is located at the southwestern corner of SMD's "Red Corral" property.

According to Homan, "Fred Bloching often



*Joe & Rose Galvin, c.1916 (c. Galvin Family)*

drove his grandfather Manuel Nunez to the Morgan Territory ranch in the family buggy, fording the creek before the bridges were built. 'There wasn't much of a road then-just a mud hole.' Later he and his grandfather worked on the road for the county. 'My grandfather built all those bridges on that road-he built them all. He was good at pilin' rocks. You know, he could stack rocks...He could really make a rock wall good and not use any cement-stack 'em in there. They're still there in those bridges.'"

One ridgeline is chaparral covered, with a fire road threading its way up through fragrant brush. The other ridge includes oak woodland with rock outcrops cresting to grassland and expansive views of Windy Point and the mountain. The spectacular property rises east to the Seeno square mile, recently protected with a conservation easement.

Galvin is habitat for a variety of wildlife including the rare Mt. Diablo sunflower, Mt. Diablo globe lily, and the threatened California red-legged frog. It almost certainly serves as habitat for the threatened Alameda whipsnake.

"Acquisition of the Joseph Galvin Ranch helps accomplish several of SMD's goals including helping to establish a better corridor between Morgan Territory Regional Preserve and Mt. Diablo State Park, while protecting part of the Marsh Creek riparian corridor and significant biological resources. The property is a piece in a puzzle designed to conserve the resources of Morgan Territory. By contrast, the Candiotti mansion next door shows what

might easily have happened instead," said Malcolm Sproul, SMD's president.

### ***Roots in Portugal's Azores Islands***

The Morgans, Cardozas, Silvas, Correa Azevedos, Vieras and Galvins are all related, with ancestors from the Azores. The Joseph Galvin Ranch is on Section 10, straddling Morgan Territory Road. A section, or square mile, includes 640 acres. The Galvin Ranch has passed through the hands of three generations of "Joe" Galvins and has only been used for grazing.

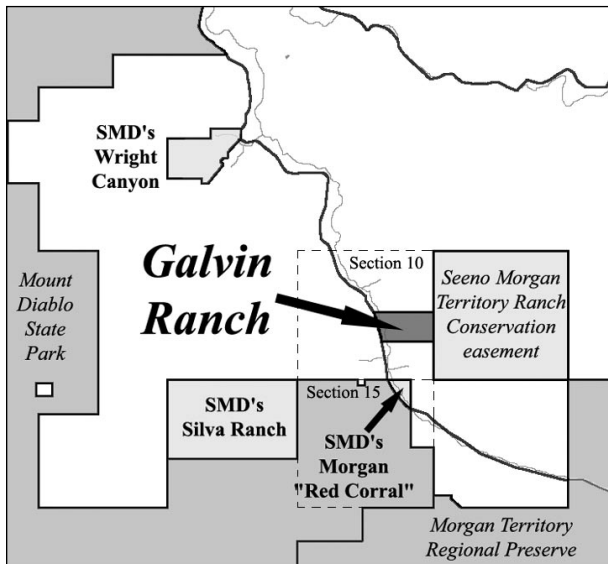
Section 15, most of which was acquired by Save Mount Diablo in its purchase of the 631-acre Morgan Ranch in 1989 and which includes our recent Morgan "Red Corral" acquisition, is adjacent on the south.

Jeremiah Morgan, for whom Morgan Territory is named, first visited Mt. Diablo's east side around 1856 from his home in the Ygnacio Valley and then moved there the following October. "Jerry" owned Section 10 as early as 1857 and Section 15 somewhat later. His house and barn were located on the northwest corner of Section 10. The barn is still standing. When Morgan died in 1906 he had lost all of his property and by 1908 the Bank of Concord owned Section 10. Antone Correa-Azevedo probably bought it at a bank sale that same year or possibly somewhat later.



*Maria Felomena & Joseph Galvin on their wedding day May 24, 1964 (c. the Galvin Family).*

"Maria Thereza Cardoza emigrated from the Azorean island of São Jorge to Boston in the late 1800s and then traveled cross-country to California, where she married Declusian 'John' Silva, another Azorean" ... "the couple lived on the old McGrew place on the north end of Morgan Territory Road, about six miles from Marsh Creek Road. Shortly before the birth of their second child in 1895, John died of pneumo-



nia" ... "his death occurred during the rainy season, and his body had to be brought down on a sled because the road was so muddy. Visiting physician Dr. George McKenzie declared, 'Don't ever ask me up there again!'"

"Left with two small daughters, Maria Thereza married Joseph Correa Azevedo {brother of Antone}, who had also emigrated from São Jorge. Their daughter Luzia (Lucy) described her father as a good, gentle man who was very strong physically and a hard worker, taking on the utmost exertion in order to become a property owner."

On March 4, 1909 Joseph was killed, at age 47, in an accident near Martinez. "The 1909 court-ordered inventory of the property belonging to Joseph Correa Azevedo showed that at his death he owned 1,045 acres of land, worth more than \$6000, much of it along Morgan Territory Road." ... "Two years after Joseph's death, Maria Thereza Correa Azevedo married her brother-in-law {Antone}, creating a combined family of 12 children, including two orphaned girls she had adopted."

"Lucy Viera described her mother, Maria Thereza Cardoza Silva Correa Azevedo, as a calm person in the midst of the storm of this large integrated family. Maria Thereza and her daughters baked 16 to 20 loaves of bread every other day on their wood stove. They made cheese that had a flavor and texture similar to jack cheese today. Lucy remembered her mother's potato doughnuts and Portuguese sweet bread, made for special occasions. Another household chore was making lye soap. Despite her heart trouble, Maria Thereza worked very hard and had outlived her third husband by more

than seven years when she died on 14 November 1936, one day before her 70th birthday."

Joseph Galvin (either Joseph Bento-Galvin or possibly Bento Galvão in Portuguese), emigrated from the Azorean island of São Miguel. He worked for the Azevedos when he was 18 or 20, and met and married Rose Correa Azevedo. Three of Maria Thereza's daughters inherited parts of Section 10 (after marriage they were Anne Morgan, Lucy Viera and Rose Galvin).

Joseph and Rose had four sons, Everett, Herman (Benny), Jerome (Jerry), and Joseph. Eventually the brothers split up the properties they jointly inherited and ranched. "When the property was subdivided we put in the fences that summer. With a big family like ours, everyone pitches in and helps," said Joe Galvin, the second Joseph's son.

Joseph's wife Maria Felomena Medeiros Galvin, also from the Azores, died January 14, 1988 at age 53. Joseph passed away on July 17, 2001 at age 71 leaving property, including the 62 acres SMD purchased, to three of his children, Maria, Joe, and Tony.

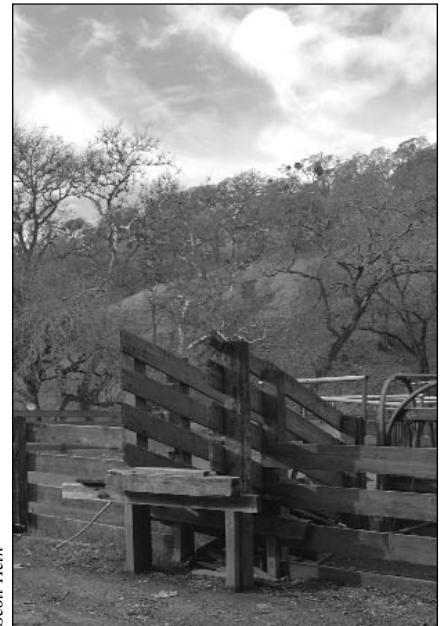
"My dad always wanted to make a park out of the Morgan Territory property. It was one of those dreams he had. When something's been in the family for a long time, you're glad that it won't be destroyed, and that people can continue to value it. I'm glad that the property will be protected and left alone," said Joe.

*The Joseph Galvin Ranch is not open to the public except by guided tour.*

*There is a public hike there on April 19, Saturday, 10:00 AM. Check the Spring on Diablo schedule or our website for more information.*



Scott Hein



Scott Hein

## Red Corral Purchase Complete

On January 7, 2003 Save Mount Diablo completed the \$290,000 purchase of the twenty acre Morgan Red Corral, for future addition to Mt. Diablo State Park.

We acquired the 631-acre Morgan Ranch across the road from the Red Corral in 1989 and immediately transferred it to the State, but there is very little parking to access the addition. The Red Corral will provide space for a small staging area while protecting a section of Marsh Creek.

SMD optioned the Red Corral on July 10, 2002 from Bill and Naomi Morgan and had six months to complete the purchase. We will land bank the property until transfer to the state. We have agreed to allow continued use of the property's corral and chutes for transfer of cattle to trucks.

Funding for the purchase was awarded to SMD on July 19, 2002 as part of a penalty paid by the Seeno development company for Endangered Species Act and Streambed Alteration permit violations at its San Marco project in Pittsburg.

Save Mount Diablo has also agreed to place a historical plaque onsite, describing Jeremiah Morgan, for whom the area is named.

*The Morgan Red Corral is not open to the public except by guided tour. There will be a public hike on Sunday March 30. Check the Spring on Diablo schedule or our website for more info.*



Michael Sewell

## Membership Matters

Save Mount Diablo's annual operating expenses are underwritten by the financial support received from membership. In addition to financial support, the number of members we have is a statement to legislators and others funders about the level of community support for our projects. We would like to thank the following individuals who have become members since January 1, 2002. *We invite you to join them in supporting Save Mount Diablo's efforts to preserve open space.*

### Founder's Circle

Ten year pledge of \$10,000  
Anonymous  
Dave & Dana Dornsife

### Summit Club

\$1,000 or more  
Burt Bogardus  
Braddock & Logan Services  
Inc - Joseph Raphael  
Jed & Rosemary Daniel  
Joe Goldstein  
Douglas Lacey & Cindy  
Silvani-Lacey  
Linda Locklin  
Robert & Shirley Nootbaar  
Richard Rollins  
Marian Scott  
Richard & Sandra Smith  
Mildred Snelson

### Peak Guardian

\$500 or more  
Jim & Carolyn Butler  
Dina Colman & David  
Luczynski  
Sally Dalton & Peter Gochis  
Raymond & Laura De Pole  
Kaye Decker  
Steve Evans & Kathleen  
Correia  
Lee Glasgow  
Scott & Claudia Hein  
Carolyn & Bob Mills (Mills  
Associates)  
Gordon & Donna Monroe  
David Ogden & Sandi Biagi  
Henry Stauffer  
Earl & Marlys Worden

### Mountain Saver

\$250 or more  
Judy & Andy Adler  
Anonymous  
Alan & Helen Appleford  
Bill & Joyce Ashurst  
Mary Baldwin  
Geoffrey & Sandy Bellenger  
Lesley Benn  
Peter & Waldy Breidbach  
Bette Brockman & Jim  
Richards  
Diane Brown  
Dorothy Brown  
Patrick & Shirley Campbell  
Rick & Suzanne Cordes  
Phillip & Jean David  
James Day  
Tom Fannin  
Sidney & Linda Fluhrer  
Liana Genovesi & Scott  
Ahrendt  
John & Cathy Grossu  
James & Roberta Hadley  
Peter & Judi Hage

Ronald & Ann Hendel  
Dick Heron & Sue  
Pitsenbarger  
Harlan & Gayl Hirschfeld  
Sandy Hood  
John & Linda Judd  
David & Lois Kail  
John Kiefer  
Knapsack Tours- Michael  
Palucki  
Gerald & Rosette Koch  
Gordon & Lynn Lakso  
Paul & Yen Yee Fun Locklin  
Patricia Lopez  
Eleanor Loynd  
Bob & Joan Marx  
Robert Maynard  
Steve & Linda Mehlman  
James & Sharon Moore  
Amara & Clark Morrison  
Theron Nelson  
Michael O'Donahue  
Lawrence Peirano  
Stephane Pelchat  
Brad & Trish Piatt  
Daniel & Janet Schalk  
Chris Schmidt- Plant Décor  
Monica Sheridan  
Sandor & Faye Straus  
David & Deborah Trotter  
Frank & Barb Varenchik  
Carl & Lynne Walter  
Dick & Margo Watson  
David Whippy

### Diablo Donor

\$100 or more  
Barbara Ageno  
Thomas & Annette Alborg  
Roger Alperin  
Anonymous  
Anonymous  
Anonymous  
Andy Aston  
Louise Baldwin  
Willard Ballenger  
William & Diane Barley  
James Bartlett & Mimi Foord  
Virginia Bary  
Burt Bassler  
Stephen & Karen Beck  
Claude & Carol Benedix  
Edward & Mildred Bennett  
William Bernell  
Bruce & Sandra Beyaert  
Patty Biasca  
Anne Blandin  
Jim Blickenstaff  
Mark Bole  
Marchetta Bowdle  
Malcolm & Sylvia Boyce  
Don & Jeanne Boyd  
Kate Boyle  
Lynn & Butch Brear  
Alex Brendel  
Ron & Sharon Brown

Walter & Joann Brown  
Pauline Browne  
Raymond & Patricia Buck  
Richard & Lois Bunyard  
Robert & Gail Burnett  
John Butera (Butera Video  
Productions)  
Pam Butler  
Michael Buturla & Gineth  
Soto-Buturla  
John & Jane Cambus  
Deborah Carr  
Harvey & Phyllis Ceaser  
Allan & Lynda Chasnoff  
Charles Clem  
Alan & Kathleen Clute  
Nancy Collins & Francesco  
Adinolfi  
Janice Costella  
Douglas Cox  
Randall & Jacqueline Curtis  
Richard Davis & Sandra  
Jones  
Don de Fremery  
Brenda De La Ossa  
John Deeming  
Ernest & Florence Dickson  
Conrad & Shirley Diethelm  
Carl Dinerman & Marianne  
White  
Jack & Ami Ditzel  
Robert Docili  
Linda Domeier  
Lee & Barbara Drew  
Michael & Chryl Dumas  
John Edwards  
Chuck & Pat Eisner  
Stephen Elliott  
Bill & Margaret Espey  
Riley & Karen Etheridge  
Kent Fickett Beckee Beemer  
Paul & Kathy Fitzpatrick  
Susan Flautt  
Susana Fousekis  
Paul, Lisa & Kelsey Francis  
Greg & Cindy Francisco  
WJ Frank  
Alex & Deborah Friedman  
Leslie & Virginia Gallagher  
Bruce Garner  
Al & Pat Gavello  
Barbara George  
Donna Gerber  
Bingham & Larry Gibbs  
Elizabeth Girgich  
David & Diane Goldsmith  
Larry & Cynthia Grabel  
Julie Grisham  
Donald & Melinda Groom  
Phil & Susan Grover  
Richard & Faye Guarienti  
Jean Halford  
Sydney & Helen Hammill  
Katherine Hart & Donna King  
Tom & Janeen Heath

Robert Heaton  
Kristen Hein  
Eric & Debbie Hinzl  
Roz Hirsch  
Michael & Nadine Hitchcock  
William & Marilyn Hoenig  
James & Toril Jelter  
David Jesus  
Kimberly Johnson  
Roger & Donna Johnson  
Richard Kawin  
Zebi & Vera Kerekes  
John & Marian King  
Jesse & Sharon Krider  
Steve Larson  
Philip Lathrap  
Jeffrey & Deborah Leighton  
David Lingren  
David Loeb  
Michael Magnani  
Jon Maienschein & Lisa  
Cline  
Vicki Marlow  
Bunny Martin & David  
Kurtzman  
Martha Martin  
Robert McClain  
James & Joan McCracken  
Jim & Phyllis McDonald  
Winton & Margaret  
McKibben  
Mark McLaren & Nancy  
Norland  
Shawn Mehaffey  
John & Jill Mercurio  
Melissa Moehle  
Barbara Monsler  
Mark & Marie Morley  
Maynard Munger  
Carl Myers  
David & Margaret Nicholas  
Craig Nielsen  
Michael Ogles  
Charles & Ann Olsen  
Orinda Garden Club  
Orinda Hiking Club  
Verna Osborn  
Carly Owens  
Albert & Pam Palitz  
John Patterson  
Lisa Pellegrino  
Susan Peters  
E.L. & Carol Pollock  
Paul Popenoe  
Rita Poppenk  
Donald & Mary Lou Prieue  
Jeffrey Radigan  
Bill Ralph  
Ed & Gwen Regalia  
Connie Regalia  
Jennifer Rice  
Charles Rickenbacher  
Grant Peterson - Rivendell  
Bicycle Works  
John Roebuck  
Michael Rosenblum

Bud & Olga Jane Rotermund  
Al & Mary Anne Sanborn  
Leanne Sanderson  
Martin Sargent  
Ernest & Dorothy Sattler  
Jean Saylor  
James & Pat Sayre  
Anthony Schilling  
Leo & Maryann Schindler  
Rob Schonholtz & Jane Hicks  
Paul & Nancy Schorr  
Judith & Earle Schremp  
Mady Schubarth  
Andrew Sessler  
Rich & Ann Sexton  
David Short  
Sierra Club Bay Chapter- Mt.  
Diablo Group  
Reta Simmons  
Sharon Singer  
David Smith & Terry Blair  
Kathryn Smith  
Ron & Judy Smith  
Alan & Mary Louise Smith  
Beth Snortum  
Leonard & Barbara Songster  
John & Elaine Spiecker  
Richard & Mary Sproul  
Malcolm & Casey Sproul  
Stan & Linda Stanley  
Andrew & Karen Stein  
Dean & Samantha Stoker  
Nancy Storch  
Patricia Thomas  
Patricia Thunen  
Tom & Jill Toffoli  
Frank & Edith Valle-Riestra  
Jacob Van Akkeren & Leslie  
Bartholic  
Verne Van Vlear  
Craig Vassel  
Rudy & Sandy Wagner  
Clifford Walker  
Barbara Walters  
Sharon Walters  
Milton & Margaret Watchers  
Douglas & Ruth Waterman  
David & Elaine Wegenka  
Stuart & Kim Weinstein  
Tom & Carolyn Westhoff  
Robert & Karen Wetherell  
Ayn Wieskamp  
Ann Witter  
Judy Wobleski  
John Wahr & Stephanie  
Simmonds  
Hobie & Ann Woods  
Milo Zarakov & Deborah Long  
G & D Zellingers  
George & Sarah Zimmerman

### Friends

\$35 or more  
520 Members support SMD  
in this membership category.





Scott Hein

Long time residents of the Joseph Galvin Ranch

## General Donations

Lillian Adams  
Penny & Jim Adams  
Judy & Andy Adler  
Barbara Alexander  
Dolores Anderson  
Jack & Diana Anderson  
William & Margaret Andrews  
Henri Audiffred  
Richard Bachenheimer  
David Baer  
Bruce Baldwin  
Willard Ballenger  
John & Deborah Barone  
James Bartlett & Mimi H. Foord  
Greg & Joanne Bartow  
Hunt & Patti Bascom  
Christina Batt  
Henry Beck  
Stephen & Karen Beck  
Joseph & Susan Bell  
Walter & Evelyn Bell  
Mark & Silvia Belotz  
Margot Bevis  
Lewis Bielanowski  
Jerry & Floy Blair  
Bea Boorey-Christolos  
Alan Stuart & Katharine Boren  
Boucher Family Foundation  
Richard & Mary Bowers  
Madaline Boyes  
Doug & Kristine Brady  
Kristi Branam  
Jennifer Brodie & Robert Brownbridge  
Diane C. Brown  
Jean Brown  
Ronald & Barbara Buffi  
Diana Bunting & Modesto Piazza  
Richard & Lois Bunyard  
Constance Burgess  
Kathleen Burke Williams  
Philip & Marjorie Bush  
Dennis Butkowski  
Carol Campbell  
Patricia & John Campbell  
Albert Capron  
William & Deborah Carr  
Joan Casey  
Loren Castro  
Allan Chasnoff  
Clayton Women's Club  
Robert Clear & Barbara Judd  
Howard & Betty Coates  
Patricia E. Coffey  
Florence Cole  
George & Joan Colvin  
Jim & Patricia Compton  
Jennifer Cook  
Sherrill Cook & Richard S. Stephens  
Kenneth Cribley  
Patrick & Barbara Cullinane  
Sharon Cummins  
Sylvia Dajani  
John & Charlice Danielsen  
Glen & Georgene Deardorff  
Joe & Beryl Deas  
John S. Deeming  
Anne DeLaney  
Helen Deman  
David & Merleen Devine  
Fred & Susan Donecker

Julia Dos Santos  
Lee & Barbara Drew  
Thomas & Jane Dunphy  
East Bay Bicycle Coalition  
Mark Edgren  
Roy & Isako Egawa  
Joel & Diane Eisenberg  
Chuck & Patricia Eisner  
Ken & Emily Elliott  
Robert & Margaret Elliott  
Anthony & Marie Emerson  
Marvin & Ruth Epstein  
An Mari Ericsson  
John Erskine  
R.F. & B.A. Falck  
Robert & Lucia Falcone  
George & Toni Finger  
Helen Fink  
Kenneth Fischer  
Harold & Donna Fogel  
Francis Frederick Jr  
Paul Friedlander  
James & Mary Ann Gaebe  
George Ann Gams  
Mark & B. Geiser  
James & Judy Gillivan  
Gary & Judith Ginder  
Mary Givens & Austin Burchell  
Marilyn Goebel  
Marilyn & Ted Goeller  
Joseph Goldstein  
Ronald Golman  
Paul & Ann Gommel  
Fred & Elaine Grab  
John S. Gravell  
Beth Graves  
Barbara Gregory  
Charles Gresham  
Plato & Patricia Grivas  
Robert & Beverly Grunder  
Beverly & James Gulley  
Richard & Rosita Gustafson  
Carlyn Halde  
Carol Hanrahan  
John & Esther Harris  
Kathleen Harrison  
Richard & Margaret Hart  
Karl & Billi Haug  
Doyle Heaton  
Tamra Hege  
Virginia Heiderick  
Lucy Henderson  
James T. Hendon & Kathryn Brown  
Julia Henshaw  
Wendy Heyse  
John & Eleanor Higson  
Robert & Bette Hill  
Harlan & Gayl Hirschfeld  
Ella Hirst  
Michael & Nadine Hitchcock  
Richard Hoedt  
Katherine Hoffman  
Norma Holder  
Myrtle & Conrad Hopper  
William K. House  
Scott & Frances Hovey  
Jane Hrynkow  
Joseph Huettl  
Kenneth & Joanne Hughes  
Donald & Lorelle Hunt  
Leon Hunter  
Andrew & Barbara Imbrie

Peyton I. Jacob  
Ruth V. Jamison  
James & Toril Jelter  
Jepson Herbarium, UC Berkeley  
Donald & Carole Johnson  
Steven & Anne Jones  
Gail Jordan  
Paul & Dorothy Joslyn  
Giselle Jurkanin & Kristin Cooper  
Robert & Patricia Kahn  
Peter & Julie Ann Kaldveer  
Ursula Kaprielian  
Paul & Deirdre Katz  
Raymond Katz & June Maselbas  
Elias Katz, Ph.D.  
Diane Kauffman  
Valerie & Jim Kayl  
Kathryn Kearns  
A.M. Kern  
David & Mary Kimble  
Doug Knauer & Jennifer Babineaux  
Emma Kolokousis  
Jesse & Sharon Krider  
Wayne Ladd  
James & Beverly Lane  
Roger & Sue Lang  
Theodore & Janice Lassagne  
Philip Lathrap  
Anne LeBlanc  
David Lee  
Ian & Mary Lee  
Edward L. Leech  
George Lehrer  
James A. Lehrman  
Marston & Anne Leigh  
David Lenehan  
Ronald & Rose Lernberg  
Anne Leslie  
Edward M. Lindsay  
Lindsay Wildlife Museum  
James Lingel  
Linda Locklin  
Ruth Loomis  
Paul & Carol Lou  
Nathan & Suzanne Lutz  
James & Shirley Lynch  
John MacLay  
Robert & Valerie Mahoney  
Bob & Diane Malucelli  
Ed & Carol Margason  
Christopher & Vicki Martin  
Bunny Martin & David Kurtzman  
John & Marti Masek  
Carolyn Matthews  
Theodosia Maurer  
James & Mary McCall  
James & Emily McCormick  
Kate McKillop  
Christopher & Barbara McLain  
Mark A. McLaren & Nancy Norland  
Robert McLaughlin & Theresa Rumjahn  
Diana Meadow  
Shawn Mehaffey  
Samuel & Mary Mills  
Wayne & Silvia Montoya  
Joe & Jerilyn Moore  
Yolanda Moreno  
Richard & Carol Mortensen  
Dave Moss  
Margaret Mowery



Columbine

Denise & Bruce Muirhead  
Theron & Elizabeth Nelson  
Helen E. Newman  
Richard & Dorothy Nichols  
Raymond & Judith Nickel  
Robert & Shirley Nootbaar  
Marilyn Nuber (Contra Costa Roofworks)  
David Ogden & Sandy Biagi  
Michael Ogles  
Stephen & Susan Ohanian  
Shelley Okey  
Dale & Jean Olds  
Charles & Anne Olsen  
Bill & Kay O'Neil  
Jim O'Neill & Kathleen Mosier-O'Neill  
Diana & Peter O'Rourke  
Verna Osborn  
Diane Oshima  
Greg Page  
Frank & Julieanne Palermo  
Robert & Patricia Partridge  
Nancy & Tom Patten  
Karlene Paufler  
Rodney & Sarah Paul  
David & Mariana Peck  
Marianne Pedrazzi  
Dale Perkins  
Basilia Peterson  
Fred & Virginia Peterson  
Marjorie & Theodore Plant  
Allan Prager  
Gloria Pulido  
Mildred Rafoth  
Richard & Rayna Ravitz  
Hubert & Joan Reber  
Wolf & Hadassa Reiner  
Clara Richert  
Elsie Richey  
Charles & Linda Rickenbacher  
Lois Riddle  
John & Muriel Ridgway  
Randy & Kathy Ridgway  
Tom & Ulla Rieger  
Brad & Ruth Riordan  
William Robinson  
Barr & June Rosenberg  
Jay Rosenthal  
Elisabeth Rothschild  
Frank & Marilyn Royer  
Michael & Kyle Ruggieri  
Bob Ryon  
Kenneth & Marjorie Sauer  
W.B. & Beatrice Scarborough  
Bill Schaaf  
Leo Schindler  
Rudolf Schmid  
Alexander Schmid & Tina Hogan  
Mady Schubarth  
Allen & Alyce Schwartz  
James & Patricia Scofield  
Arlene Scoles  
Arlene Scoles  
Carlo & Margareta Sequin  
Peggy Shafer  
Patricia Shanahan & Brad Waite  
Ann Shanck  
Monica Sheridan  
Virgie Shore  
John S. Shudlick  
Robert & Carol Shuey  
William Sikkema & Linda J. Young  
Dana & Marti Sketchley  
Bob Slyker  
Matt & Mary Smith  
Roger & Helen Smith  
Kathleen Smith  
Gary & Carolyn Snyder  
Paul D. Spiegel  
Cindy Spring  
Sandra Sprowl  
Barbara Steben  
Susan Steinberg & Dennis Herzog  
James & Barbara Stevens  
Dean & Samantha Stoker  
Jo & Jack Sudall  
Nanette Sullivan  
Velta Suna Bovey  
John & Elouise Sutter

Dan Suzio  
Thomas E. Swaine  
Paul Swatek  
Joanne Taylor  
Virginia Thomas  
Patricia Thomas  
Deborah Thomason-Olsen  
Larry Thompson  
Gregory & Cathy Tibbles  
Chris Valle-Riestra  
Linda Wallgren  
Walnut Creek Garden Club  
Sharon Walters  
John & Donna Walton  
Frederick & Margaret Warnke  
Bjorg & Jan Wasserfall  
Franz & Sarah Wassermann  
John Waterbury  
Dick & Margo Watson  
Harry Wayne  
Alfred P. Weiler  
Neil & Madeline Weinstein  
Peter & Dolores White  
Peter & Ann Whitehead  
Kristen C. Wick  
Stephen & Margaret Wilcox  
Sonja & Kim Wilkin  
James & Audrey Wilson  
Craig & Barbara Woolmington-Smith  
Leslie & T.R. Wyatt  
Joel & Jacqueline Zaves  
Peter & Midge Zischke  
Frances Zurilgen



Monkey flower

## In Honor of

Eric, Lesley & Alexa Bleth  
Mildred Partansky  
Ami Ditzel's Birthday  
Solweig Sandell  
Anita & Christina Ditzel  
Abigail Grabow,  
"for being a good kid"  
Robert Myers  
Don & Ann Jones  
Jeanne Thomas  
David Luczynski  
Carol Luczynski  
Jane Manning  
Sara Manning  
Marti & John Masek  
Dick, Jayna, Henry & Spencer Elgin  
Matthew O'Neil  
Anonymous  
Michael & Janice Partansky  
Mildred Partansky  
Robert & Dolores Price's 60th Wedding Anniversary  
Robert & Dolores Price  
Save Mount Diablo, "keep up the good work"  
Marcia Matthiesen  
Shawn & Micheline Willis' Wedding  
Joyce Willis  
Douglas & Carol Willis

Contributions listed on these pages were made from August 1, 2002 thru January 24, 2003. We thank and appreciate these generous donors.

## In Memory of

Raffaella Agostino  
Aida Peterson  
Robert Baldwin  
Joyce Kelly  
Melvin Borges  
Virginia Heiderick  
Rose McKinnon  
Vivian & Marlowe Boyd  
Mary Cabral  
Joyce Kelly  
Wanda Carmona  
Ben Dishman  
Paula Carmona  
Inez Scheller  
Annette Cathcart-Reid  
Marian Booth  
Grace DeBoice  
Joyce Kelly  
Stephen Robert DeChene  
William Ortmann  
Lucia Chih  
Thad & Mabel Haley  
Barbara Ward  
Charles & Judy Allton  
Jon Ericsson  
An Mari Ericsson  
Anna Ferri  
Larry Ferri  
Betty Goldstein  
Diana Bunting & Modesto  
Piazza  
Frank & Edith Valle-Riestra  
Ruth Foster  
Rose McKinnon  
The Walnut Creek  
Creakers' Softball Players  
Carol Larson  
William & Barbara Smith  
Armand & Marylye  
Johnson  
Harvey & Donna Brosler  
John & Thelma Dana  
Jean Hauser  
Barbara Hauser  
Marcy Dubow Howard  
Philip & Henrietta Dubow  
Thorne Holmes  
Virginia Holmes  
Larry M. Ives  
June Wall  
Lester M. Johnson  
Don Laston & Family  
Harry Locklin, Our Dad  
Linda Locklin  
Molly Locklin  
Dave Locklin  
Mark Locklin  
Sherrill Locklin-McGrane  
Paul Locklin  
Glen London  
Joan London  
Frank Loomis  
Mr. & Mrs. Ervin  
Rodemsky  
Evaughn Manning  
Charles & Marjorie Evans  
Heinke Martin  
Ursula Londahl  
Ruth May  
Jim & Judy Gillivan  
Irma Merryman  
Don & Gladys Laston  
Hank Moises  
Richard & Patricia Locke  
Katherine Plummer  
Kimberly Brandt  
Robert & Susan Chandler  
Earl & Gloria Emelson  
Mary Nesbit  
Don & Gladys Laston  
Richard Nugent  
Mary Tang  
John E. Osher  
Peggy Osher  
Bob Otten  
J. Lemmons  
Richard Victor  
Melvin & Lois Decker  
Janet Decker  
Jerry & Donna Hoeg

Samuel & Barbara Berghorst  
Bert Peterson  
Aida Peterson  
Marc Pritchard  
Marvin & Carolyn Schick  
Dale Rostomily  
Diane Burton  
Galen & Barbara Rowell  
Larry Ferri  
Bill & Genevieve Sattler  
Henry Segrove  
Helen Schmitt  
Marjorie & Charles Evans  
Charlie Schroers  
Norma Alexander  
Edith Marie Shirling  
Joan Allen  
Bruce Smith  
Kathleen Smith  
Mildred Statter  
Mr. & Mrs. W. R.  
Sickenberger  
Carl Whitnell  
Paul & Elizabeth Baxter  
Malcolm Williams  
Valerie Mark

## In-Kind Gifts

Dave Luczynski &  
Dina Colman  
IBM Notepad &  
Gateway CPU  
Timothy Colman, Publisher -  
Good Nature Publishing Co  
200 prints "Native Grasses  
of California"

## Land Fund

Paul Aiello  
Tom & Carole Allen  
Rollin & Millie Armer  
Michelle Azimi  
Lee & John Ballesteros  
Henry Beede  
Leslie Belsher  
Kory Bennett  
Kim Bhatt  
Robert Blatner, Jr  
Bill & Francoise Boden  
Jeff Boers  
Mary Bowerman  
Jeri Brown  
Erica Caillouet  
Laura Carmody  
Ellie Castillo  
Reno & Shea Cervelli  
Reesa Cheatle  
Johnson & Louise Clark  
Charitable Foundation  
Daphne Colacion  
William & Ruth Collins  
Peter & Clare Coussoulis  
Ivy R. Danforth  
Vickie Dawes  
Michael DeMicco  
Leslie & Sydney Dent  
Conrad & Shirley Diethelm  
Fernando & Carmen Dos  
Santos  
Mark Edgren  
Marci Elwess  
Edward & Debra Erhardt  
John & Betty Estrada  
Charles & Marjorie Evans  
James & Greta Factor  
David & Charlotte Faletti  
Linda Faulkenberry  
Cheryl & Steven Ferguson  
Nina & Michael Fluss  
JR Franklin  
Tore & Else Fridolfsson  
Bernadette Garcia  
Gary & Judith Ginder  
Joseph & Thelma Giovannoni  
Elizabeth Girgich  
Bruce J. Granicher  
Francine Greiner

## Spotlight on Volunteers



### Doug Knauer

Doug, Director of Sales Initiatives at Levi Strauss & Co. and a member of SMD's Development Committee for several years, joined our Board of

Directors in January 2002, and became Secretary of the Board this year. Doug has been a huge help with events and in seeking financial sponsors. He's helped with Four Days Diablo and even gone so far as to serve as auctioneer at SMD's Moonlight on the Mountain 31st Anniversary. An economics graduate and Masters recipient from UCLA, Doug also participates in Habitat for Humanity, Christmas in April, and Season of Giving, a Levi charity event.

"Diablo is where I bicycle and the mountain is both beautiful and always changing. I got involved with Save Mount Diablo because of my love of the outdoors. I asked a ranger what was the most active organization in the area, was handed an SMD newsletter, and the rest is history," said Knauer, who lives in Danville. His wife Jennifer Babineaux is a full time veterinary student at U.C. Davis.

### David Trotter



Dave also joined SMD's Board in January 2002 after serving on the Development Committee. An attorney at Bowles & Verna LLP, Dave has been dynamic at developing financial sponsors for SMD events and programs. He graduated from Occidental College and received his J.D. from Stanford Law School. For seven years he served on the Moraga Planning Commission, was a Director and President of the Moraga Historical Society, and on the town's Chamber of Commerce. He is a Director of the Lassen Park Foundation, and a youth basketball coach.

"I joined SMD because I appreciate the organization's work, and for my children. I strongly support SMD's goals and vision of preserving open space and lands in and around the mountain, for the benefit of future generations. I want to help continue what has been an excellent record of success." Dave lives in Moraga with his wife Debbie and their four children, Andy, Emma, Jack and Patrick.

## Volunteers

If you would like to volunteer with Save Mount Diablo, call 925 947-3535. We especially need help in distributing our Diablo Watch newsletters to various places two times per year, and in helping to secure new locations to distribute the newsletter.

Jean Hand & John Dulac  
Susan Hanson  
Veronica Harrington  
Doug Higbee  
Marilyn Holloway  
Alex & Debbie Imholz  
Carol James  
Michael Johnson  
Jane Jolivet  
John H. Kiefer  
David & Lisa La Bean  
Terry Lakin  
Stephanie Lattuca  
Lillian H. Lemon  
Fortunata Leon-Guerrero  
Claire Leseberg  
Robert & Diana Londerville  
Jann Louvau & Jay Otvos  
Gerrit & Ardith Louwerens  
Gregory Low  
Terrence Mackin  
Karel Mandagi  
Cliff Marchetti  
Michelle Martin

James Marvin  
Sandra Mata  
Patrick & Susan May  
James & Emily McCormick  
James & Erlinia McGuire  
Rose McKinnon  
Gayle Mennillo  
Virginia Meserole  
Daphne L. Miller  
Moraga Garden Club  
Eric Moss  
Milford Munson  
John & Constance Ormond  
James Pacquer  
Russell Palacio  
Frank & Julieanne Palermo  
Marianne Pedrazzi  
Aida Peterson  
Antone & Mildred Peterson  
Elwin Peterson  
Jennie Phillips  
Christine Schmidt (Plant  
Décor)  
Terese Pollock  
Teresa Ramirez

## Wish List

Can you donate the following:

- Combination TV/VCR
- Power Point projector
- High resolution, large screen computer screen for graphics editing
- Phone system (4 line/6 phone) for SMD office

Timothy Reardon  
William M & Annette Russell  
Wayne & Kathleen Sanburg  
Matthew Schaefer  
Maxine Schmidt & Valerie  
Schmidt -Pomerantz  
Janine Senior  
Ronald Servin  
Richard & Sherry Shandrew  
Shelley Snyder  
Charles & Dora Starkey  
Sherry Starks  
Mike & Pam Stenberg  
Anne Stevens  
Richard Straub  
Magtangol & Lisa Tan  
Steve & Jane Tanner  
Arthur & Nancy Tellez  
Larry Thompson  
William Towns  
Larry Tracey  
John Waggoner  
William & Elizabeth Walsh  
Don Wheaton  
Andrea Zuur

## 2002 Mountain Star Awards

### Robert Doyle Mountain Saver Award for Lifetime Achievement

As a teenager Robert Doyle was a founding member of SMD's Board of Directors. He began as a laborer for the East Bay Regional Park District while living in the State Park's Hetherington cabin. Today Bob is Assistant General Manager of Land Acquisition, Interagency Planning, Environmental Review and GIS, and Regional Trails for the East Bay Regional Park District. His first love has always been Mt. Diablo, however. He served as President of SMD for eight years and works with the organization on a daily basis. He helped create three of Diablo's regional preserves and has been involved in many of the land use issues participated in by SMD. In the past thirty years no one has had a bigger positive impact on the preservation of the East Bay's open space.

### Roger Epperson Mountain Star Award for Stewardship

Roger Epperson is Superintendent of Black Diamond Mines, Morgan Territory and Round Valley Regional Preserves, three of the East Bay Regional Park District's largest and fastest growing parks. Many Park Superintendents might be opposed to an increasing workload in a time of budget constraints but Roger has always been one of SMD's biggest cheerleaders, aiding in acquisition projects, events and land use efforts. He has also been responsible for careful management of his parks and their resources, from repair of the tombstones at the Rose Hill cemetery to careful use of grazing and other management tools. Because of his efforts and those of his staff, these three large preserves enjoy increasing ecological health.



Robert Doyle (upper left) receives award for lifetime achievement from SMD's Seth Adams. Roger Epperson (lower left) receives award for stewardship from SMD's Ron Brown.

## Land Use Around Mount Diablo

Save Mount Diablo responds to nearly every development project proposed around Mt. Diablo. We also work on significant policy issues which might impact or benefit the mountain, such as the County's tightening of the Urban Limit Line several years ago. Below are four issues of huge importance.

### Sand Creek Plan (FUA#1)

In the Fall 2002 *Diablo Watch*, we included an insert about Antioch's proposed 5000 unit Sand Creek Specific Plan (FUA#1), which includes a business park, impacts Black Diamond Mines Regional Preserve, and adds more than 143,000 new car trips per day to area traffic. During the summer Antioch released a draft Environmental Impact Report, with the intent to approve the project at the end of 2002. When more than a thousand residents expressed their concern with letters and postcards, and after many letters in response to the EIR, the city delayed their consideration until early Spring 2003. We'll keep you posted.

### Los Vaqueros Expansion

The Contra Costa Water District (CCWD) completed 1600 acre Los Vaqueros reservoir in December 1997. CCWD was required to acquire 18,500 acres of watershed, relocate Vasco Road, protect Vasco Caves with EBRPD and limit the reser-

voir's size. The reservoir had barely begun to fill when CCWD began planning for an expanded regional reservoir, to serve other water agencies. The existing dam would be torn down, and a larger one constructed. Three times as much land would be flooded and the reservoir's length and width would double - a dramatic barrier to wildlife movement. SMD serves on the Ratepayers' Taskforce and is considering proposed impacts and benefits.

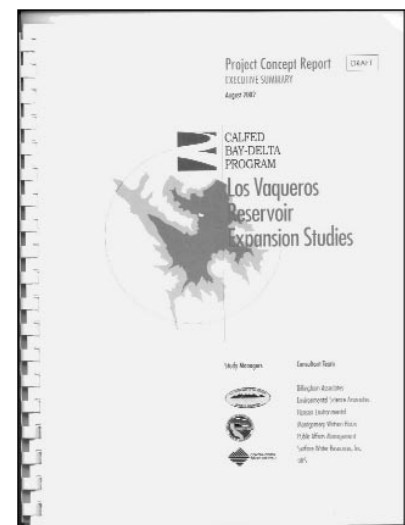
### Shaping Our Future

Throughout the nation, planning agencies are considering ways in which to facilitate "Smart Growth" to encourage more efficient development, near transportation where services already exist and where there are fewer impacts. Contra Costa County and the County's cities have sponsored a regional planning study called "Shaping Our Future." SMD is monitoring the effort with others to ensure that future development plans are located in the right places and balanced with preservation.

### Measure C - Transportation Sales Tax & Growth Management

In 1988 Contra Costa County passed a half cent sales tax addition for transportation projects. It passed on a second try, in part

because it was a companion to the East Bay Regional Park District's \$225 million AA open space measure and because it included a growth management plan. AA has been a huge success, while Measure C's growth management policies are considered a resounding failure. The tax must be reauthorized by 2008. SMD and a coalition of environmental, social justice and labor organizations have participated in the measure's planning in hopes of increasing dollars for open space mitigation, mass transit, and to improve C's growth management policies.



## "Moonlight on the Mountain"

### Thanks to Auction Donors

Acne Treatment Clinic, Bay Nature Magazine, Berkeley Repertory Theatre, Sandy Biagi & Sharon Juhnke, Bill Graham Presents/Clear Channel Entertainment, Bowles & Verna LLP, Dr. Lisa Carroll, Ceramics by Rachel Deist, Changes Salon & Day Spa - Walnut Creek, Club Sport of San Ramon, Concord Feed & Pet Supply, Cost Plus World Market, Crow Canyon Country Club, Diablo Valley Personal Fitness Center, Diablo Yoga Center, Disneyland, Father Nature's, Fensalden B&B Inn-Albion, John Finger, Harlequin Gardens, Scott & Claudia Hein, Horse Laundry Service, Stephen Joseph, John Koeberer & Pam Koeberer Pitts, Levi Strauss & Co., Little Home Thai Cuisine-San Ramon & Pleasanton, John & Jill Mercurio, Malcolm Sproul, Mondello's Cucina Italiana-Moraga, Natalie's Creations, Oakland Athletics, Paramount's Great America, Postino-Lafayette, Quivira Vineyards, R-Computer, Rivendell Bicycle Works, San Francisco Giants, Scott's Seafood, See's Candies, Shirley Williams, Shoreline Amphitheatre, Six Flags Magic Mountain, The Masquers Playhouse Inc., The Storyteller-Lafayette, David Trotter, Wild Bird Center-Walnut Creek

### Thanks to Financial Donors

Daniel & Carol Altwarg, Edward & Mildred Bennett, Bowles & Verna LLP, Sandra Bozarth, Diane Brown, Linnea Burnette, Carl Dinerman, Rudolf Glauser, Liede Marie Haitsma, Randall & Anastasia Hobbet, William & Susan Miller, Yolanda Moreno, Maynard Munger, Bob & Shirley Nootbaar, David Ogden, Tom & Elizabeth Piatt, Leanne Sanderson, Edward & Julie Sattler, Arlene Scoles, Jean Siri, Alan & Mary Louise Smith, John Sproul, William & Ruth Stone, Jeanne Thomas, Susan Watson, Stuart & Kim Weinstein, Nancy Wenninger, Bev & Phil Winslow, Betty Zilen



Bob Doyle points out one of the smaller wind caves at Vasco Caves, known for vernal pools, cultural artifacts and rich biodiversity (Scott Hein)

## Special SMD Events: Save the Date

**Saturday, March 15 Vasco Caves Limited** to 30 donors at the Diablo Donor level and higher (*will receive special invitation*)

**Saturday, March 29 Vasco Caves Limited** to 30, E-news recipients get first notice (*see the Spring on Diablo schedule*)

**Saturday, April 19 Joseph Galvin Ranch Preview** (*see the Spring on Diablo schedule*)

**Sunday, April 20 Chaparral Spring & Heritage Tree Day** (*see the Spring on Diablo schedule*)

**April 24-27 Four Days Diablo - Limited** to 20, \$750 per person (*see page 3*)

**Saturday, May 10 Joseph Galvin Ranch Preview Limited** to donors at the Diablo Donor level and higher (*will receive special invitation*)

**Saturday May 17 Silva Ranch Dedication** (*invitations will be mailed to members*)

**Sunday, June 1 Mt. Diablo Trail Adventure** 10k race or hike (*see page 3*)

**Saturday, September 13 "Moonlight on the Mountain"**, Save Mount Diablo's 32nd Anniversary, to be held at the China Wall, Mt. Diablo State Park (*see page 4*)

## Save Mount Diablo's Mission . .

To secure through acquisition and preservation, the open space necessary to support the full range of biological diversity and to insure the integrity of Mt. Diablo's natural beauty.

Founded in 1971, Save Mount Diablo has been instrumental in increasing open space on and around the mountain from 6,788 acres to more than 81,000 acres.

*In support of our mission, Save Mount Diablo:*

- Creates dedicated open space from land acquired through gifts, purchases & cooperative efforts with public and private entities;
- Educates the public about threats to the mountain;
- Works with landowners to preserve their property while realizing economic benefits;
- Works in partnership with Mt. Diablo State Park, East Bay Regional Park District, and other organizations to increase open space;
- Monitors land-use planning;

- Aids in the restoration of habitat and preservation of rare species;
- Offers technical assistance to agencies and neighborhood groups with regard to securing open space;
- Works diligently to raise funds necessary to support Save Mount Diablo's mission.

**Contact Save Mount Diablo at:**  
925-947-3535, Fax 925 947-3603  
[www.savemountdiablo.org](http://www.savemountdiablo.org)

**s a v e MOUNT DIABLO**

**1196 Boulevard Way, Suite 10  
Walnut Creek, CA 94595**

**Address Service Requested**

**Non-Profit  
Organization  
U.S. Postage Paid  
Concord, CA  
Permit No. 525**