

# Diablo Watch

Fall/Winter 2016 No. 62

Partnerships  
Mount Diablo Buckwheat  
Conservation Collaboration  
Concord Naval Weapons Station

**45**  YEARS  
*of collaboration*

# Diablo Watch

Fall/Winter 2016 No. 62

Partnerships  
Mount Diablo Buckwheat  
Conservation Collaboration  
Concord Naval Weapons Station

**45** YEARS  
*of collaboration*

# Letter from the Executive Director

## Board of Directors

Scott Hein, *President*  
 Burt Bassler, *Treasurer*  
 Amara Morrison, *Secretary*  
 Heath Bartosh  
 Joe Canciamilla  
 John Gallagher  
 Liz Harvey  
 Claudia Hein  
 Bob Marx  
 Sue Ohanian  
 Malcolm Sproul  
 Jeff Stone

## Staff

Ted Clement  
*Executive Director*  
 Seth Adams  
*Land Conservation Director*  
 Jim Cartan  
*Stewardship & Outreach Coordinator*  
 Caleb Castle  
*Communications Manager*  
 Hidemi Crosse  
*Bookkeeper*  
 Karen Ferriere  
*Assistant Development Director*  
 Juan Pablo Galván  
*Land Use Manager*  
 Shannon Grover  
*Development Associate*  
 Dana Halpin  
*General Office Manager*  
 Meredith Hendricks  
*Land Programs Director*  
 Nicole Murphy  
*Executive Assistant*  
 Kristen Noe  
*Development Associate*  
 Monica Oei  
*Finance & Administration Director*  
 George Phillips  
*Land Conservation Manager*  
 Jennifer Ramirez  
*Accounting Associate*  
 Deborah Toll White  
*Development Director*

Dear Friend of the Mountain,

This year, Save Mount Diablo celebrates forty-five years of caring collaborations and relationships that have produced important and lasting conservation successes for our beloved mountain, its natural surroundings and the larger Bay Area community. This thoughtful coming together, based on shared love and gratitude for these irreplaceable lands, is also the way forward and how we will achieve additional conservation successes for the benefit of current and future generations.



Ted Clement, SMD's Executive Director and Robert Doyle, General Manager of the East Bay Regional Park District (EBRPD) with Las Trampas Regional Wilderness-EBRPD behind.

When Save Mount Diablo (SMD) was founded in 1971, the mountain was home to just one 6,788-acre park, Mount Diablo State Park. Today, as a result of SMD, our wonderful partners (individual supporters, governmental agencies, foundations, local businesses, etc.), and our collective appreciation of this place, there are more than 40 parks and preserves around the mountain, totaling over 110,000 conserved acres—one of the Bay Area's most significant assemblages of natural lands and wildlife habitat.

This issue of Diablo Watch acknowledges and celebrates many of our partners—such as the East Bay Regional Park District, California State Parks and the East Contra Costa County Habitat Conservancy—and our collective accomplishments over the past forty-five years while also looking forward.

To further our success of protecting the Mount Diablo area, and the roughly 70,000 acres at risk, we must grow our partnerships and people's connections to these wild lands as love is the basis for good stewardship. Several new programs and efforts, a number of which are written about here, will help us do that: our new Conservation Collaboration Agreement program with local schools; our new free public hiking series known as Discover Diablo; and our new membership program, known as Friends of the Mountain, which has a special new youth membership category.

We are grateful for you and all you have helped us accomplish over the past forty-five years. Together, combined with new partners, we will take our time sensitive land conservation mission for the Mount Diablo area even further—creating more public benefits that will last for the next forty-five years and well beyond!

With Gratitude,

Edward Sortwell Clement, Jr.  
 Executive Director  
 Save Mount Diablo



Ted Clement, Executive Director of Save Mount Diablo accepts the 2016 California Non-Profit of the Year award for Assembly District 16 from Assemblywoman Catherine Baker.



## Partnerships Are Essential - But How Do Ours Really Work?

**How do we go about the business of saving the mountain?** What exactly is it we are saving these days? Our land conservation work is an effective but convoluted mix of land use advocacy, policy and legislation, acquisition, stewardship and education—we depend on strong working relationships with our partners for all of it.

But how do our partnerships with the California State Parks, the East Bay Regional Park District (EBRPD) and the East Contra Costa County Habitat Conservancy (Habitat Conservancy) actually work?

As with any set of relationships worth having, it's complicated.

A few years ago I took a call from a property owner out on Marsh Creek Road who wanted to sell the family land but the family also wanted it to be preserved. Were we interested? Yes.

**“A handful of volunteers started with a modest following and a huge goal: to protect Mount Diablo and its foothills.”**

Through the process of securing an option to acquire the property that allowed us time to raise the money to buy the ranch, we got to know the Hanson family and learned about the land their family lived on for over 100 years. The Hanson children, now all in their eighties, remember fishing for

steelhead in Marsh Creek on SMD's Big Bend property and camping out on warm nights atop their pyramidal peak with its 755-foot picture perfect views of Mount Diablo. By the spring of 2015 we raised the funds and closed escrow on the property. We then turned our attention to securing it forever by working with our partners at EBRPD and the Habitat Conservancy to transfer Hanson Hills into the regional park system.

Located outside the Urban Limit Line and in the middle of the target area called out for preservation by the Habitat Conservancy, Hanson Hills just became the newest addition to EBRPD's Deer Valley Regional

*Continued on next page...*

### Meet Our New Board Members

*We are pleased to welcome our newest Board members to Save Mount Diablo.*

#### Liz Harvey



Liz Harvey, Certified Fund Raising Executive (CFRE), has 30 years of experience in Bay Area philanthropy and is able to connect her love of the outdoors with her concern for the environment. She grew up in Alamo looking at Mount Diablo from her backyard. She now lives in Danville, and loves running, camping, kayaking and hiking. Prior to joining the Board, Liz was an active SMD supporter by participating in and raising funds for our events.

#### Bob Marx

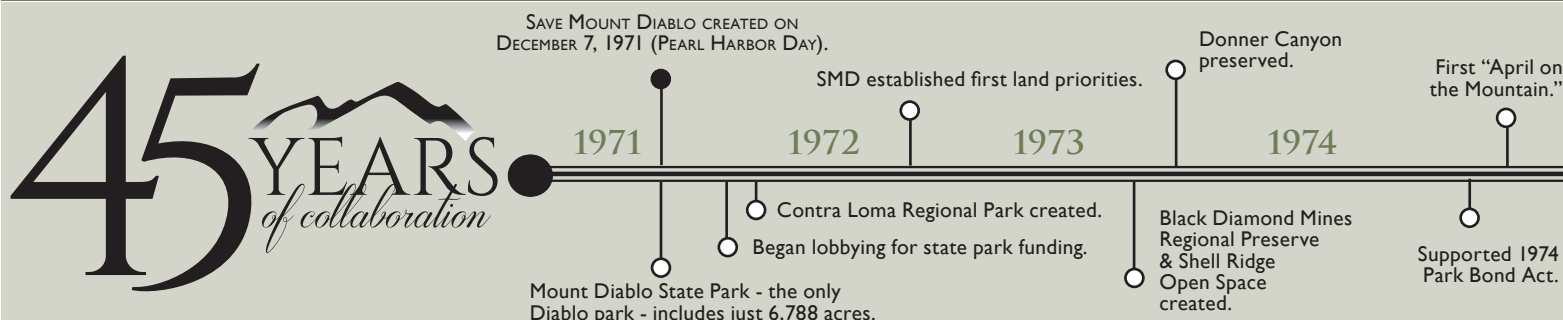


We welcome Bob Marx back to our Board! Bob was a Board member from 1997–2004. Bob and his wife Joan own Summit Ranch in Alamo, which borders Mount Diablo State Park. Bob is a longtime equestrian who is frequently out on the trails of Mount Diablo. He also proposed our largest fundraiser, Moonlight on the Mountain, to be held at the China Wall above Summit Ranch. Bob's love and appreciation of Mount Diablo goes beyond words!

#### Jeff Stone



Jeff graduated from UCLA with B.A.'s in Political Science and Communications, and a J.D. from UC Davis, King Hall. Following law school, Jeff went back into the family construction business, Diamond Construction, based out of Lafayette. Jeff has expanded the business and now focuses on construction, transactional real estate, and development. Jeff and his wife Lauren were married last year at the summit of Mount Diablo, as they both love the mountain and the outdoors!



“In the past 45 years, there has been  
**AN INCREDIBLE SUCCESS STORY**  
here in the East Bay.”

## Partnerships - Cont'd

Preserve last spring. Here is how the deal worked—the bulk of the funds for the purchase from SMD came from the Habitat Conservancy’s grant funds, with the rest provided by EBRPD using Measure WW money. The Habitat Conservancy staff sought the necessary approvals from its Governing Board, as well as from state and federal wildlife agencies. EBRPD moved the project through their Board of Directors in parallel. SMD agreed to sell EBRPD the property for appraised fair market value and used the proceeds of the transaction to invest in other conservation lands.

SMD purchased the property knowing it was within the priority habitat areas for the Habitat Conservancy and the recent expansion work of EBRPD in the Deer Valley area. The sale of Hanson Hills to EBRPD makes a protected north-south habitat corridor (from Roddy Ranch to Marsh Creek) one step closer to completion. It also replenished SMD’s acquisition funds so that other land could be preserved.

“Save Mount Diablo staff have built relationships in the region with landowners who are interested in

seeing their ranches and family lands conserved. SMD staff are also effective working with partner agencies like EBRPD and the Habitat Conservancy to secure funding and to help property owners sell their land and know that it will be conserved. The Hanson Hills acquisition is the most recent property in a long line of successful conservation

EBRPD. Doyle notes that, “In the last 45 years, there has been an incredible success story here in the East Bay. I was lucky to be a part of Save Mount Diablo’s early creation. A handful of volunteers started with a modest following and a huge goal: to protect Mount Diablo and its foothills.”

He adds, “Today, eight Regional Parks surround Mount Diablo State Park, forming an incredible landscape of protected and connected parklands. This has been a lasting legacy of the many partnerships Save Mount Diablo has worked so hard to make happen. Much has been accomplished working together.”

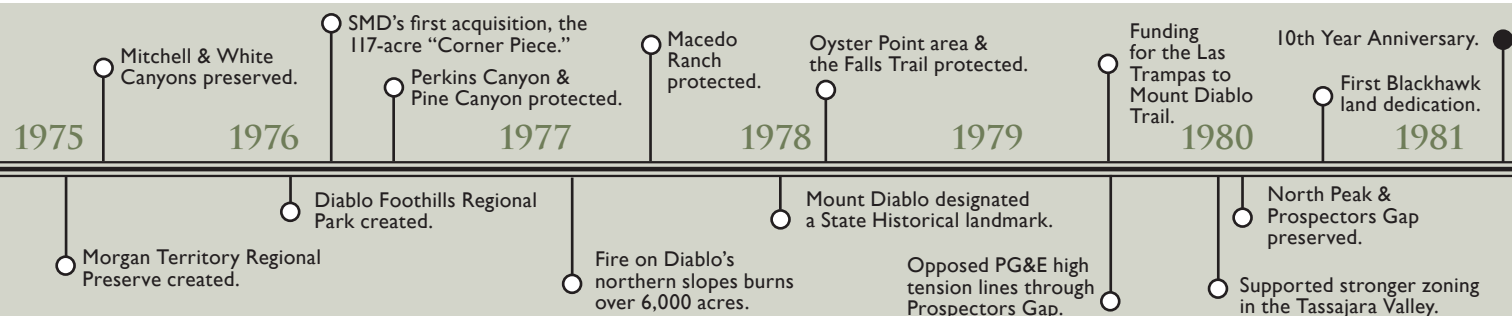
More recently, the East Contra Costa County Habitat Conservancy was launched in 2008 (after a 10-year planning effort) and directs mitigation funding, leveraged with conservation funding for acquisition, restoration and management of up to 30,300 acres of the lands we care about. The Habitat Conservancy provides streamlined endangered species and wetland permitting for development and infrastructure projects in exchange for collecting fees for those projects. The Conservancy also raises grant funds, allowing for a more holistic approach



Signing of the East Contra Costa County Habitat Conservation Plan on Kreiger Peak in July 25, 2007. SMD worked with Contra Costa County, the East Bay Regional Park District, Contra Costa Water District, state and federal wildlife agencies, 4 cities, and many other community stakeholders to create the plan which will help raise \$300 million to protect more than 30,000 acres of wildlife habitat over 30 years.

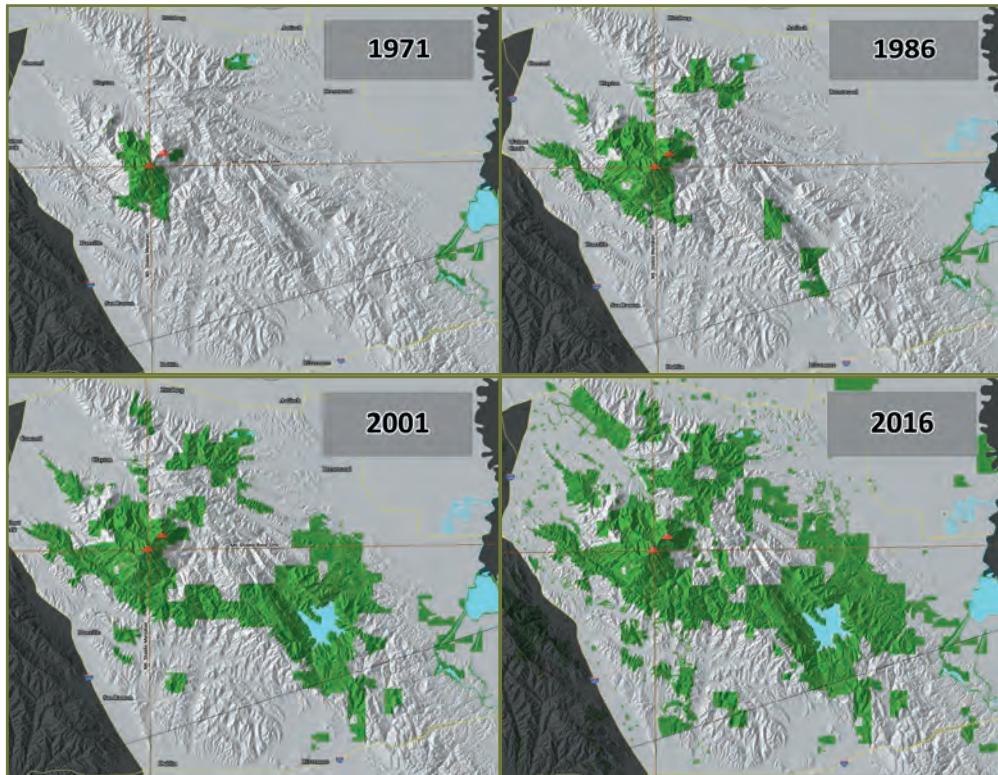
stories,” said Abby Fateman, Executive Director of the Habitat Conservancy.

Remarkably, our partnership with the East Bay Regional Park District dates back 45 years because one of our founding board members was Robert Doyle, now the General Manager of the





“This has been  
**A LASTING LEGACY**  
of the many partnerships...”



In 1971, there was just one park on Mount Diablo. Working first with partners such as State Parks and Contra Costa County, then with the East Bay Regional Park District, and cities, the Coastal Conservancy, the East Contra Costa County Habitat Conservancy, Contra Costa Water District – we and our allies have pieced together an expanse of Diablo wild lands that is greater than 110,000 acres, an area bigger than Point Reyes National Seashore or the Golden Gate National Recreation Area.

### PROTECTED LAND: 1971 TO 2016

to mitigation and conservation on the east side of the mountain.

SMD was at the table helping to create the Habitat Conservation Plan/Natural Community Conservation Plan and to define the habitat priorities. Many of the goals of the Habitat Conservancy are enacted in concert with our mission.

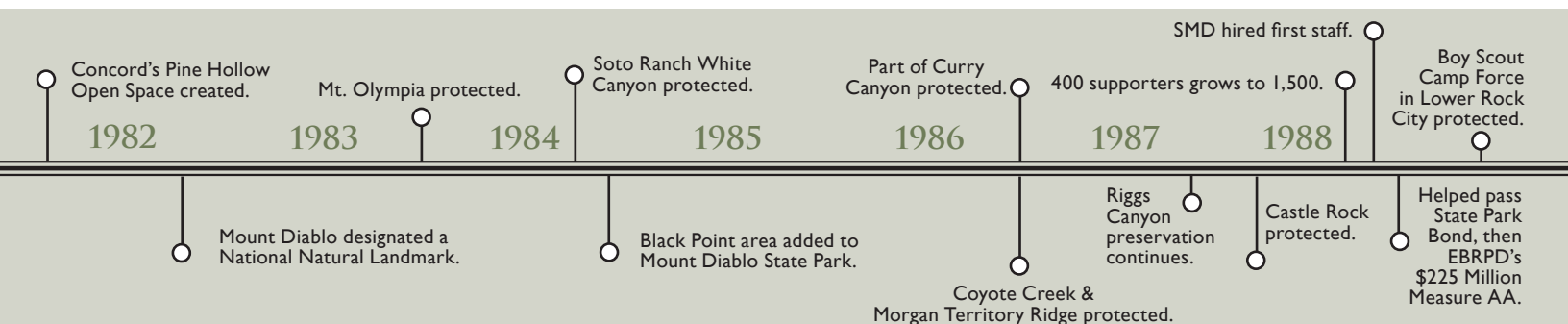
According to Fateman, “Save Mount Diablo was active in the stakeholder process during Plan development. They were at the table with the development community, agriculturalists, and local residents to help shape the Plan’s conservation strategy. As the process moved from planning to implementation, SMD continued its engagement on

the Habitat Conservancy’s Public Advisory Committee and is a valuable implementation partner.”

Although regional parks have expanded rapidly, it has been over ten years since land was added to Mount Diablo State Park and while we hope that changes soon, our efforts over that time have been focused on supporting research on the mountain and on funding for the park system, primarily through efforts at the ballot. We worked behind the scenes this summer on a park bond proposal that ultimately never made it to the Governor’s desk but which should be revived by the legislature next year. We have also provided support to the park itself, including partially funding the new volunteer coordinator and renovating the historic beacon on the summit.

“Our long-standing partnership with Save Mount Diablo was born while acquiring important lands for Mount Diablo State Park. These critical landscapes provide necessary space for unique and significant species which are only found in this region.” said Danita Rodriguez, Superintendent of the Bay Area District for California State Parks. She continued, “Our current relationship goes beyond acquisitions as Save Mount Diablo supports our volunteer program; provides connections with subject

*Continued on page 10...*



# Mount Diablo Buckwheat

## Critically Endangered Wildflower Discovered Near Antioch

Scott Hein

Thanks to a team of botanists contracted by the East Bay Regional Park District (EPRPD), the endangered Mount Diablo Buckwheat was identified as thriving at Black Diamond Mines Regional Preserve in Antioch, California.



Save Mount Diablo board member Heath Bartosh, (left) and Brian Peterson (right) amidst a field of rare Mount Diablo Buckwheat wildflowers that they rediscovered in May of 2016. This location is being kept a secret to protect the species.

there were only 20 plants at a single spot in the entire world. Locating the plant has been “the holy grail” for East Bay botanists and news of the rediscovery spread quickly.

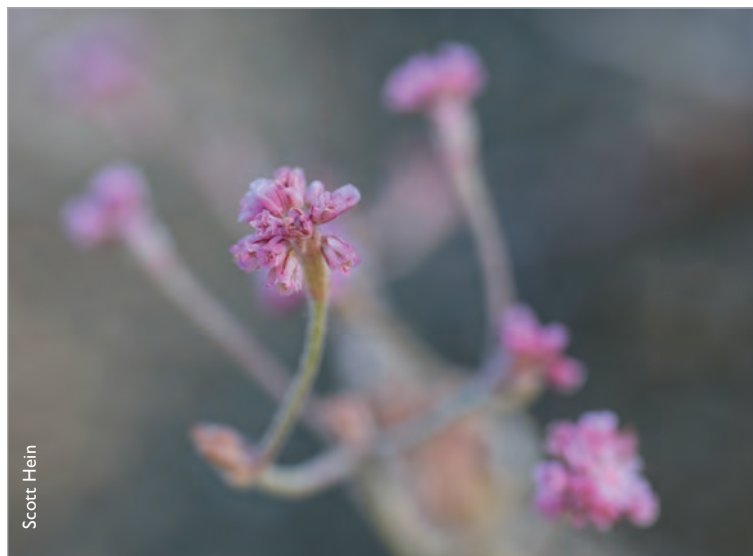
Save Mount Diablo is a member of the Mount Diablo Buckwheat Working Group which has been actively searching for the rare plant since it was first rediscovered at Mount Diablo in 2005.

After the 2005 rediscovery, seeds were collected and camera traps installed to monitor the wild population. Beginning in 2006, plants were propagated at UC Botanical Garden at Berkeley. Seeds are stored in multiple seed banks. Efforts made to increase the population at Mount Diablo have been challenging, but were successful in increasing numbers even

during repeated years of drought. The discovery site was kept secret to protect the species.

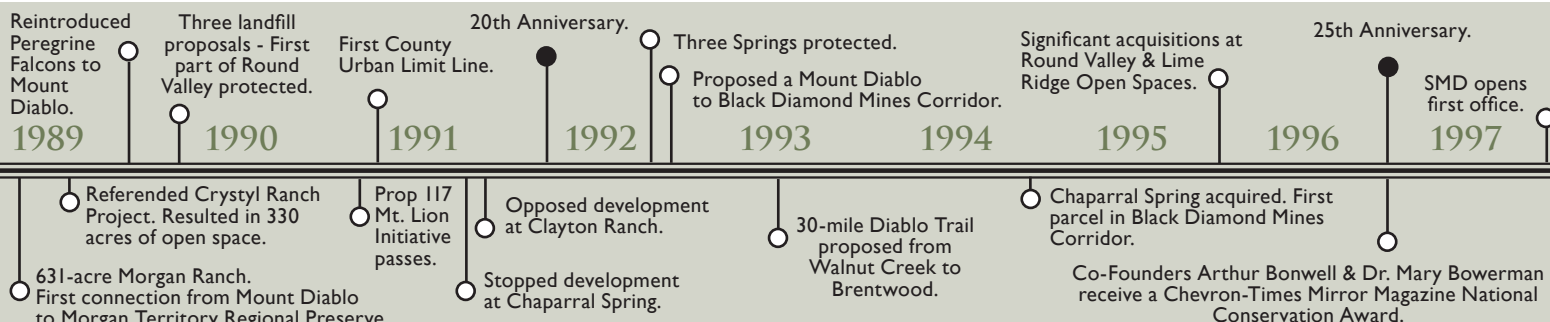
Habitat was mapped and explored over the next ten years but no additional populations of the plant were found. There was just one location for the critically endangered plant, on the brink of extinction, with just 100-200 plants.

Until this May, when the two botanists found a second population. Unlike the sparse population of 100-200 plants at Mount Diablo, the new discovery site was estimated to include approximately 1.8 million plants—but in just two patches totaling a half acre.



Close up image of the Mount Diablo Buckwheat (*Eriogonum truncatum*), 2016. Locating the plant has been “the holy grail” for East Bay botanists.

“I’m so thrilled to share this news, it’s the find of a career.” said Bartosh. “The most recent records of Mount Diablo Buckwheat are from chaparral edges on Mount Diablo. But early California botanist William Brewer, the original



## The plant “could be dramatically affected by East County development pressure.”

discoverer, found it on dry hillsides near Marsh Creek. We recorded this species growing in grassland on highly erosive soils, most likely the same type of habitat Brewer observed. The new information will hopefully lead to the discovery of other new populations.”

“Finding the Mount Diablo Buckwheat in Black Diamond Regional Preserve is exciting,” said Matt Graul, Chief of Stewardship at EBRPD. “The locations are being kept secret to protect the endangered plant and the working group waited until the plants have gone to seed to announce the discovery. The Park District takes our responsibility to be good stewards of this rediscovered treasure incredibly seriously.”

“This plant is so rare botanists haven’t been sure where to look,” said Seth Adams, Land Conservation Director for Save Mount Diablo. “Many references still suggest the species is extinct. On the one hand a second location is good news, but it could be dramatically affected by East County development pressure. Right now, for example, Antioch is considering plans for more than 4,000 houses.”

“THIS PLANT IS SO RARE BOTANISTS HAVEN’T BEEN SURE WHERE TO LOOK.”



Save Mount Diablo co-founder Dr. Mary Bowerman collecting samples from the mountain, 1932. Dr. Bowerman recorded *Eriogonum truncatum* in 1936, the 6th of only 7 known findings (until now). The last known sighting of the Mount Diablo Buckwheat was recorded in 2005.

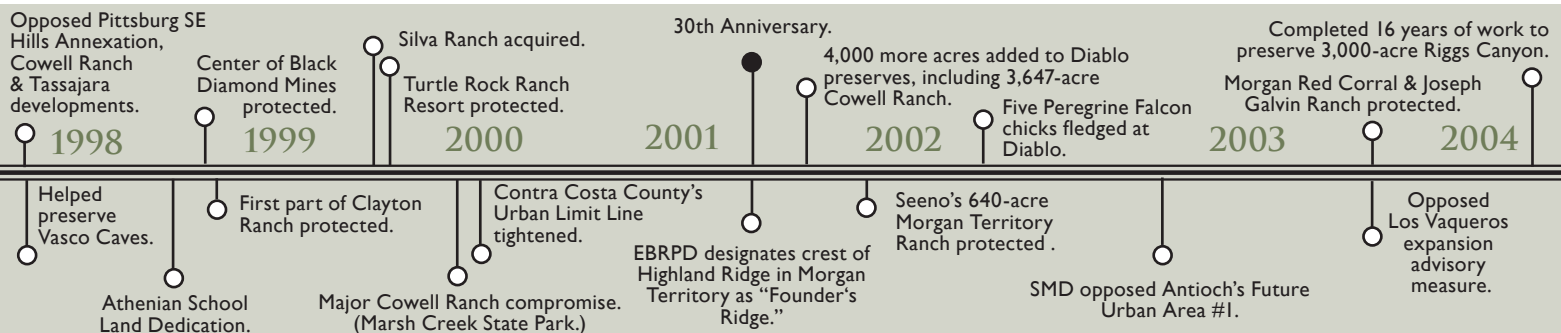
“The Antioch population habitat is quite different from the 2005 rediscovery site, and provides valuable information for efforts to develop new populations,” said Holly Forbes, Curator and Conservation Officer at UC Botanical Garden at Berkeley. “Our efforts to propagate this species at the Botanical Garden and to protect seeds in seed banks are insurance against natural disaster in habitat.”

*Eriogonum truncatum* was first recorded on May 29, 1862 by William H. Brewer on the Mexican rancho acquired by Dr. John Marsh. Over the next 78 years the Mount Diablo Buckwheat was recorded a total of seven times. The second last recording was in 1936, by botanist Mary Bowerman, who later became co-founder of Save Mount Diablo.

Since then Eastern Contra Costa has become a nationally recognized biodiversity hot spot for rare species. The good news is that thousands of acres there have been preserved.

However the area is also threatened by rapid development. Discovery of a second population of the Mount Diablo Buckwheat edges the species back from the brink of extinction.

By Seth Adams  
Land Conservation Director  
Save Mount Diablo





Ted Clement

# Save Mount Diablo Launches New Program with Local School on Earth Day

On April 22, 2016, Earth Day, Save Mount Diablo (SMD) had the privilege of signing our inaugural Conservation Collaboration Agreement with Joaquin Moraga Intermediate School (JMIS), a public middle school in Moraga. Its mission highlights preparedness for the future and a life-long love of learning while providing a positive and safe learning environment. JMIS encourages self-development through opportunities to contribute to society at large as well as the local community.

The Agreement acknowledges that the Mount Diablo region’s natural environment is greatly threatened by development and other pressures and that the students of JMIS have a major stake in what their future environment will look like. The Agreement further recognizes that it is important for these students to learn about and directly connect with their natural environment. In this modern and fast paced society which often distracts us from the natural world, it is crucial that environmental education initiatives re-center young people’s curiosity and values to our collective backyard.

Learning how to step up, protect the natural landscape and contribute to community efforts are integral components of the Conservation Collaboration Agreement. By working together, the parties can better help protect the Mount Diablo region while furthering their respective land conservation and education missions. Dawn Lezak, a JMIS teacher, said, “Through the partnership with Save Mount Diablo, Joaquin Moraga Intermediate’s EARTH Class and ECO Club students were able to apply what they learned in school and see how

land conservation works in practice. This experience gave them the opportunity to see how relevant their classroom curriculum is to local conservation and environmental activism.”

The Conservation Collaboration Agreement had three basic parts. First, the staff of SMD provided in-class educational presentations regarding land conservation to the JMIS 6<sup>th</sup> grade EARTH Class and ECO Club. Next, SMD staff taught and led the JMIS 6<sup>th</sup> grade EARTH class and ECO Club in an outdoor, experiential work service project at SMD’s Curry Canyon Ranch property—which also included a contemplative journal writing exercise where students did a 30-minute solo outdoors and reflected on the question of “What is nature and what is my part in it?”

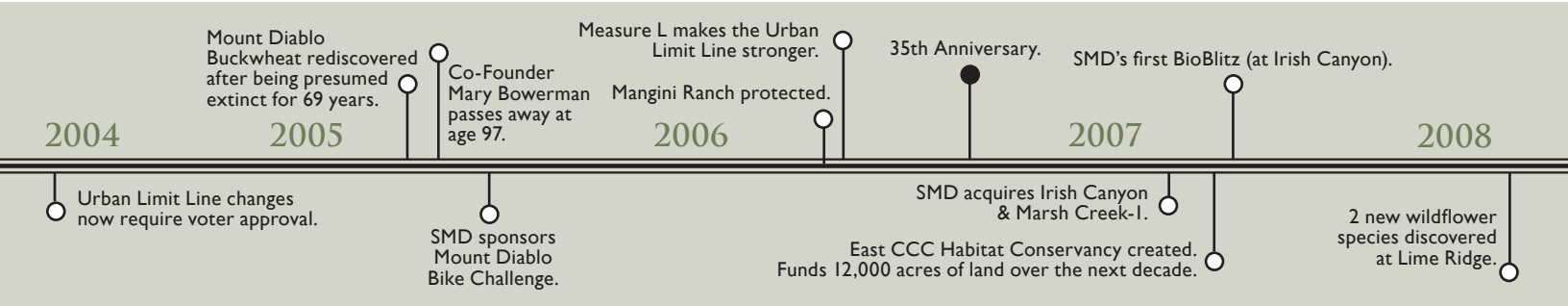


Students and Faculty of the Joaquin Moraga Intermediate School (JMIS) working hard to help steward the land at Save Mount Diablo's Curry Canyon Ranch property.

Finally, JMIS and its participating students raised money to become members through SMD’s new Young Friends Membership Program. Students in the 6<sup>th</sup> grade EARTH Class and ECO Club are directly contributing to the philanthropy necessary to support SMD’s time-sensitive land conservation work, learning that it takes a collaborative, group effort to protect the natural environment we all rely on.

To learn more about SMD’s new Conservation Collaboration Agreement program and how to participate, please contact Jim at [jcartan@savemountdiablo.org](mailto:jcartan@savemountdiablo.org) or 925-947-3535.

By Ted Clement  
Executive Director  
Save Mount Diablo



## The Concord Naval Weapons Station Success Through a Decade of Collaboration

Ten years after we began our work on the Concord Naval Weapons Station (CNWS) Area Reuse Plan, changes to this more than 5,000-acre swath between Concord and Pittsburg south of Highway 4 are starting to happen on the ground. Eventually more than 12,000 housing units are envisioned, and 69% of the area will become protected city parks, greenways and East Bay regional park land. None of the large conservation gains won on this project could have happened without the extensive cooperation and collaboration efforts Save Mount Diablo has engaged in for over a decade.

In 2005, the Navy approved the closure of the 5,046-acre inland area of the CNWS, a landscape of rolling hills, grassland, and oak woodland dotted with bunkers and old railroad tracks. Even before 2005, Save Mount Diablo saw the huge opportunity that this vast area of mostly-undeveloped land represented for wildlife habitat protection and outdoor recreational experiences. We also recognized that others saw great opportunities of a different sort, and that by working together, everyone had a better chance of accomplishing their own separate goals and winning much more than would be possible if everyone went it alone.

In 2007, we joined with Concord residents around CNWS, labor unions, interfaith groups, affordable housing advocates and other environmental organizations to form the Community Coalition for a Sustainable Concord (CCSC). Over the next five years as Concord prepared the Area Reuse Plan, which would be the blueprint for future use of the CNWS, the CCSC worked to make its vision of a vibrant mix of jobs and affordable homes in walkable neighborhoods

surrounded by protected open space become reality.

As a result, when the City adopted the Area Reuse Plan in 2012, over 3,500 acres of land were designated as parks, greenways and open space. Most of this will be a new regional park owned and managed by the East Bay Regional Park District (EBRPD), which is currently finalizing a Park Use Plan for the area. Affordable housing guidelines were also set, greenway buffers between existing residents and new development would be created, good jobs would be

secured and transit-oriented mixed-use development would be built to capitalize on the North Concord BART Station and keep as many cars off the road as possible.

Since 2014 we have played an active role as Concord searched for a Master Developer to start implementing the Area Reuse Plan vision. Lennar was chosen as Master Developer this year. Next, as a Specific Plan is crafted and put into practice over the next few years, our work will focus on making sure that our gains in the Area Reuse

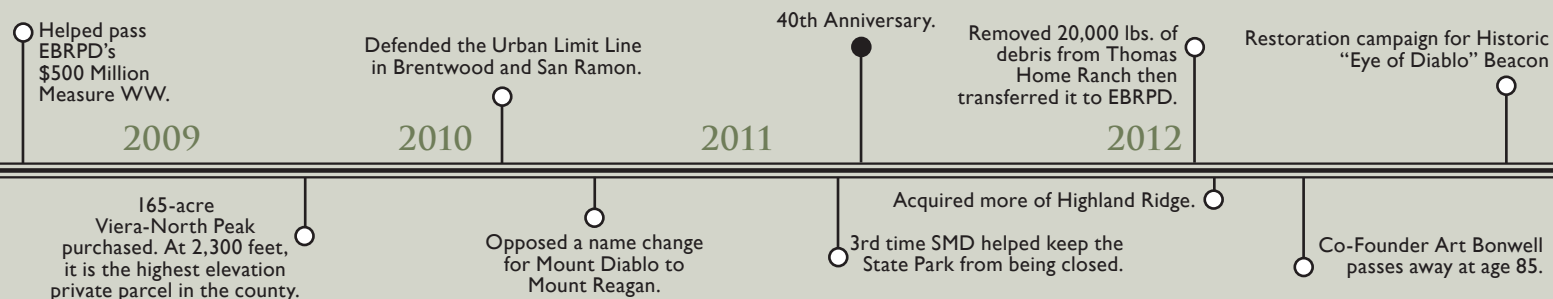
Plan are put into place on the ground. First the Navy must transfer the land to Concord and EBRPD, which could happen for EBRPD by mid-2017. The recent visit by Secretary of the Interior Jewell to the CNWS for the Port Chicago Memorial could speed things up.

Our hope is that we will be successful in the future by doing what has worked so well for us in the past: collaborating with different stakeholders to accomplish goals that benefit our entire community.

By Juan Pablo Galván  
Land Use Manager  
Save Mount Diablo



A huge part of the Concord Naval Weapons Station is slated to be transferred to the East Bay Regional Park District, possibly as early as 2017.





## Partnerships - Cont'd

*Continued from pg. 5 ...*

*"Partnerships are Essential - But How Do Ours Really Work?"*

matter experts while coordinating and sponsoring occurrences such as the Bioblitz and the Pearl Harbor Survivors remembrance event; and restoration of the beacon with substantial political and community support."

Our partnerships and thanks are not limited to these three agencies. We are also very active with a number of other non-profits and volunteer groups, including other land conservation organizations, smart growth, affordable housing and transit groups, and we co-founded the Environmental-Labor

Coalition of Contra Costa County.

It's a little bit like diversifying an investment portfolio. We balance our relationships and work to protect habitat on and around Mount Diablo so as not to rely totally on any one approach. Partnering with diverse stakeholders, including our amazing members and donors, helps us tap into the kind of creative, entrepreneurial thinking needed to preserve land in the face of significant development pressures in the Bay Area.

Together with Mount Diablo Interpretive Association and Lindsay Wildlife Experience, SMD will offer the Diablo California Naturalist

Program beginning in January of 2017, a program of the University of California Naturalist Program. The certification program is designed to allow citizen scientists to help protect and preserve unique ecosystems with a focus on Mount Diablo. Participants will receive training in a number of fields including ecology, geology, resource management and interpretation to bolster their work as volunteers for the host organizations. Volunteers are essential to SMD and we are lucky to have hike leaders and property stewards dedicated enough to become certified naturalists, reinforcing our science-based founding.

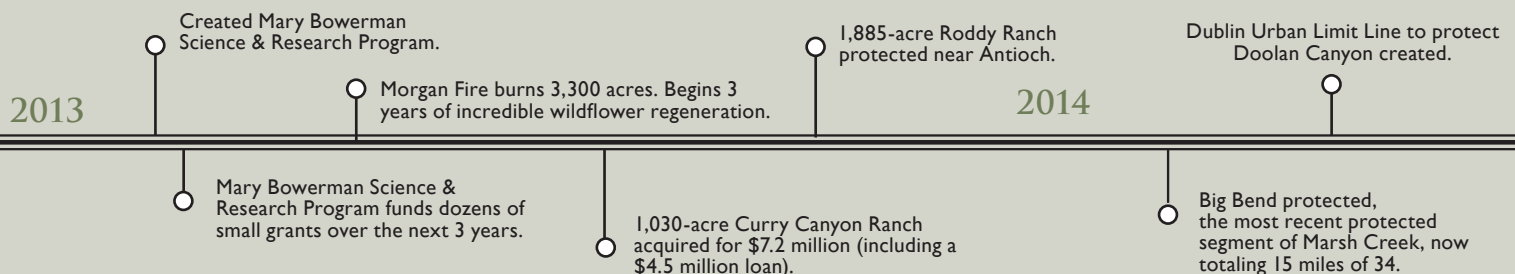
Preserving a mountain, a landscape, is tough stuff. It requires many people all agreeing over and over again that it is the right thing to do. Our partners help us maintain a strong line of defense, preventing vulnerabilities and bolstering our resolve. They work alongside us to restore habitat to give plants and wildlife the best shot at survival.

And in these ways we take care of the mountain together so it is intact for all to enjoy.



Beacon restoration partnership agreement, 2012. Left to Right: Former Director of State Parks Major General Anthony Jackson, former Assemblywoman Joan Buchanan, retired SMD Executive Director Ron Brown, retired Mount Diablo State Park Superintendent Roland Gaebert, State Parks Bay Area District Superintendent Danita Rodriguez.

By Meredith Hendricks  
Land Programs Director  
Save Mount Diablo





## My Mount Diablo

I grew up in Marin County thinking Mount Tamalpais was the greatest mountain ever. When I moved to Contra Costa County in the early 1990's, Mt. Tam was still the best. Then trail running came into my life and through it I began to learn of and appreciate all the nuances of my new home park. There were waterfalls, beautiful flowers and trees, tarantulas and beautiful snakes. The views of Mt. Tam were also gorgeous.

Wildlife of all types must be persistent to exist and flourish on Mount Diablo—sort of like me. So when retirement happened and I wanted to give back to the area for all it had given me, I volunteered to work at the Native Garden and the trail crews in Mount Diablo State Park and somehow found out about the East Bay Trail Dogs and Save Mount Diablo.

On my first day with the East Bay Trail Dogs I was told by the EBTD president that I was too small and couldn't do the work. Well, I have been at it now for nearly five years. Save Mount Diablo has given me lots of opportunities to help make life a bit easier for the wildlife.

Thank you Save Mount Diablo.

**By Carol Lane, Volunteer**

*Carol began volunteering with Save Mount Diablo nearly 5 years ago and is retired. Carol lives in Concord with her husband Larry and their dog Angel.*



## DISCOVER DIABLO

“**Discover Diablo**” is Save Mount Diablo’s new program of free guided public hikes.

One major component of Discover Diablo will be an annual schedule of free public hikes publicized at the beginning of each calendar year.



SMD Land Committee taking a hike at Round Valley Regional Preserve, February 2016.

We will continue to host one monthly property hike, taking place and focusing on a specific piece of land Save Mount Diablo owns and stewards, as well as one monthly family hike.

Family hikes will take place on a collaborating agency’s land and will highlight ecologic features or a designated theme. We will also offer a hike series intended to build certain skill sets or grant access to SMD members exclusively.

The goals of Discover Diablo are building awareness of the importance of land conservation and permanently protecting open space for habitat, as well as recognizing the value of outdoor recreation, reaching new audiences, building our membership base, and sparking passion for wild lands in the youngest of trail blazers.

Stay tuned for the launch of this new program!

*If you have any questions regarding Discover Diablo, please contact Jim Cartan, SMD’s Stewardship and Outreach Coordinator: [jcartan@savemountdiablo.org](mailto:jcartan@savemountdiablo.org).*

**By Jim Cartan  
Stewardship &  
Outreach Coordinator  
Save Mount Diablo**



600,000 lbs. of debris (including 2 entire houses!) removed from Marsh Creek-6 Volcanic Dome.

2015

Replanted Marsh Creek-6 Volcanic Dome.

Former SMD Executive Director Ron Brown retires.

Repowering projects remove thousands of derelict windmills which threaten birds.

Events attended by over 5,000 people.

10 Years working on the Concord Naval Weapons Station.

SMD Executive Director Ted Clement hired.

# Moonlight Reflections



*Thank you for joining us in celebrating our 45th anniversary.*

**THIS YEAR, OUR DONORS AND GUESTS HELPED RAISE OVER \$450,000**  
through ticket sales, the auctions, and sponsorships to protect, restore and defend  
the Diablo wild lands - so we can all enjoy.

*That's amazing and we're so grateful! We can't wait to see you all again next year.*

**Mark your calendar now for Saturday, September 9, 2017.**

## THEN & NOW: MOONLIGHT IN 2002 VS. 2016



"When I suggested we hold the gala at China Wall, a half-mile from Summit Ranch, I got a lot of strange looks. The first MOTM was attended by 120 people. It was a very relaxing, intimate event with a String Quartet and battery lanterns on the tables with a 4-course meal prepared and served by Sunrise Bistro, and they are still doing so today. Mount Diablo State Park and San Ramon Valley Fire District were in attendance and approved of the way SMD put on the event. Around 8 p.m. the full moon rose above Mount Diablo to many cheers and glasses of wine raised in a toast. When I asked all if they enjoyed the event and should we do it again next year, all shouted out 'YOU BET!'.

Fifteen years later, we are still going strong. See you all in 2017!"

- Bob Marx

"The first Moonlight on the Mountain was held in 2002. It was quite the undertaking for such a small staff and group of volunteers who had to do everything—plan the event, invent the art panels, setup, tear-down, clean up, and attend the event, of course! I remember madly stapling the programs together at the last minute. But with around 120 attendees, an acoustic ensemble, battery lanterns on the tables, and dinner served by Sunrise Bistro under the full moon, it inspired us to continue to grow. Today we have a much larger staff and hundreds of volunteers, and the event has grown to support 500+ attendees. Moonlight on the Mountain is such a unique opportunity to celebrate and connect people to our work!"

- Scott and Claudia Hein

2016

Achieved National Accreditation  
from Land Trust Accreditation Commission.

Expanded Conservation  
Buyer Program, including  
use of Conservation  
Easements.

Optioned 88-acre  
North Peak Ranch.

Created and adopted new Rolling  
Three-Year Strategic Plan.

Implemented new  
Conservation Collaboration  
Agreement Program.

Designed and successfully  
implemented strategy to pay off  
loan for historic acquisition of  
Curry Canyon Ranch.

Won 11 out of  
the last 11 ballot  
measures since 2005.

# Thanks to our Moonlight Sponsors & Donors!



Jeanne  
Thomas



CSAA Insurance Group,  
a AAA Insurer



Charla Gabert  
& David Frane



OCCASIO  
WINERY



Tom Steyer  
& Kat Taylor



Bob & Joan  
Marx



LSA

## LIVE AUCTION

**Anonymous**  
**Beets Hospitality Group**  
**Mark & Silvia Belotz**  
**Paul Bonderson**  
**California State Parks**  
**Elaine Coronado**  
**FastFrame**  
**Jim & Bette Felton / Sky Terrace Vineyards**  
**Forbes Mill Steakhouse**  
**Stephen Joseph**  
**Steve & Sue Ohanian**

## SILENT AUCTION

Adventure Cat Sailing Charters  
Artisan  
Artistic Home Interiors  
Asian Art Museum  
Kim Bass  
Bay Nature Institute  
Beach Blanket Babylon  
Beets Hospitality Group

Mark & Silvia Belotz  
Sarah Anne & Matthew Bettelheim  
Bette's Oceanview Diner  
Sandy Biagi  
Blackhawk Automotive Museum  
Blue Waters Kayaking  
Carla Bolotaolo  
Bridges Restaurant & Bar  
Boomers  
Marta Brownfield  
Buddy Burke  
Cache Creek Casino Resort  
Cakebread Cellars  
California Canoe & Kayak  
Canvas and Cabernet  
Paula Carvalho  
Casa Orinda  
Charles M. Schulz Museum & Research Center  
The Cheesecake Factory  
Christesen's Western & English Saddlery

Circles of Colors  
City Lights Theater Company  
Clementine's  
Concannon Vineyard  
Concord Mt Diablo Trail Ride Association  
Cottage Jewel  
Suzanne Darcy  
Congressman Mark DeSaulnier  
Disneyland Resorts  
Verna Dow  
Drake's Brewing Co.  
Ken Dyleski  
Eagle Vines Golf Club  
East Bay Nature  
Eden Jewelry  
Edible Arrangements  
Eight Bridges Brewing, Inc.  
Jim & Bette Felton / Sky Terrace Vineyards  
Fit Spa  
Floral

Virginia Galvan  
Kathy Gleason  
The Golden Skate  
GourmetGiftBaskets.com  
Hafner Vineyard  
Frank Soenke Hasseloff  
Havana Restaurant  
Scott & Claudia Hein  
Heyday Books  
Brian & Lyn Hirahara  
Judith Hoff Brooks  
Indigo Pilates & Yoga Studio  
Irvin Deutscher Family YMCA  
JAKROO Custom Cycling Apparel  
Jan Gunn Interior Architecture & Design  
Jeff Cohn Cellars  
Steven Jenner  
jinny  
Judd's Hill Winery  
Jules Thin Crust

Kaur Photography  
Geri Keary  
Kendra Scott Design  
Kepler's Golf Repair  
Keren Creations  
Paul Kratter  
Denise Kruff  
Loreta Landucci  
Las Positas Golf Course  
Lindsay Wildlife Experience  
Little River Inn Resort and Spa  
Maria Maria Restaurants  
Mary Frances Accessories  
Napa & Sonoma Valley Bike Tours  
Natalie Avery Designs  
Nancy Niemeyer  
Shirley Nootbaar  
Nothing Bundt Cakes - Walnut Creek  
Oakland Harley-Davidson  
Oakland Symphony

OCSC Sailing  
David Ogden  
Cooper Ogden  
Steve & Sue Ohanian  
The Original Hick'ry Pit - Walnut Creek  
OtterBox  
Park Smart  
Patagonia, Inc.  
Greg Piatt  
Liz Piatt  
Piatti Ristorante & Bar  
Pier 39  
Powell's Sweet Shoppe  
Robin Purcell  
Craig Pynn  
Rake Salon  
REI  
Renaissance Club Sport  
Steven & Marilyn J. Rivera  
Robin Sexton Photography  
Rossmore Golf Course

Round Hill Country Club  
Salsa with Tomaj  
San Francisco Opera  
Scandia Family Center  
Susana Scarborough  
Paul & Nancy Schorr  
SF Bay Adventures  
SFJAZZ  
Six Flags Discovery Kingdom  
Sonoma Raceway  
Mary Spain  
Malcolm & Casey Sproul  
Sprouts Farmer's Market  
St. George Spirits  
Peg Steunenbergh  
Sunrise Bistro & Catering / Ty Pearce  
Suzi Eszterhas Photography  
Touchstone Climbing - Diablo Rock Gym  
Trader Joe's Walnut Creek  
University of California, Berkeley

Urban Plates  
USS Hornet Sea, Air & Space Museum  
V. Sattui Winery  
VICI  
Bruce Vickroy, Steven Kent Winery  
Walnut Creek Marriott  
Wax A Peel  
Deborah Wechsler & Bruce Bilodeau  
Henry White  
Wild Birds Unlimited  
Wild SF Tours  
Woodhouse Day Spa  
YogaWorks  
Zachary's Chicago Pizza, Inc.  
ZUNI Cafe

We have made every effort to spell names accurately. If your name or donation has not been recorded correctly or was mistakenly omitted, we offer our apologies. Please contact us so that we can amend our records.

Mount Diablo Buckwheat rediscovered by botanist Heath Bartosh (SMD Board member) and his colleague, Brian Peterson of Nomad Ecology.

Marsh Creek Trail proposed.

Protected 76-acre Hanson Hills property with EBRPD & HCP.

Won California Non-Profit of the Year Award, Assembly District 16.

SMD acquired our first perpetual Conservation Easement!

**45th Anniversary.**  
Protected Land has expanded from 6,788 acres in 1971 to 110,000 acres in 2016.

2017

& BEYOND...

**45 YEARS**  
of collaboration

# Diablo Trails Challenge

April 2017

Scott Hein

## Mount Diablo Challenge



Caleb Castle

THANKS TO OUR 2016 SPONSORS!

## Save the Dates! April 26-29, 2017

**4 Days Diablo** is a “Gently Roughing It” small group camping trip that leads you on a 30-mile adventure through rarely seen Mount Diablo landscapes, led by expert naturalists, botanists and birders.

While you tour and examine the majestic Diablo wild lands, staff transports your gear and sets up your new camp. Each night, you'll enjoy wine and mouthwatering gourmet dinners prepared on the spot by premier East Bay restaurants.

### FOR INFORMATION

Call Save Mount Diablo at (925) 947-3535 or visit our website at [www.savemountdiablo.org](http://www.savemountdiablo.org)

Scott Hein

Tribute gifts and donations in honor or memory of loved ones made between January 1st - June 30th, 2016 are listed below.

*Thank you to all of our supporters. Your generosity preserves, defends and restores the mountain for all of us to enjoy!*

### In Honor Of

*Seth Adams*

Diablo Valley Democratic Club

Cindy Spring & Charles Garfield

Cary Stevens & Allen Green

*Seth Adams & Aaron Chabot*

Cary Stevens & Allen Green

*Marty & Jen Ambacher*

Clyde & Lois Ambacher

*Martin Aufhauser's Retirement*

Barbara & Marty Gerber

*Steve & Brenda Benkly*

Jody & George Benkly

*Bianca Bloom's Birthday*

Gail Kyono

*Ron Brown*

John & Linda Judd

Steve Kaplan

Michael & Anita Korenstein

Stuart & Barbara Mc Cullough

Geoffrey & Valerie E. Meredith

*Josephine Nola Casto's Birthday*

Amanda Casto

*Camille Chabot #CamilleStrong*

Kerrie Chabot

*Ted Clement's Birthday*

Elise Clement Cutler

*Lisa Cline's Birthday*

Leslie Maienschein-Cline

*Lowell Day*

Mildred Day

*Charla Gabert's 60th Birthday*

Scott & Claudia Hein

*Claudia & Scott Hein*

Darlene Hecomovich

*Meredith Hendricks*

Ginny Knott

*Dr. Gregory L. Hummel*

Gene & Jeannine Hummel

*Barbara Langlois*

Shirley Langlois

*Stephen Lewis*

Ron & Rebecca Yee

*Geoffrey & Valerie Meredith*

Thomas Meredith

*Maya Schechter's Birthday*

Doris S. Smith

*Julie Seelen*

John & Linda Judd

*Jeanne Thomas*

Joan S. Armstrong

Roger & Emily Ehm

*Winifred Wallace*

Shirley W. Hoffman



Stephen Joseph

### In Memory Of

*Linda M. Amdersson*

Bruce Fogel

*Dimitris Argyriou*

Frede Hammes

*Lucile Soule Arnon*

Stephen S. Arnon

*Nell Barker*

Michele Lasagna

*James Bruzzone*

Angela Call

*Bob Burchard*

Jo Pollack

*Engene Callahan*

Marianne Callahan

*Billy "Bud" Coleman*

Kristine Coleman

Craig & Christine Hagelin

Nancy Heinschel

*Tony Cone*

Tom & Carolyn Westhoff

*David Farabee*

Mike & Bonnie Barr

Michele Booth

Rita Breaux

Patty Deutsche

Pam Finlayson & Family

Alina Fortson

Joan Grimes

Robert Herr

Ron Kino

Ray & Robin McLaren

Pillsbury Winthrop Shaw Pittman LLP

Richard & Rayna Ravitz

Karen & Jeffrey Vesely

Western States Petroleum Assn.

*Anna Louise Ferri*

Lawrence E. Ferri

*Jim Fitzsimmons*

Bob & Vicki Henry

*Joseph Goldstein*

Janine Alden

Eldercare Services

Barbara J. Smith

*Beatrice Gordon*

Gaynel Wilhoyte

*Jim Jelter*

Anonymous

Scott DiSavino

Bettina Leong

*Toby Johnson*

Donald & Carole Johnson

*Lillian Kokores*

Joan Cole

*Brian Kruse*

Anonymous

Tobi Benz

Brentwood Teachers Association

Brentwood Union School District Office Staff

Bruce Colwell

Dena Craig

Gayle & Marc Crockett

Dana & Renee Eaton

Martin Griffin & Virginia Alves-Griffin

The CLC Group

Glenn & Kristi Harris

Mary Harris

Scott & Claudia Hein

Verna F. Kruse

Louis Leone

Deborah & Sam LiPetri

Cynthia Lovendusky

Viola Lovendusky

The Helen Cakebread Family

Lucy Meinhardt & Dave Zumwalt

Ron Nunn School

Ruth Shea

Neva Siemens

Malcolm & Casey Sproul

Everett Traverso

Tom & Rosamund Wentling

Sandra Woliver

Ybarra & Linch Families

*Jennie Lessmann*

Walter Lessmann

*Jenny Lyness*

Michele Lasagna

*Nick Martigopoulos*

Jeff & Jean Thatcher & Family

*Donald J. Meagher*

Kathleen Meagher

*Janet Montes*

Terry & Glenn Gonzalez

*William Morgan*

The Helen Cakebread Family

*Janet Mundy*

Tom & Cora Wright

*Dr. Tom Piatt*

Diana & Pete Hutchins

Frank Klobas

Jennifer MacDonough

Margaret E. Mowery

Margorie Rieger

Joan & Wilhelm Schaeffler

The Clark Wallace Family

*Danna J. Pierce*

Anonymous (2)

Janice Bedayn

Marian Bitzer

Kathy Davisson & Gene Cikota

Allen & Barbara Espenmiller

Jason Fong

Molly Lewis

Sydney Martinez

Margherita McIntosh

Kay McKeown

Meridithe Mendelsohn

Carl Ouillette

Lore Politzer

Marjorie Randolph

Paula Silver

Lorna Vierra

*Milton Pitre*

Gisela Pitre

*Annamarie Powell*

Scott & Claudia Hein

Beverly Magan

Paul Villani

*Dolores Price*

Elizabeth Clemente House

Valerie Cooper

Jill Douglas

Jim & Debbie Fleming

Guild of Quilters of Contra Costa County

Linda Hiatt

Ardis Jarrett & Sally Johnson

Kathy & Keith Rea

Marie Rea

Frances Singer

*Betts Sanderson*

Anonymous Loving Friends

Scott & Claudia Hein

Shirley Langlois

Mount Diablo Audubon Society

Kristen Noe

Shannon Riggs

Elizabeth Smylie

Summit Financial Group, LLC

Kim Tarman

*Annamarie Sokinger*

William Villani

*Gayle & Frank Servin*

Leslie Servin

*Dorothy Seyfert*

Ron & Sharon Brown

Natalie & George Ring Sr., Terri & Bob Fritts, George & Loretta Ring, Jr., & our children

*Shilling*

Pets Eternal Rest, Inc.

*Brian Smith*

Karoline Doberenz

*Joe Stadium*

Gerry Bertnick

Bob & Cindy Brittain

Bill & Nancy Campana

Meg Crosby

Scott & Claudia Hein

Evelyn Kennedy & Bob MacPherson

Daniel McGrath

David Ogden & Sandy Biagi

Barbara Scharf

Molly Singer

Ingrid & Curtis Wood

*Howard Thomas*

Judy Canright

*Frank Walden*

Barbara Walden

*Susan Watson*

Scott & Claudia Hein

D. Lowell Jensen

Beverly & Jim Lane

Shirley McPheeters & Wednesday Walkers

Shirley Nootbaar

Barbara J. Smith

Malcolm & Casey Sproul

Frank & Edith Valle-Riestra

Sonja Wilkin

*Dorothy & John Wells*

Marla Schmale & Frank Montoya

We have made every effort to spell names accurately. If your name or donation has not been recorded correctly or was mistakenly omitted, we offer our apologies and ask that you please contact us so that we can amend our records.



1901 Olympic Blvd., Suite 320  
Walnut Creek, CA 94596



Non-Profit  
Organization  
U.S. Postage Paid  
Concord, CA  
Permit No. 525



## Thanks for being a friend.

**AS A FRIEND OF THE MOUNTAIN,**  
*You help to preserve the Diablo wild lands for future generations.*

Whether you enjoy Mount Diablo when you are hiking, cycling, horseback riding, trail running, birding, painting, photographing, looking at it from your kitchen window, or taking in its breathtaking beauty at the end of a long commute home...

**This is your mountain. Become a member to protect it today.**

## NOT A MEMBER YET?

**JOIN US!**

*Contact us for more information.*

*Call or visit us online at:*

**(925) 947-3535 | [SaveMountDiablo.org](http://SaveMountDiablo.org)**

### **Enjoy a variety of perks based on your annual membership tier:**

- Members-only gear; - Recognition in our annual report;
- Our bi-annual Diablo Watch newsletter featuring stories about protected lands, habitat restoration, volunteer projects, and recreation opportunities;
- Invitations to exclusive members-only events, hikes and tours of Mount Diablo;
- Most importantly, your membership means you are committed to preserving the Diablo wild lands for future generations.

*"My dream is that the whole of Mount Diablo, including its foothills, will remain open space... that the visual and natural integrity will be sustained."*

*- Dr. Mary L. Bowerman*

### **Our Mission**

To preserve Mount Diablo's peaks, surrounding foothills, and watersheds through land acquisition and preservation strategies designed to protect the mountain's natural beauty, biological diversity, and historic and agricultural heritage; enhance our area's quality of life; and provide recreational opportunities consistent with the protection of natural resources.

### **What We Do**

**PRESERVE** natural lands through acquisition and cooperative efforts.

**DEFEND** Mount Diablo and its foothills from threats of development through land use planning.

**RESTORE** habitat prior to transfer to a public agency for permanent preservation and public use.

**ENJOY** Diablo's parks through events and recreational opportunities.

### **Why We Care**

This is our home. Preserving natural land forever means safeguarding our quality of life, including our air, water, and views. Only half of Mount Diablo has been preserved. The other half of the mountain, over 70,000 acres, is privately owned and still threatened by development. That means risking the loss of wildlife corridors, ecosystems and recreational opportunities.

# Letter from the Executive Director

## Board of Directors

Scott Hein, *President*  
Burt Bassler, *Treasurer*  
Amara Morrison, *Secretary*  
Heath Bartosh  
Joe Canciamilla  
John Gallagher  
Liz Harvey  
Claudia Hein  
Bob Marx  
Sue Ohanian  
Malcolm Sproul  
Jeff Stone

## Staff

Ted Clement  
*Executive Director*  
Seth Adams  
*Land Conservation Director*  
Jim Cartan  
*Stewardship & Outreach Coordinator*  
Caleb Castle  
*Communications Manager*  
Hidemi Crosse  
*Bookkeeper*  
Karen Ferriere  
*Assistant Development Director*  
Juan Pablo Galván  
*Land Use Manager*  
Shannon Grover  
*Development Associate*  
Dana Halpin  
*General Office Manager*  
Meredith Hendricks  
*Land Programs Director*  
Nicole Murphy  
*Executive Assistant*  
Kristen Noe  
*Development Associate*  
Monica Oei  
*Finance & Administration Director*  
George Phillips  
*Land Conservation Manager*  
Jennifer Ramirez  
*Accounting Associate*  
Deborah Toll White  
*Development Director*

Dear Friend of the Mountain,

This year, Save Mount Diablo celebrates forty-five years of caring collaborations and relationships that have produced important and lasting conservation successes for our beloved mountain, its natural surroundings and the larger Bay Area community. This thoughtful coming together, based on shared love and gratitude for these irreplaceable lands, is also the way forward and how we will achieve additional conservation successes for the benefit of current and future generations.



Ted Clement, SMD's Executive Director and Robert Doyle, General Manager of the East Bay Regional Park District (EBRPD) with Las Trampas Regional Wilderness-EBRPD behind.

When Save Mount Diablo (SMD) was founded in 1971, the mountain was home to just one 6,788-acre park, Mount Diablo State Park. Today, as a result of SMD, our wonderful partners (individual supporters, governmental agencies, foundations, local businesses, etc.), and our collective appreciation of this place, there are more than 40 parks and preserves around the mountain, totaling over 110,000 conserved acres—one of the Bay Area's most significant assemblages of natural lands and wildlife habitat.

This issue of Diablo Watch acknowledges and celebrates many of our partners—such as the East Bay Regional Park District, California State Parks and the East Contra Costa County Habitat Conservancy—and our collective accomplishments over the past forty-five years while also looking forward.

To further our success of protecting the Mount Diablo area, and the roughly 70,000 acres at risk, we must grow our partnerships and people's connections to these wild lands as love is the basis for good stewardship. Several new programs and efforts, a number of which are written about here, will help us do that: our new Conservation Collaboration Agreement program with local schools; our new free public hiking series known as Discover Diablo; and our new membership program, known as Friends of the Mountain, which has a special new youth membership category.

We are grateful for you and all you have helped us accomplish over the past forty-five years. Together, combined with new partners, we will take our time sensitive land conservation mission for the Mount Diablo area even further—creating more public benefits that will last for the next forty-five years and well beyond!

With Gratitude,

Edward Sortwell Clement, Jr.  
Executive Director  
Save Mount Diablo



Ted Clement, Executive Director of Save Mount Diablo accepts the 2016 California Non-Profit of the Year award for Assembly District 16 from Assemblywoman Catherine Baker.



## Partnerships Are Essential - But How Do Ours Really Work?

**How do we go about the business of saving the mountain?** What exactly is it we are saving these days? Our land conservation work is an effective but convoluted mix of land use advocacy, policy and legislation, acquisition, stewardship and education—we depend on strong working relationships with our partners for all of it.

But how do our partnerships with the California State Parks, the East Bay Regional Park District (EBRPD) and the East Contra Costa County Habitat Conservancy (Habitat Conservancy) actually work?

As with any set of relationships worth having, it's complicated.

A few years ago I took a call from a property owner out on Marsh Creek Road who wanted to sell the family land but the family also wanted it to be preserved. Were we interested? Yes.

**“A handful of volunteers started with a modest following and a huge goal: to protect Mount Diablo and its foothills.”**

Through the process of securing an option to acquire the property that allowed us time to raise the money to buy the ranch, we got to know the Hanson family and learned about the land their family lived on for over 100 years. The Hanson children, now all in their eighties, remember fishing for

steelhead in Marsh Creek on SMD's Big Bend property and camping out on warm nights atop their pyramidal peak with its 755-foot picture perfect views of Mount Diablo. By the spring of 2015 we raised the funds and closed escrow on the property. We then turned our attention to securing it forever by working with our partners at EBRPD and the Habitat Conservancy to transfer Hanson Hills into the regional park system.

Located outside the Urban Limit Line and in the middle of the target area called out for preservation by the Habitat Conservancy, Hanson Hills just became the newest addition to EBRPD's Deer Valley Regional

*Continued on next page...*

### Meet Our New Board Members

*We are pleased to welcome our newest Board members to Save Mount Diablo.*

#### Liz Harvey



Liz Harvey, Certified Fund Raising Executive (CFRE), has 30 years of experience in Bay Area philanthropy and is able to connect her love of the outdoors with her concern for the environment. She grew up in Alamo looking at Mount Diablo from her backyard. She now lives in Danville, and loves running, camping, kayaking and hiking. Prior to joining the Board, Liz was an active SMD supporter by participating in and raising funds for our events.

#### Bob Marx

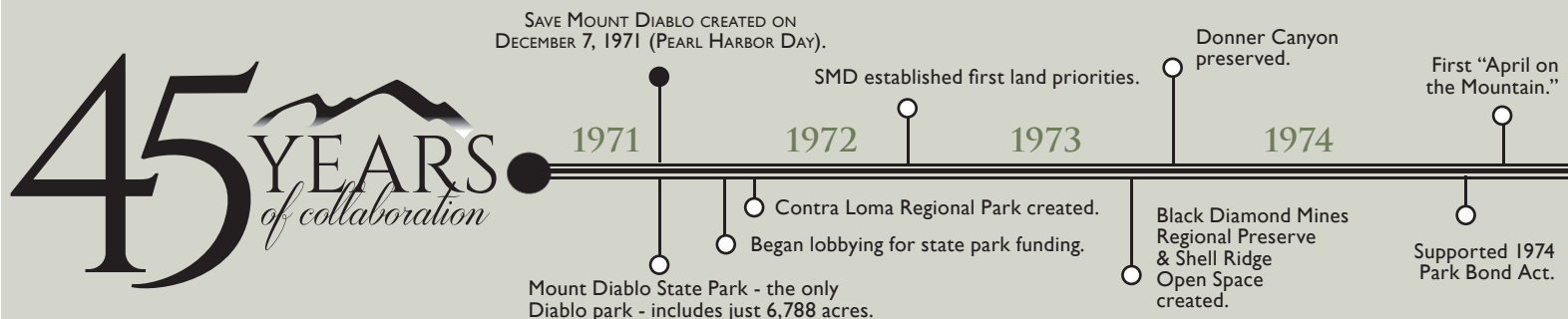


We welcome Bob Marx back to our Board! Bob was a Board member from 1997–2004. Bob and his wife Joan own Summit Ranch in Alamo, which borders Mount Diablo State Park. Bob is a longtime equestrian who is frequently out on the trails of Mount Diablo. He also proposed our largest fundraiser, Moonlight on the Mountain, to be held at the China Wall above Summit Ranch. Bob's love and appreciation of Mount Diablo goes beyond words!

#### Jeff Stone



Jeff graduated from UCLA with B.A.'s in Political Science and Communications, and a J.D. from UC Davis, King Hall. Following law school, Jeff went back into the family construction business, Diamond Construction, based out of Lafayette. Jeff has expanded the business and now focuses on construction, transactional real estate, and development. Jeff and his wife Lauren were married last year at the summit of Mount Diablo, as they both love the mountain and the outdoors!



"In the past 45 years, there has been  
**AN INCREDIBLE SUCCESS STORY**  
here in the East Bay."

## Partnerships - Cont'd

Preserve last spring. Here is how the deal worked—the bulk of the funds for the purchase from SMD came from the Habitat Conservancy's grant funds, with the rest provided by EBRPD using Measure WW money. The Habitat Conservancy staff sought the necessary approvals from its Governing Board, as well as from state and federal wildlife agencies. EBRPD moved the project through their Board of Directors in parallel. SMD agreed to sell EBRPD the property for appraised fair market value and used the proceeds of the transaction to invest in other conservation lands.

SMD purchased the property knowing it was within the priority habitat areas for the Habitat Conservancy and the recent expansion work of EBRPD in the Deer Valley area. The sale of Hanson Hills to EBRPD makes a protected north-south habitat corridor (from Roddy Ranch to Marsh Creek) one step closer to completion. It also replenished SMD's acquisition funds so that other land could be preserved.

"Save Mount Diablo staff have built relationships in the region with landowners who are interested in

seeing their ranches and family lands conserved. SMD staff are also effective working with partner agencies like EBRPD and the Habitat Conservancy to secure funding and to help property owners sell their land and know that it will be conserved. The Hanson Hills acquisition is the most recent property in a long line of successful conservation

EBRPD. Doyle notes that, "In the last 45 years, there has been an incredible success story here in the East Bay. I was lucky to be a part of Save Mount Diablo's early creation. A handful of volunteers started with a modest following and a huge goal: to protect Mount Diablo and its foothills."

He adds, "Today, eight Regional Parks surround Mount Diablo State Park, forming an incredible landscape of protected and connected parklands. This has been a lasting legacy of the many partnerships Save Mount Diablo has worked so hard to make happen. Much has been accomplished working together."

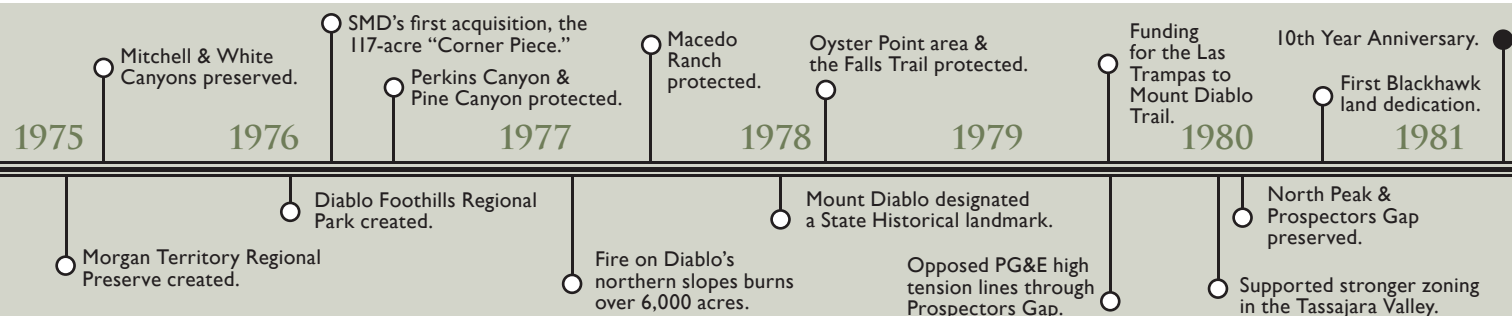
More recently, the East Contra Costa County Habitat Conservancy was launched in 2008 (after a 10-year planning effort) and directs mitigation funding, leveraged with conservation funding for acquisition, restoration and management of up to 30,300 acres of the lands we care about. The Habitat Conservancy provides streamlined endangered species and wetland permitting for development and infrastructure projects in exchange for collecting fees for those projects. The Conservancy also raises grant funds, allowing for a more holistic approach



Signing of the East Contra Costa County Habitat Conservation Plan on Kreiger Peak in July 25, 2007. SMD worked with Contra Costa County, the East Bay Regional Park District, Contra Costa Water District, state and federal wildlife agencies, 4 cities, and many other community stakeholders to create the plan which will help raise \$300 million to protect more than 30,000 acres of wildlife habitat over 30 years.

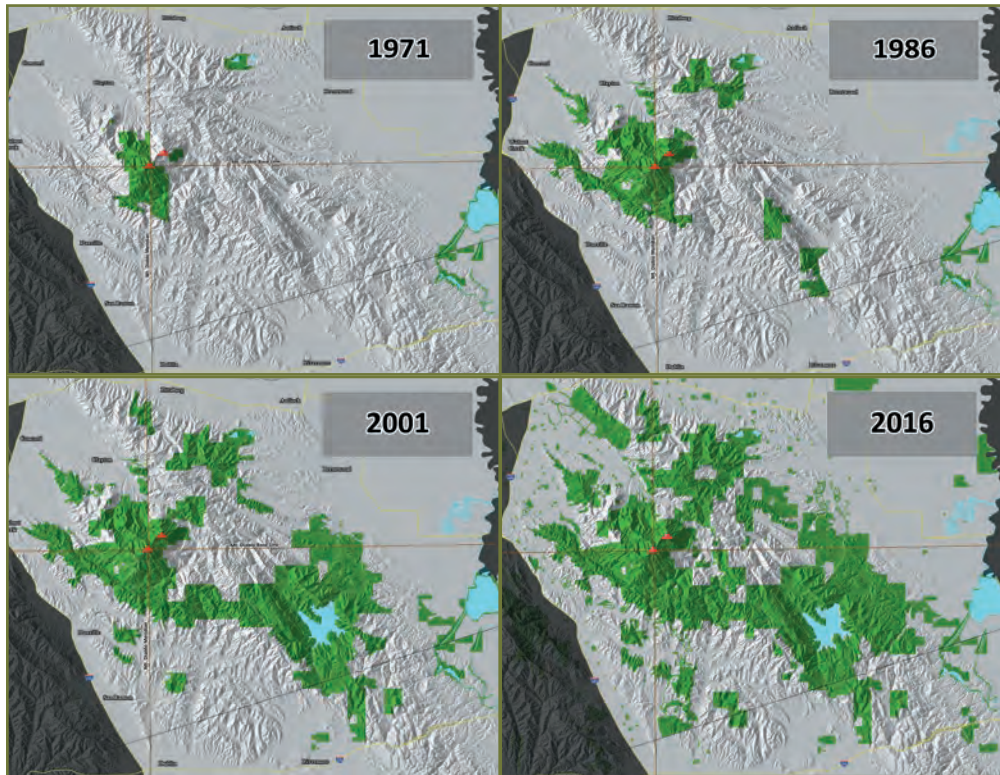
stories," said Abby Fateman, Executive Director of the Habitat Conservancy.

Remarkably, our partnership with the East Bay Regional Park District dates back 45 years because one of our founding board members was Robert Doyle, now the General Manager of the





“This has been  
**A LASTING LEGACY**  
of the many partnerships...”



In 1971, there was just one park on Mount Diablo. Working first with partners such as State Parks and Contra Costa County, then with the East Bay Regional Park District, and cities, the Coastal Conservancy, the East Contra Costa County Habitat Conservancy, Contra Costa Water District – we and our allies have pieced together an expanse of Diablo wild lands that is greater than 110,000 acres, an area bigger than Point Reyes National Seashore or the Golden Gate National Recreation Area.

### PROTECTED LAND: 1971 TO 2016

to mitigation and conservation on the east side of the mountain.

SMD was at the table helping to create the Habitat Conservation Plan/Natural Community Conservation Plan and to define the habitat priorities. Many of the goals of the Habitat Conservancy are enacted in concert with our mission.

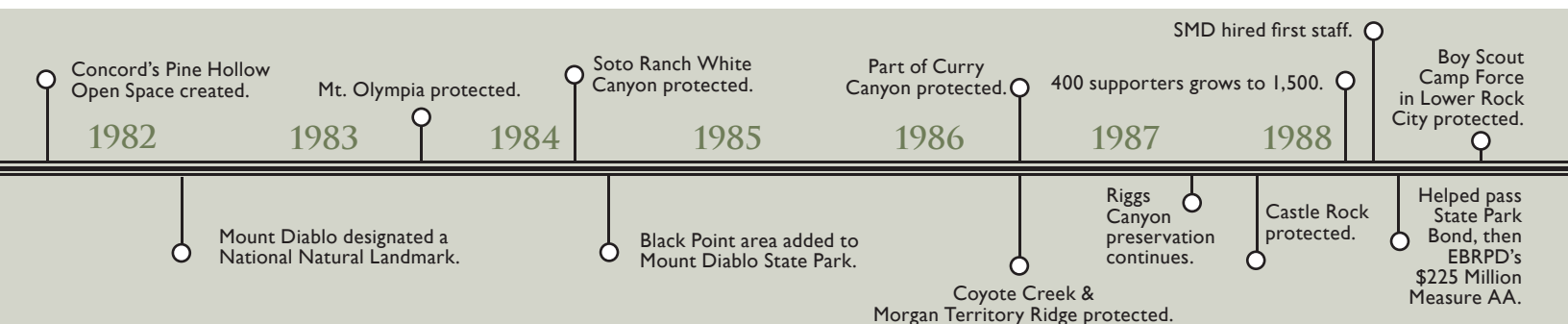
According to Fateman, “Save Mount Diablo was active in the stakeholder process during Plan development. They were at the table with the development community, agriculturalists, and local residents to help shape the Plan’s conservation strategy. As the process moved from planning to implementation, SMD continued its engagement on

the Habitat Conservancy’s Public Advisory Committee and is a valuable implementation partner.”

Although regional parks have expanded rapidly, it has been over ten years since land was added to Mount Diablo State Park and while we hope that changes soon, our efforts over that time have been focused on supporting research on the mountain and on funding for the park system, primarily through efforts at the ballot. We worked behind the scenes this summer on a park bond proposal that ultimately never made it to the Governor’s desk but which should be revived by the legislature next year. We have also provided support to the park itself, including partially funding the new volunteer coordinator and renovating the historic beacon on the summit.

“Our long-standing partnership with Save Mount Diablo was born while acquiring important lands for Mount Diablo State Park. These critical landscapes provide necessary space for unique and significant species which are only found in this region.” said Danita Rodriguez, Superintendent of the Bay Area District for California State Parks. She continued, “Our current relationship goes beyond acquisitions as Save Mount Diablo supports our volunteer program; provides connections with subject

*Continued on page 10...*



# Mount Diablo Buckwheat

## Critically Endangered Wildflower Discovered Near Antioch

Scott Hein

Thanks to a team of botanists contracted by the East Bay Regional Park District (EPRPD), the endangered Mount Diablo Buckwheat was identified as thriving at Black Diamond Mines Regional Preserve in Antioch, California.



Save Mount Diablo board member Heath Bartosh, (left) and Brian Peterson (right) amidst a field of rare Mount Diablo Buckwheat wildflowers that they rediscovered in May of 2016. This location is being kept a secret to protect the species.

there were only 20 plants at a single spot in the entire world. Locating the plant has been “the holy grail” for East Bay botanists and news of the rediscovery spread quickly.

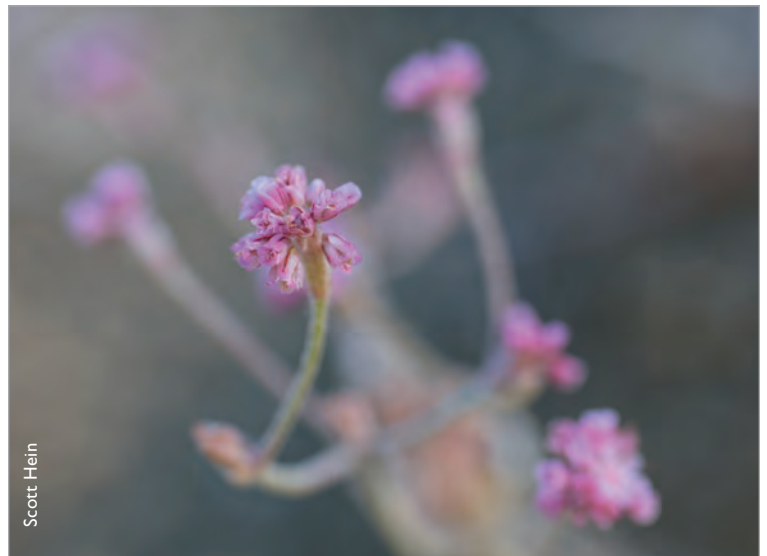
Save Mount Diablo is a member of the Mount Diablo Buckwheat Working Group which has been actively searching for the rare plant since it was first rediscovered at Mount Diablo in 2005.

After the 2005 rediscovery, seeds were collected and camera traps installed to monitor the wild population. Beginning in 2006, plants were propagated at UC Botanical Garden at Berkeley. Seeds are stored in multiple seed banks. Efforts made to increase the population at Mount Diablo have been challenging, but were successful in increasing numbers even

during repeated years of drought. The discovery site was kept secret to protect the species.

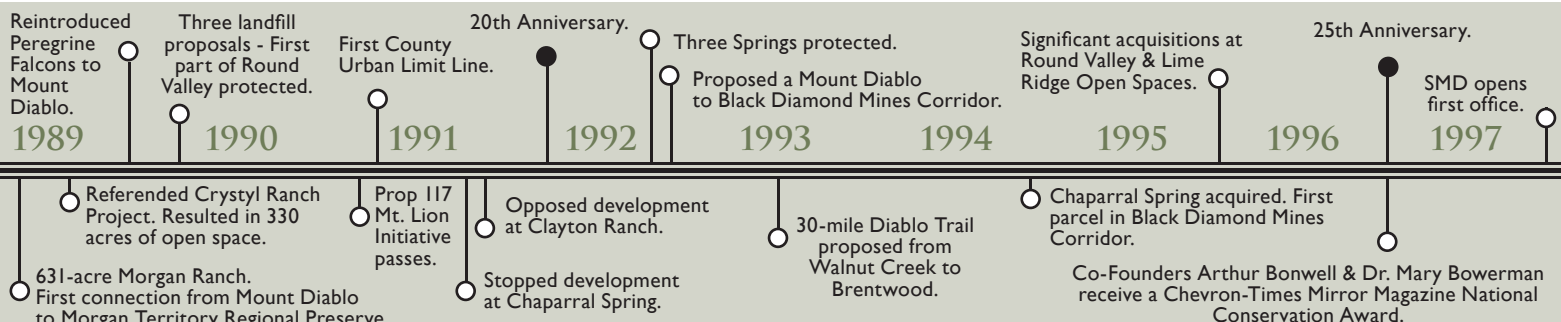
Habitat was mapped and explored over the next ten years but no additional populations of the plant were found. There was just one location for the critically endangered plant, on the brink of extinction, with just 100-200 plants.

Until this May, when the two botanists found a second population. Unlike the sparse population of 100-200 plants at Mount Diablo, the new discovery site was estimated to include approximately 1.8 million plants—but in just two patches totaling a half acre.



Close up image of the Mount Diablo Buckwheat (*Eriogonum truncatum*), 2016. Locating the plant has been “the holy grail” for East Bay botanists.

“I’m so thrilled to share this news, it’s the find of a career.” said Bartosh. “The most recent records of Mount Diablo Buckwheat are from chaparral edges on Mount Diablo. But early California botanist William Brewer, the original



## The plant “could be dramatically affected by East County development pressure.”

discoverer, found it on dry hillsides near Marsh Creek. We recorded this species growing in grassland on highly erosive soils, most likely the same type of habitat Brewer observed. The new information will hopefully lead to the discovery of other new populations.”

“Finding the Mount Diablo Buckwheat in Black Diamond Regional Preserve is exciting,” said Matt Graul, Chief of Stewardship at EBRPD. “The locations are being kept secret to protect the endangered plant and the working group waited until the plants have gone to seed to announce the discovery. The Park District takes our responsibility to be good stewards of this rediscovered treasure incredibly seriously.”

“This plant is so rare botanists haven’t been sure where to look,” said Seth Adams, Land Conservation Director for Save Mount Diablo. “Many references still suggest the species is extinct. On the one hand a second location is good news, but it could be dramatically affected by East County development pressure. Right now, for example, Antioch is considering plans for more than 4,000 houses.”

“THIS PLANT IS SO RARE BOTANISTS HAVEN’T BEEN SURE WHERE TO LOOK.”



Save Mount Diablo co-founder Dr. Mary Bowerman collecting samples from the mountain, 1932. Dr. Bowerman recorded *Eriogonum truncatum* in 1936, the 6th of only 7 known findings (until now). The last known sighting of the Mount Diablo Buckwheat was recorded in 2005.

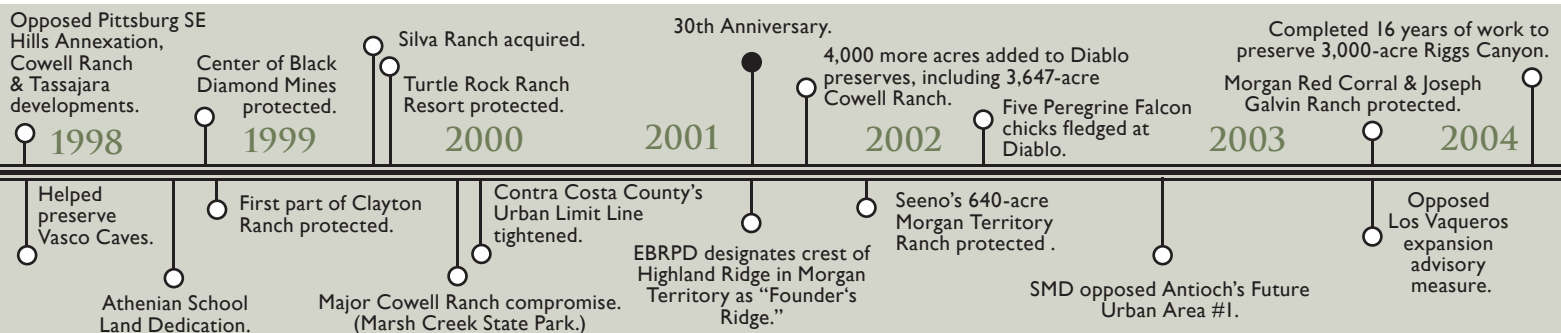
“The Antioch population habitat is quite different from the 2005 rediscovery site, and provides valuable information for efforts to develop new populations,” said Holly Forbes, Curator and Conservation Officer at UC Botanical Garden at Berkeley. “Our efforts to propagate this species at the Botanical Garden and to protect seeds in seed banks are insurance against natural disaster in habitat.”

*Eriogonum truncatum* was first recorded on May 29, 1862 by William H. Brewer on the Mexican rancho acquired by Dr. John Marsh. Over the next 78 years the Mount Diablo Buckwheat was recorded a total of seven times. The second last recording was in 1936, by botanist Mary Bowerman, who later became co-founder of Save Mount Diablo.

Since then Eastern Contra Costa has become a nationally recognized biodiversity hot spot for rare species. The good news is that thousands of acres there have been preserved.

However the area is also threatened by rapid development. Discovery of a second population of the Mount Diablo Buckwheat edges the species back from the brink of extinction.

By Seth Adams  
Land Conservation Director  
Save Mount Diablo





Ted Clement

# Save Mount Diablo Launches New Program with Local School on Earth Day

On April 22, 2016, Earth Day, Save Mount Diablo (SMD) had the privilege of signing our inaugural Conservation Collaboration Agreement with Joaquin Moraga Intermediate School (JMIS), a public middle school in Moraga. Its mission highlights preparedness for the future and a life-long love of learning while providing a positive and safe learning environment. JMIS encourages self-development through opportunities to contribute to society at large as well as the local community.

The Agreement acknowledges that the Mount Diablo region’s natural environment is greatly threatened by development and other pressures and that the students of JMIS have a major stake in what their future environment will look like. The Agreement further recognizes that it is important for these students to learn about and directly connect with their natural environment. In this modern and fast paced society which often distracts us from the natural world, it is crucial that environmental education initiatives re-center young people’s curiosity and values to our collective backyard.

Learning how to step up, protect the natural landscape and contribute to community efforts are integral components of the Conservation Collaboration Agreement. By working together, the parties can better help protect the Mount Diablo region while furthering their respective land conservation and education missions. Dawn Lezak, a JMIS teacher, said, “Through the partnership with Save Mount Diablo, Joaquin Moraga Intermediate’s EARTH Class and ECO Club students were able to apply what they learned in school and see how

land conservation works in practice. This experience gave them the opportunity to see how relevant their classroom curriculum is to local conservation and environmental activism.”

The Conservation Collaboration Agreement had three basic parts. First, the staff of SMD provided in-class educational presentations regarding land conservation to the JMIS 6<sup>th</sup> grade EARTH Class and ECO Club. Next, SMD staff taught and led the JMIS 6<sup>th</sup> grade EARTH class and ECO Club in an outdoor, experiential work service project at SMD’s Curry Canyon Ranch property—which also included a contemplative journal writing exercise where students did a 30-minute solo outdoors and reflected on the question of “What is nature and what is my part in it?”

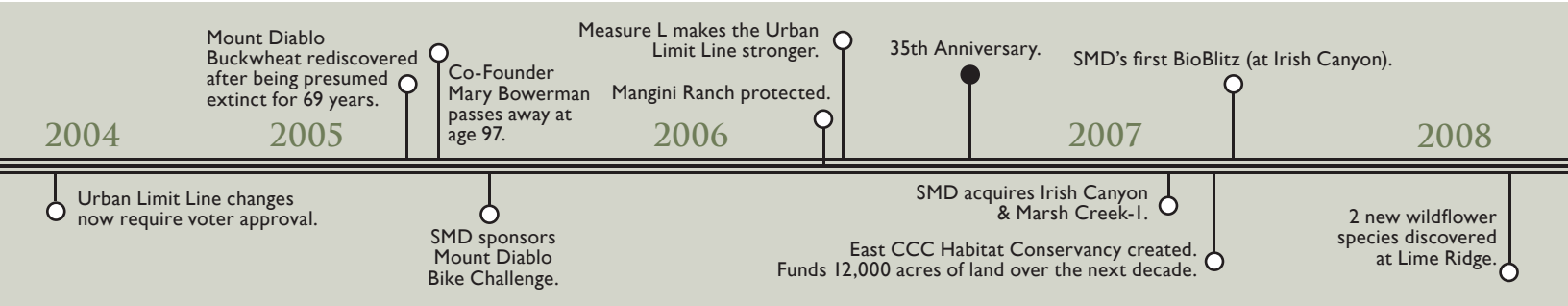


Students and Faculty of the Joaquin Moraga Intermediate School (JMIS) working hard to help steward the land at Save Mount Diablo’s Curry Canyon Ranch property.

Finally, JMIS and its participating students raised money to become members through SMD’s new Young Friends Membership Program. Students in the 6<sup>th</sup> grade EARTH Class and ECO Club are directly contributing to the philanthropy necessary to support SMD’s time-sensitive land conservation work, learning that it takes a collaborative, group effort to protect the natural environment we all rely on.

To learn more about SMD’s new Conservation Collaboration Agreement program and how to participate, please contact Jim at [jcartan@savemountdiablo.org](mailto:jcartan@savemountdiablo.org) or 925-947-3535.

By Ted Clement  
Executive Director  
Save Mount Diablo



## The Concord Naval Weapons Station Success Through a Decade of Collaboration

Ten years after we began our work on the Concord Naval Weapons Station (CNWS) Area Reuse Plan, changes to this more than 5,000-acre swath between Concord and Pittsburg south of Highway 4 are starting to happen on the ground. Eventually more than 12,000 housing units are envisioned, and 69% of the area will become protected city parks, greenways and East Bay regional park land. None of the large conservation gains won on this project could have happened without the extensive cooperation and collaboration efforts Save Mount Diablo has engaged in for over a decade.

In 2005, the Navy approved the closure of the 5,046-acre inland area of the CNWS, a landscape of rolling hills, grassland, and oak woodland dotted with bunkers and old railroad tracks. Even before 2005, Save Mount Diablo saw the huge opportunity that this vast area of mostly-undeveloped land represented for wildlife habitat protection and outdoor recreational experiences. We also recognized that others saw great opportunities of a different sort, and that by working together, everyone had a better chance of accomplishing their own separate goals and winning much more than would be possible if everyone went it alone.

In 2007, we joined with Concord residents around CNWS, labor unions, interfaith groups, affordable housing advocates and other environmental organizations to form the Community Coalition for a Sustainable Concord (CCSC). Over the next five years as Concord prepared the Area Reuse Plan, which would be the blueprint for future use of the CNWS, the CCSC worked to make its vision of a vibrant mix of jobs and affordable homes in walkable neighborhoods

surrounded by protected open space become reality.

As a result, when the City adopted the Area Reuse Plan in 2012, over 3,500 acres of land were designated as parks, greenways and open space. Most of this will be a new regional park owned and managed by the East Bay Regional Park District (EBRPD), which is currently finalizing a Park Use Plan for the area. Affordable housing guidelines were also set, greenway buffers between existing residents and new development would be created, good jobs would be

secured and transit-oriented mixed-use development would be built to capitalize on the North Concord BART Station and keep as many cars off the road as possible.

Since 2014 we have played an active role as Concord searched for a Master Developer to start implementing the Area Reuse Plan vision. Lennar was chosen as Master Developer this year. Next, as a Specific Plan is crafted and put into practice over the next few years, our work will focus on making sure that our gains in the Area Reuse

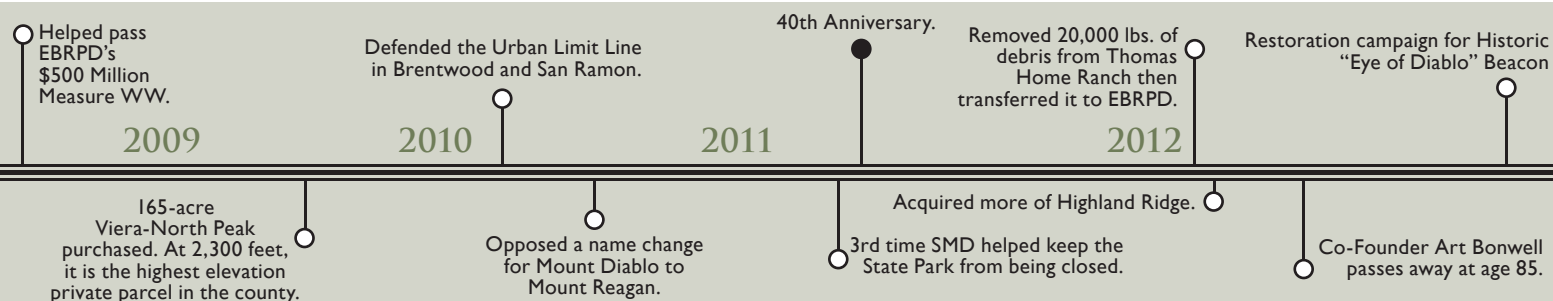
Plan are put into place on the ground. First the Navy must transfer the land to Concord and EBRPD, which could happen for EBRPD by mid-2017. The recent visit by Secretary of the Interior Jewell to the CNWS for the Port Chicago Memorial could speed things up.

Our hope is that we will be successful in the future by doing what has worked so well for us in the past: collaborating with different stakeholders to accomplish goals that benefit our entire community.

By Juan Pablo Galván  
Land Use Manager  
Save Mount Diablo



A huge part of the Concord Naval Weapons Station is slated to be transferred to the East Bay Regional Park District, possibly as early as 2017.





## Partnerships - Cont'd

*Continued from pg. 5 ...*

*"Partnerships are Essential - But How Do Ours Really Work?"*

matter experts while coordinating and sponsoring occurrences such as the Bioblitz and the Pearl Harbor Survivors remembrance event; and restoration of the beacon with substantial political and community support."

Our partnerships and thanks are not limited to these three agencies. We are also very active with a number of other non-profits and volunteer groups, including other land conservation organizations, smart growth, affordable housing and transit groups, and we co-founded the Environmental-Labor

Coalition of Contra Costa County.

It's a little bit like diversifying an investment portfolio. We balance our relationships and work to protect habitat on and around Mount Diablo so as not to rely totally on any one approach. Partnering with diverse stakeholders, including our amazing members and donors, helps us tap into the kind of creative, entrepreneurial thinking needed to preserve land in the face of significant development pressures in the Bay Area.

Together with Mount Diablo Interpretive Association and Lindsay Wildlife Experience, SMD will offer the Diablo California Naturalist

Program beginning in January of 2017, a program of the University of California Naturalist Program. The certification program is designed to allow citizen scientists to help protect and preserve unique ecosystems with a focus on Mount Diablo. Participants will receive training in a number of fields including ecology, geology, resource management and interpretation to bolster their work as volunteers for the host organizations. Volunteers are essential to SMD and we are lucky to have hike leaders and property stewards dedicated enough to become certified naturalists, reinforcing our science-based founding.

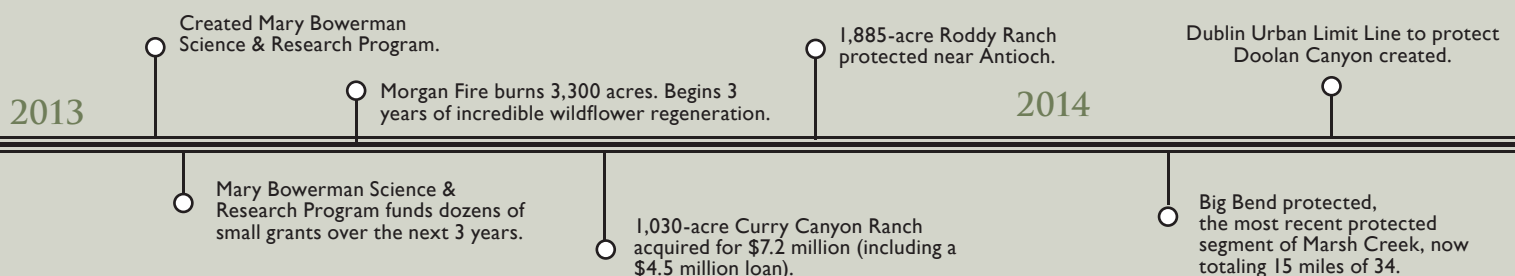
Preserving a mountain, a landscape, is tough stuff. It requires many people all agreeing over and over again that it is the right thing to do. Our partners help us maintain a strong line of defense, preventing vulnerabilities and bolstering our resolve. They work alongside us to restore habitat to give plants and wildlife the best shot at survival.

And in these ways we take care of the mountain together so it is intact for all to enjoy.



Beacon restoration partnership agreement, 2012. Left to Right: Former Director of State Parks Major General Anthony Jackson, former Assemblywoman Joan Buchanan, retired SMD Executive Director Ron Brown, retired Mount Diablo State Park Superintendent Roland Gaebert, State Parks Bay Area District Superintendent Danita Rodriguez.

By Meredith Hendricks  
Land Programs Director  
Save Mount Diablo





## My Mount Diablo

I grew up in Marin County thinking Mount Tamalpais was the greatest mountain ever. When I moved to Contra Costa County in the early 1990's, Mt. Tam was still the best. Then trail running came into my life and through it I began to learn of and appreciate all the nuances of my new home park. There were waterfalls, beautiful flowers and trees, tarantulas and beautiful snakes. The views of Mt. Tam were also gorgeous.

Wildlife of all types must be persistent to exist and flourish on Mount Diablo—sort of like me. So when retirement happened and I wanted to give back to the area for all it had given me, I volunteered to work at the Native Garden and the trail crews in Mount Diablo State Park and somehow found out about the East Bay Trail Dogs and Save Mount Diablo.

On my first day with the East Bay Trail Dogs I was told by the EBTD president that I was too small and couldn't do the work. Well, I have been at it now for nearly five years. Save Mount Diablo has given me lots of opportunities to help make life a bit easier for the wildlife.

Thank you Save Mount Diablo.

**By Carol Lane, Volunteer**

*Carol began volunteering with Save Mount Diablo nearly 5 years ago and is retired. Carol lives in Concord with her husband Larry and their dog Angel.*



## DISCOVER DIABLO

## OUR REVAMPED HIKE PROGRAM!

“**Discover Diablo**” is Save Mount Diablo's new program of free guided public hikes.

One major component of Discover Diablo will be an annual schedule of free public hikes publicized at the beginning of each calendar year. We will continue to host one monthly property hike, taking place and focusing on a specific piece of land Save Mount Diablo owns and stewards, as well as one monthly family hike.



SMD Land Committee taking a hike at Round Valley Regional Preserve, February 2016.

Family hikes will take place on a collaborating agency's land and will highlight ecologic features or a designated theme. We will also offer a hike series intended to build certain skill sets or grant access to SMD members exclusively.

The goals of Discover Diablo are building awareness of the importance of land conservation and permanently protecting open space for habitat, as well as recognizing the value of outdoor recreation, reaching new audiences, building our membership base, and sparking passion for wild lands in the youngest of trail blazers.

Stay tuned for the launch of this new program!

*If you have any questions regarding Discover Diablo, please contact Jim Cartan, SMD's Stewardship and Outreach Coordinator: [jcartan@savemountdiablo.org](mailto:jcartan@savemountdiablo.org).*

**By Jim Cartan**  
Stewardship &  
Outreach Coordinator  
Save Mount Diablo



600,000 lbs. of debris (including 2 entire houses!) removed from Marsh Creek-6 Volcanic Dome.

2015

Replanted Marsh Creek-6 Volcanic Dome.

Former SMD Executive Director Ron Brown retires.

Repowering projects remove thousands of derelict windmills which threaten birds.

Events attended by over 5,000 people.

10 Years working on the Concord Naval Weapons Station.

SMD Executive Director Ted Clement hired.

## Moonlight Reflections



*Thank you for joining us in celebrating our 45th anniversary.*

**THIS YEAR, OUR DONORS AND GUESTS HELPED RAISE OVER \$450,000**  
through ticket sales, the auctions, and sponsorships to protect, restore and defend  
the Diablo wild lands - so we can all enjoy.

*That's amazing and we're so grateful! We can't wait to see you all again next year.*

**Mark your calendar now for Saturday, September 9, 2017.**

## THEN & NOW: MOONLIGHT IN 2002 VS. 2016



"When I suggested we hold the gala at China Wall, a half-mile from Summit Ranch, I got a lot of strange looks. The first MOTM was attended by 120 people. It was a very relaxing, intimate event with a String Quartet and battery lanterns on the tables with a 4-course meal prepared and served by Sunrise Bistro, and they are still doing so today. Mount Diablo State Park and San Ramon Valley Fire District were in attendance and approved of the way SMD put on the event. Around 8 p.m. the full moon rose above Mount Diablo to many cheers and glasses of wine raised in a toast. When I asked all if they enjoyed the event and should we do it again next year, all shouted out 'YOU BET!'.

Fifteen years later, we are still going strong. See you all in 2017!"

- Bob Marx

"The first Moonlight on the Mountain was held in 2002. It was quite the undertaking for such a small staff and group of volunteers who had to do everything—plan the event, invent the art panels, setup, tear-down, clean up, and attend the event, of course! I remember madly stapling the programs together at the last minute. But with around 120 attendees, an acoustic ensemble, battery lanterns on the tables, and dinner served by Sunrise Bistro under the full moon, it inspired us to continue to grow. Today we have a much larger staff and hundreds of volunteers, and the event has grown to support 500+ attendees. Moonlight on the Mountain is such a unique opportunity to celebrate and connect people to our work!"

- Scott and Claudia Hein

2016

Achieved National Accreditation  
from Land Trust Accreditation Commission.

Expanded Conservation  
Buyer Program, including  
use of Conservation  
Easements.

Optioned 88-acre  
North Peak Ranch.

Created and adopted new Rolling  
Three-Year Strategic Plan.

Implemented new  
Conservation Collaboration  
Agreement Program.

Designed and successfully  
implemented strategy to pay off  
loan for historic acquisition of  
Curry Canyon Ranch.

Won 11 out of  
the last 11 ballot  
measures since 2005.

# Thanks to our Moonlight Sponsors & Donors!



Jeanne  
Thomas



Charla Gabert  
& David Frane



OCCASIO  
WINERY



Tom Steyer  
& Kat Taylor



Bob & Joan  
Marx



LSA

## LIVE AUCTION

**Anonymous**  
**Beets Hospitality Group**  
**Mark & Silvia Belotz**  
**Paul Bonderson**  
**California State Parks**  
**Elaine Coronado**  
**FastFrame**  
**Jim & Bette Felton / Sky Terrace Vineyards**  
**Forbes Mill Steakhouse**  
**Stephen Joseph**  
**Steve & Sue Ohanian**

## SILENT AUCTION

Adventure Cat Sailing Charters  
Artisan  
Artistic Home Interiors  
Asian Art Museum  
Kim Bass  
Bay Nature Institute  
Beach Blanket Babylon  
Beets Hospitality Group

Mark & Silvia Belotz  
Sarah Anne & Matthew Bettelheim  
Bette's Oceanview Diner  
Sandy Biagi  
Blackhawk Automotive Museum  
Blue Waters Kayaking  
Carla Bolotaolo  
Bridges Restaurant & Bar  
Boomers  
Marta Brownfield  
Buddy Burke  
Cache Creek Casino Resort  
Cakebread Cellars  
California Canoe & Kayak  
Canvas and Cabernet  
Paula Carvalho  
Casa Orinda  
Charles M. Schulz Museum & Research Center  
The Cheesecake Factory  
Christesen's Western & English Saddlery

Circles of Colors  
City Lights Theater Company  
Clementine's  
Concannon Vineyard  
Concord Mt Diablo Trail Ride Association  
Cottage Jewel  
Suzanne Darcy  
Congressman Mark DeSaulnier  
Disneyland Resorts  
Verna Dow  
Drake's Brewing Co.  
Ken Dyleski  
Eagle Vines Golf Club  
East Bay Nature  
Eden Jewelry  
Edible Arrangements  
Eight Bridges Brewing, Inc.  
Jim & Bette Felton / Sky Terrace Vineyards  
Fit Spa  
Floral

Virginia Galvan  
Kathy Gleason  
The Golden Skate  
GourmetGiftBaskets.com  
Hafner Vineyard  
Frank Soenke Hasseloff  
Havana Restaurant  
Scott & Claudia Hein  
Heyday Books  
Brian & Lyn Hirahara  
Judith Hoff Brooks  
Indigo Pilates & Yoga Studio  
Irvin Deutscher Family YMCA  
JAKROO Custom Cycling Apparel  
Jan Gunn Interior Architecture & Design  
Jeff Cohn Cellars  
Steven Jenner  
jinny  
Judd's Hill Winery  
Jules Thin Crust

Kaur Photography  
Geri Keary  
Kendra Scott Design  
Kepler's Golf Repair  
Keren Creations  
Paul Kratter  
Denise Kruff  
Loreta Landucci  
Las Positas Golf Course  
Lindsay Wildlife Experience  
Little River Inn Resort and Spa  
Maria Maria Restaurants  
Mary Frances Accessories  
Napa & Sonoma Valley Bike Tours  
Natalie Avery Designs  
Nancy Niemeyer  
Shirley Nootbaar  
Nothing Bundt Cakes - Walnut Creek  
Oakland Harley-Davidson  
Oakland Symphony

OCSC Sailing  
David Ogden  
Cooper Ogden  
Steve & Sue Ohanian  
The Original Hick'ry Pit - Walnut Creek  
OtterBox  
Park Smart  
Patagonia, Inc.  
Greg Piatt  
Liz Piatt  
Piatti Ristorante & Bar  
Pier 39  
Powell's Sweet Shoppe  
Robin Purcell  
Craig Pynn  
Rake Salon  
REI  
Renaissance Club Sport  
Steven & Marilyn J. Rivera  
Robin Sexton Photography  
Rossmoor Golf Course

Round Hill Country Club  
Salsa with Tomaj  
San Francisco Opera  
Scandia Family Center  
Susana Scarborough  
Paul & Nancy Schorr  
SF Bay Adventures  
SFJAZZ  
Six Flags Discovery Kingdom  
Sonoma Raceway  
Mary Spain  
Malcolm & Casey Sproul  
Sprouts Farmer's Market  
St. George Spirits  
Peg Steunenbergh  
Sunrise Bistro & Catering / Ty Pearce  
Suzi Eszterhas Photography  
Touchstone Climbing - Diablo Rock Gym  
Trader Joe's Walnut Creek  
University of California, Berkeley

Urban Plates  
USS Hornet Sea, Air & Space Museum  
V. Sattui Winery  
VICI  
Bruce Vickroy, Steven Kent Winery  
Walnut Creek Marriott  
Wax A Peel  
Deborah Wechsler & Bruce Bilodeau  
Henry White  
Wild Birds Unlimited  
Wild SF Tours  
Woodhouse Day Spa  
YogaWorks  
Zachary's Chicago Pizza, Inc.  
ZUNI Cafe

We have made every effort to spell names accurately. If your name or donation has not been recorded correctly or was mistakenly omitted, we offer our apologies. Please contact us so that we can amend our records.

Mount Diablo Buckwheat rediscovered by botanist Heath Bartosh (SMD Board member) and his colleague, Brian Peterson of Nomad Ecology.

Marsh Creek Trail proposed.

Protected 76-acre Hanson Hills property with EBRPD & HCP.

Won California Non-Profit of the Year Award, Assembly District 16.

SMD acquired our first perpetual Conservation Easement!

**45th Anniversary.**  
Protected Land has expanded from 6,788 acres in 1971 to 110,000 acres in 2016.

2017

& BEYOND...

**45 YEARS**  
of collaboration

## Events

Caleb Castle

# Diablo Trails Challenge

April 2017

Scott Hein

## Mount Diablo Challenge



Caleb Castle

THANKS TO OUR 2016 SPONSORS!

Scott Hein

# 4 DAYS DIABLO

## Save the Dates! April 26-29, 2017

**4 Days Diablo** is a “Gently Roughing It” small group camping trip that leads you on a 30-mile adventure through rarely seen Mount Diablo landscapes, led by expert naturalists, botanists and birders.

While you tour and examine the majestic Diablo wild lands, staff transports your gear and sets up your new camp. Each night, you'll enjoy wine and mouthwatering gourmet dinners prepared on the spot by premier East Bay restaurants.

### FOR INFORMATION

Call Save Mount Diablo at (925) 947-3535 or visit our website at [www.savemountdiablo.org](http://www.savemountdiablo.org)

Tribute gifts and donations in honor or memory of loved ones made between January 1st - June 30th, 2016 are listed below.

*Thank you to all of our supporters. Your generosity preserves, defends and restores the mountain for all of us to enjoy!*

## In Honor Of

*Seth Adams*

Diablo Valley Democratic Club

Cindy Spring & Charles Garfield

Cary Stevens & Allen Green

*Seth Adams & Aaron Chabot*

Cary Stevens & Allen Green

*Marty & Jen Ambacher*

Clyde & Lois Ambacher

*Martin Aufhauser's Retirement*

Barbara & Marty Gerber

*Steve & Brenda Benkly*

Jody & George Benkly

*Bianca Bloom's Birthday*

Gail Kyono

*Ron Brown*

John & Linda Judd

Steve Kaplan

Michael & Anita Korenstein

Stuart & Barbara Mc Cullough

Geoffrey & Valerie E. Meredith

*Josephine Nola Casto's Birthday*

Amanda Casto

*Camille Chabot #CamilleStrong*

Kerrie Chabot

*Ted Clement's Birthday*

Elise Clement Cutler

*Lisa Cline's Birthday*

Leslie Maienschein-Cline

*Lowell Day*

Mildred Day

*Charla Gabert's 60th Birthday*

Scott & Claudia Hein

*Claudia & Scott Hein*

Darlene Hecomovich

*Meredith Hendricks*

Ginny Knott

*Dr. Gregory L. Hummel*

Gene & Jeannine Hummel

*Barbara Langlois*

Shirley Langlois

*Stephen Lewis*

Ron & Rebecca Yee

*Geoffrey & Valerie Meredith*

Thomas Meredith

*Maya Schechter's Birthday*

Doris S. Smith

*Julie Seelen*

John & Linda Judd

*Jeanne Thomas*

Joan S. Armstrong

Roger & Emily Ehm

*Winifred Wallace*

Shirley W. Hoffman



Stephen Joseph

## In Memory Of

*Linda M. Amdersson*

Bruce Fogel

*Dimitris Argyriou*

Frede Hammes

*Lucile Soule Arnon*

Stephen S. Arnon

*Nell Barker*

Michele Lasagna

*James Bruzzone*

Angela Call

*Bob Burchard*

Jo Pollack

*Engene Callahan*

Marianne Callahan

*Billy "Bud" Coleman*

Kristine Coleman

Craig & Christine Hagelin

Nancy Heinschel

*Tony Cone*

Tom & Carolyn Westhoff

*David Farabee*

Mike & Bonnie Barr

Michele Booth

Rita Breaux

Patty Deutsche

Pam Finlayson & Family

Alina Fortson

Joan Grimes

Robert Herr

Ron Kino

Ray & Robin McLaren

Pillsbury Winthrop Shaw Pittman LLP

Richard & Rayna Ravitz

Karen & Jeffrey Vesely

Western States Petroleum Assn.

*Anna Louise Ferri*

Lawrence E. Ferri

*Jim Fitzsimmons*

Bob & Vicki Henry

*Joseph Goldstein*

Janine Alden

Eldercare Services

Barbara J. Smith

*Beatrice Gordon*

Gaynel Wilhoyte

*Jim Jelter*

Anonymous

Scott DiSavino

Bettina Leong

*Toby Johnson*

Donald & Carole Johnson

*Lillian Kokores*

Joan Cole

*Brian Kruse*

Anonymous

Tobi Benz

Brentwood Teachers Association

Brentwood Union School District Office Staff

Bruce Colwell

Dena Craig

Gayle & Marc Crockett

Dana & Renee Eaton

Martin Griffin & Virginia Alves-Griffin

The CLC Group

Glenn & Kristi Harris

Mary Harris

Scott & Claudia Hein

Verna F. Kruse

Louis Leone

Deborah & Sam LiPetri

Cynthia Lovendusky

Viola Lovendusky

The Helen Cakebread Family

Lucy Meinhardt & Dave Zumwalt

Ron Nunn School

Ruth Shea

Neva Siemens

Malcolm & Casey Sproul

Everett Traverso

Tom & Rosamund Wentling

Sandra Woliver

Ybarra & Linch Families

*Jennie Lessmann*

Walter Lessmann

*Jenny Lyness*

Michele Lasagna

*Nick Martigopoulos*

Jeff & Jean Thatcher & Family

*Donald J. Meagher*

Kathleen Meagher

*Janet Montes*

Terry & Glenn Gonzalez

*William Morgan*

The Helen Cakebread Family

*Janet Mundy*

Tom & Cora Wright

*Dr. Tom Piatt*

Diana & Pete Hutchins

Frank Klobas

Jennifer MacDonough

Margaret E. Mowery

Margorie Rieger

Joan & Wilhelm Schaeffler

The Clark Wallace Family

*Danna J. Pierce*

Anonymous (2)

Janice Bedayn

Marian Bitzer

Kathy Davisson & Gene Cikota

Allen & Barbara Espenmiller

Jason Fong

Molly Lewis

Sydney Martinez

Margherita McIntosh

Kay McKeown

Meridithe Mendelsohn

Carl Ouillet

Lore Politzer

Marjorie Randolph

Paula Silver

Lorna Vierra

*Milton Pitre*

Gisela Pitre

*Annamarie Powell*

Scott & Claudia Hein

Beverly Magan

Paul Villani

*Dolores Price*

Elizabeth Clemente House

Valerie Cooper

Jill Douglas

Jim & Debbie Fleming

Guild of Quilters of Contra Costa County

Linda Hiatt

Ardis Jarrett & Sally Johnson

Kathy & Keith Rea

Marie Rea

Frances Singer

*Betts Sanderson*

Anonymous Loving Friends

Scott & Claudia Hein

Shirley Langlois

Mount Diablo Audubon Society

Kristen Noe

Shannon Riggs

Elizabeth Smylie

Summit Financial Group, LLC

Kim Tarman

*Annamarie Sokinger*

William Villani

*Gayle & Frank Servin*

Leslie Servin

*Dorothy Seyfert*

Ron & Sharon Brown

Natalie & George Ring Sr., Terri & Bob Fritts, George & Loretta Ring, Jr., & our children

*Shilling*

Pets Eternal Rest, Inc.

*Brian Smith*

Karoline Doberenz

*Joe Stadium*

Gerry Bertnick

Bob & Cindy Brittain

Bill & Nancy Campana

Meg Crosby

Scott & Claudia Hein

Evelyn Kennedy & Bob MacPherson

Daniel McGrath

David Ogden & Sandy Biagi

Barbara Scharf

Molly Singer

Ingrid & Curtis Wood

*Howard Thomas*

Judy Canright

*Frank Walden*

Barbara Walden

*Susan Watson*

Scott & Claudia Hein

D. Lowell Jensen

Beverly & Jim Lane

Shirley McPheeters & Wednesday Walkers

Shirley Nootbaar

Barbara J. Smith

Malcolm & Casey Sproul

Frank & Edith Valle-Riestra

Sonja Wilkin

*Dorothy & John Wells*

Marla Schmale & Frank Montoya

We have made every effort to spell names accurately. If your name or donation has not been recorded correctly or was mistakenly omitted, we offer our apologies and ask that you please contact us so that we can amend our records.



1901 Olympic Blvd., Suite 320  
Walnut Creek, CA 94596



Non-Profit  
Organization  
U.S. Postage Paid  
Concord, CA  
Permit No. 525



## Thanks for being a friend.

**AS A FRIEND OF THE MOUNTAIN,**  
*You help to preserve the Diablo wild lands for future generations.*

Whether you enjoy Mount Diablo when you are hiking, cycling, horseback riding, trail running, birding, painting, photographing, looking at it from your kitchen window, or taking in its breathtaking beauty at the end of a long commute home...

**This is your mountain. Become a member to protect it today.**

## NOT A MEMBER YET?

**JOIN US!**

*Contact us for more information.*

*Call or visit us online at:*

**(925) 947-3535 | [SaveMountDiablo.org](http://SaveMountDiablo.org)**

### **Enjoy a variety of perks based on your annual membership tier:**

- Members-only gear; - Recognition in our annual report;
- Our bi-annual Diablo Watch newsletter featuring stories about protected lands, habitat restoration, volunteer projects, and recreation opportunities;
- Invitations to exclusive members-only events, hikes and tours of Mount Diablo;
- Most importantly, your membership means you are committed to preserving the Diablo wild lands for future generations.

*"My dream is that the whole of Mount Diablo, including its foothills, will remain open space... that the visual and natural integrity will be sustained."*

*- Dr. Mary L. Bowerman*

### **Our Mission**

To preserve Mount Diablo's peaks, surrounding foothills, and watersheds through land acquisition and preservation strategies designed to protect the mountain's natural beauty, biological diversity, and historic and agricultural heritage; enhance our area's quality of life; and provide recreational opportunities consistent with the protection of natural resources.

### **What We Do**

**PRESERVE** natural lands through acquisition and cooperative efforts.

**DEFEND** Mount Diablo and its foothills from threats of development through land use planning.

**RESTORE** habitat prior to transfer to a public agency for permanent preservation and public use.

**ENJOY** Diablo's parks through events and recreational opportunities.

### **Why We Care**

This is our home. Preserving natural land forever means safeguarding our quality of life, including our air, water, and views. Only half of Mount Diablo has been preserved. The other half of the mountain, over 70,000 acres, is privately owned and still threatened by development. That means risking the loss of wildlife corridors, ecosystems and recreational opportunities.