

# Diablo Watch

SPRING/SUMMER 2018 | No. 65

## Let Antioch Voters Decide

*The Sand Creek Open Space  
Protection Initiative*

### Defending Anderson Ranch

*A Jewel in the Marsh Creek Necklace*

### Forever Wild

*Capital Campaign Progress Update*



**Clean Water and  
Safe Parks Act**

*Your Vote Counts!*

### Protecting Our Mountain

*30th Anniversary Tribute  
to Land Conservation Director  
Seth Adams*







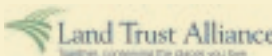
# Letter from the Executive Director

**BOARD OF DIRECTORS**

Scott Hein, *President*  
Burt Bassler, *Treasurer*  
Amara Morrison, *Secretary*  
Heath Bartosh  
Jim Felton  
John Gallagher  
Liz Harvey  
Claudia Hein  
Frank Martens  
Bob Marx  
Sue Ohanian  
Robert Phelps  
Malcolm Sproul  
Jeff Stone

**STAFF**

Ted Clement  
*Executive Director*  
  
Seth Adams  
*Land Conservation Director*  
  
Meredith Hendricks  
*Land Programs Director*  
  
Monica Oei  
*Finance & Administration Director*  
  
Jim Cartan  
*Stewardship & Outreach Manager*  
  
Caleb Castle  
*Communications Manager*  
  
Hidemi Crosse  
*Bookkeeper*  
  
Karen Ferriere  
*Assistant Development Director*  
  
Juan Pablo Galván  
*Land Use Manager*  
  
Shannon Grover  
*Development Administrative Assistant*  
  
Dana Halpin  
*General Office Manager*  
  
Katie Lopez  
*Accounting & Administration Associate*  
  
Roxana Lucero  
*Stewardship & Outreach Associate*  
  
Joanne McCluhan  
*Executive Assistant*  
  
Kristen Noe  
*Development Associate*



Cover: Stephen Joseph

We are so deeply grateful for you and inspired by you, our community, as you come together and step up to help us succeed with our first capital campaign, **Forever Wild.**

We have now raised \$10.4 million against our \$15 million goal, which will transform our organization in lasting and positive ways by providing us with a robust Stewardship Endowment Fund, Revolving Land Acquisition Opportunity Fund, and Legal Defense Fund upon completion. These funds will help us protect our beloved Mount Diablo and its associated open spaces for the lasting benefit of our community.

Experience the gratitude and inspiration in the following statements by members of our community who recently stepped up to make leadership gifts to the **Forever Wild** campaign:

*“Mount Diablo and its associated foothills have given me so much beauty and joy over the years. My love of the mountain and trust of Save Mount Diablo are why I donated twice to the Forever Wild Capital Campaign—with both gifts being my largest charitable gifts ever. You have to step up for what you love and not take it for granted.”* —Carol Lane

*“Our family moved to Contra Costa County in 1962, and since that time has been a beneficiary of living near Mount Diablo. During that period, we have been highly appreciative of and always impressed by the land conservation efforts undertaken by Save Mount Diablo, and towards the*

*expansion of open space land in and around the vicinity of Mount Diablo. Accordingly, we felt it appropriate and worthwhile, as well as a privilege, to contribute towards the Forever Wild Capital Campaign.”* —Nootbaar Family

*“We have hiked, admired and benefitted from the Mount Diablo area for decades so we were grateful for the opportunity to make an irrevocable bequest to Save Mount Diablo’s Stewardship Endowment Fund because it was the best way for us to create a lasting green legacy that will help take care of our beloved mountain, for the community’s benefit, for generations to come.”* —Dick and Laurie Morrison

When our community comes together for our mountain, beautiful and lasting good comes out of that. We were recently reminded of this at the wonderful 30th work anniversary celebration for Seth Adams on March 22nd at the Leshner Center, where we thanked Seth and the community for all the great conservation accomplished thus far. **Forever Wild** provides an incredible vehicle for our community to come together for Mount Diablo and give thanks for it—while also ensuring our mountain and its foothills continue to provide lasting green good for the Bay Area.

With Gratitude,

*Ted*



Edward Sortwell Clement, Jr.  
*Executive Director*  
Save Mount Diablo

Diablo Watch is published twice yearly for friends of Save Mount Diablo, a nationally accredited land trust and 501(c)(3) organization.



# California Voters Call for **Clean Water and Safe Parks**

California must lead the way. Our state is feeling the effects of climate change—from severe droughts to devastating wildfires—yet our federal government is refusing to act.

On the June ballot, Californians will have a chance to address some of our state’s most important water, park, and natural resource needs.

At a time when California faces more frequent and severe droughts, damaging wildfires, floods, and the impacts of climate change, Proposition 68 invests in safeguarding our water supplies and preparing for future challenges and natural disasters.

Prop. 68 also helps communities across California that lack access to safe parks and clean drinking water, ensuring that all California residents, regardless of zip code, have access to the safe, clean water that they deserve and safe places for kids to play.

As California faces droughts, wildfires, and the growing impacts of climate change, passage of Prop. 68 has taken on increased urgency. The bond includes strict financial accountability provisions and is designed to help every region of the state, from coast to farmlands, mountains to cities.

That’s why Save Mount Diablo is in strong support of Prop. 68, a \$4 billion investment in the coming years to protect California’s own unique natural resources and ensure every Californian has access to clean drinking water and safe parks.

“Due to a lack of state funding, Brentwood’s Marsh Creek State Park—3,659 acres of natural habitat, wildlife, and historic cultural features—is not yet open to the public,” said Ted Clement, Executive Director of Save Mount Diablo. “This June, Californians have an incredible opportunity to approve Proposition 68, the California Clean Water & Safe Parks Act, which will provide the critical resources to open wonderful places like this for all Californians.”

We’re not alone in our support. We’ve joined a broad, bipartisan coalition of conservation groups, local park advocates, water experts, and business organizations committed to supporting Yes On 68 California and protecting our state’s water and parks for years to come.

Notable supporters include Governor Jerry Brown, The Nature Conservancy, The Trust for Public Land, the Association of California Water Agencies, The California Chamber of Commerce, League of California Cities, American Lung Association in California and other public health advocates.

“If the voters of California choose to pass Prop. 68, many parks and open spaces here, and elsewhere, will receive their first significant infusion of state funding in 15 years. Marsh Creek State Park could become California’s newest opened state park, and we are so excited about that,” said Seth Adams, SMD Land Conservation Director.

We are proud to support Yes on 68 as it takes a smart and efficient approach to protecting California’s natural resources. Protecting California’s beautiful natural resources, like parks and water, will ensure California remains a global destination. We support @Yes68CA as it provides a smart approach to protecting California, while stimulating our economy with tourism and jobs.

Now, more than ever, we must protect our water and parks. If we won’t, who will? Let’s keep California, California. On June 5th, Vote Yes on Prop. 68.

*To learn more about Yes On 68 California and what you can do to help spread the word—such as endorsing Prop 68, sending an email of support or sharing content via Facebook and Twitter—please visit the Prop 68 website at [www.yes68ca.com](http://www.yes68ca.com).*



Marsh Creek State Park, California’s newest state park, does not yet have enough resources to open the park for public access.



**Now, more than ever, we must protect our water and parks. If we won’t, who will? On June 5th, vote YES on Prop. 68!**



Kristin McCleery



# Let Antioch Voters Decide: The Sand Creek Open Space Protection Initiative

**Right now, we are involved in a massive grassroots effort in Antioch. Antioch residents, together with Save Mount Diablo, community groups, and other environmental groups have formed the Antioch Community to Save Sand Creek Coalition. Together, we're working to qualify an Initiative for the November 2018 ballot that would achieve major conservation gains.**



“Let Antioch Voters Decide: the Sand Creek Area Protection Initiative” (Initiative) would protect three square miles of open space (more than 1,800 acres) in south Antioch, from Deer Valley Road to Black Diamond Regional Preserve, from massive development. It would force any proposal for land uses other than agriculture, open space, or extremely low-density rural housing to be put to a vote of Antioch residents. So if a proposal comes along for a several-hundred or thousand house subdivision, Antioch voters would decide directly if that's something they want. Our Initiative also makes Antioch's current Urban Limit Line (ULL) permanent. Currently it could be changed or even erased by a vote of the City Council at the end of 2020.

We've been stepping up our involvement here since early 2015, when a 1,600+ house subdivision called 'The Ranch' was proposed in the Sand Creek area. Now we've jumped in with both feet. In late 2017, we helped get a plan for more than 4,000 houses in this area indefinitely tabled by the City Council. Since early March of 2018, a group of highly dedicated volunteers has been working hard to gather thousands of signatures. If we reach our signature goal by late May, then the Antioch City Council has to either put it on the November 2018 ballot for a vote of Antioch residents, or adopt it outright.

We're making progress and are activating people that have never even heard of Save Mount Diablo before, but we need more help.

The Antioch Community to Save Sand Creek Coalition, which includes Save Mount Diablo and other environmental groups are working to strike the balance between housing development projects and conservation priorities in Antioch's Sand Creek Focus Area, in an effort to maintain the "quality of place" that makes the greater Bay Area such an ideal place to live. For more information, visit [www.letantiochvotersdecide.org](http://www.letantiochvotersdecide.org).

We need more volunteers. It doesn't matter where you live, you only need to be over 18 to collect signatures. The need is urgent.

In mid-March, 'The Ranch' development project went public with its Environmental Impact Report (EIR). This brings the project one step closer to getting approved. The project proponent, southern California developer Richland Communities, is trying to get the approval before our Initiative can be voted on. Their EIR is almost 3,000 pages long, and the public only had 60 days to comment on it. Among other significant impacts to air quality, aesthetics and other things, their own report admits that their project will cause an additional 13,000 car trips per day in south Antioch. This is surely an underestimate, and they haven't even admitted the significant impacts the project would have on water, rare wildlife, natural habitats and other things people in Antioch and the whole region love.

## Get Involved!

**We need your help to stop this project and protect the beautiful hills, creek, wildlife and grasslands of the Sand Creek Area. Email [jpgalvan@savemountdiablo.org](mailto:jpgalvan@savemountdiablo.org) or call us at (925) 947-3535 to volunteer now.**





**ON** Thursday, March 22nd, a sold-out crowd gathered at The Leshner Center for the Arts to celebrate a special event: Land Conservation Director Seth Adams' 30th anniversary with Save Mount Diablo.

Three hundred of Seth's friends and allies joined SMD's board and staff to commemorate the many milestones achieved protecting, defending and restoring Mount Diablo's irreplaceable wild lands over Seth's storied career.

Seth Adams became SMD's first staff member in 1988. He focuses on advanced policy, land use and advocacy, government relations, acquisition projects, and educational and media programs. Seth has earned his stripes as a conservation hero of the East Bay with his enduring quest to protect Mount Diablo and its foothills. He has helped Save Mount Diablo grow into a major force for conservation in the East Bay. Over his career, Diablo area conservation has accelerated—protected lands in the East Bay have tripled.

At the event, Seth stated: "I've been a naturalist for as long as I can remember. The common thread of my childhood is that I spent a lot of time alone outdoors. It's where I developed many of my core values. My simplest and most significant philosophies are to try and leave things better than I found them."

"Save Mount Diablo was originally most focused on the mountain's two main peaks, but there's a great story about Senator John Nejedly pushing our co-founder Mary Bowerman to define the ultimate boundaries for Mount Diablo State Park.

"In the 1930's when Mary was a graduate student at UC Berkeley, botanical graduate students were often assigned a local mountain peak because the soils were thin and the botany rich. Mary's original botanical study boundaries were the Mt. Diablo topo-quadrangle, about 35,000 acres. Thirty-five years later, in her mid-60's Mary helped found Save Mount Diablo. Think about that in terms of what we can all strive for. Mary was 63 years old when she started her most important work.

"And here's the powerful state senator, trying to get this smart, reserved but determined woman, to commit to an ultimate boundary for her mountain. On a big map of the county he put his hand at Morgan Territory Road. She said, 'A little bit further.' He put his hand a little further east, and she said, 'A little bit further.' When he finally reached the county line and the Delta, Mary said, 'that's about right.'

"We have protected an area bigger than Mary's study boundaries. We have reached the county line. It's a patchwork puzzle with many gaps. Those gaps in the area north of Highway 580 and Altamont Pass are about 60-70,000 acres. If they're lost, much of the beauty and richness of Mt. Diablo will also be damaged and lost."

When asked what drives him, Seth responded: "In the past few decades, we've tripled public lands here in the East Bay. A third is protected, a third developed, and a third hangs in the balance. Would you rather double the footprint of development or protect the remaining ranches and farmland and wildlife habitat? Believe me, there is plenty of already developed land that can be used more efficiently."

He continued, "There is a fundamental difference between those of us who think parks and natural lands are small areas we visit, as opposed to our life support system. The question is not how much do we want to save, it's how much can we afford to lose before the system breaks down. We are at that tipping point. We have to limit and reverse the damage."

Among Seth's accomplishments are participation in the preservation of tens of thousands of acres of public parklands; creation and defense of Urban Limit Lines; aid in development of hundreds of millions of dollars in conservation funding; helping to create the East Contra Costa

County Habitat Conservation Plan and the Concord Naval Weapons Station Reuse Plan; new recreational trails such as the 30-mile Diablo Trail; and reintroduction of endangered peregrine falcons to Mt. Diablo. He has been involved in many successful political campaigns throughout Contra Costa County and the East Bay. Now, Seth is working to popularize the 150-mile Diablo Range, California's next big conservation story.

Seth attended Michigan State University and the University of California-Berkeley. He lives in Martinez, California with his husband Aaron Chabot and their dog, Bolt.

### Make a Tribute Gift

You can make a gift in honor of Seth Adams' 30th Anniversary online at [www.bit.ly/Sethaversary-Gift](http://www.bit.ly/Sethaversary-Gift).

Your gift in his honor will help achieve his goal of preserving Mount Diablo and its surrounding foothills for future generations of people and wildlife to enjoy.

# 30 YEARS

## PROTECTING OUR MOUNTAIN

### An Anniversary Tribute to Seth Adams, Land Conservation Director, Save Mount Diablo

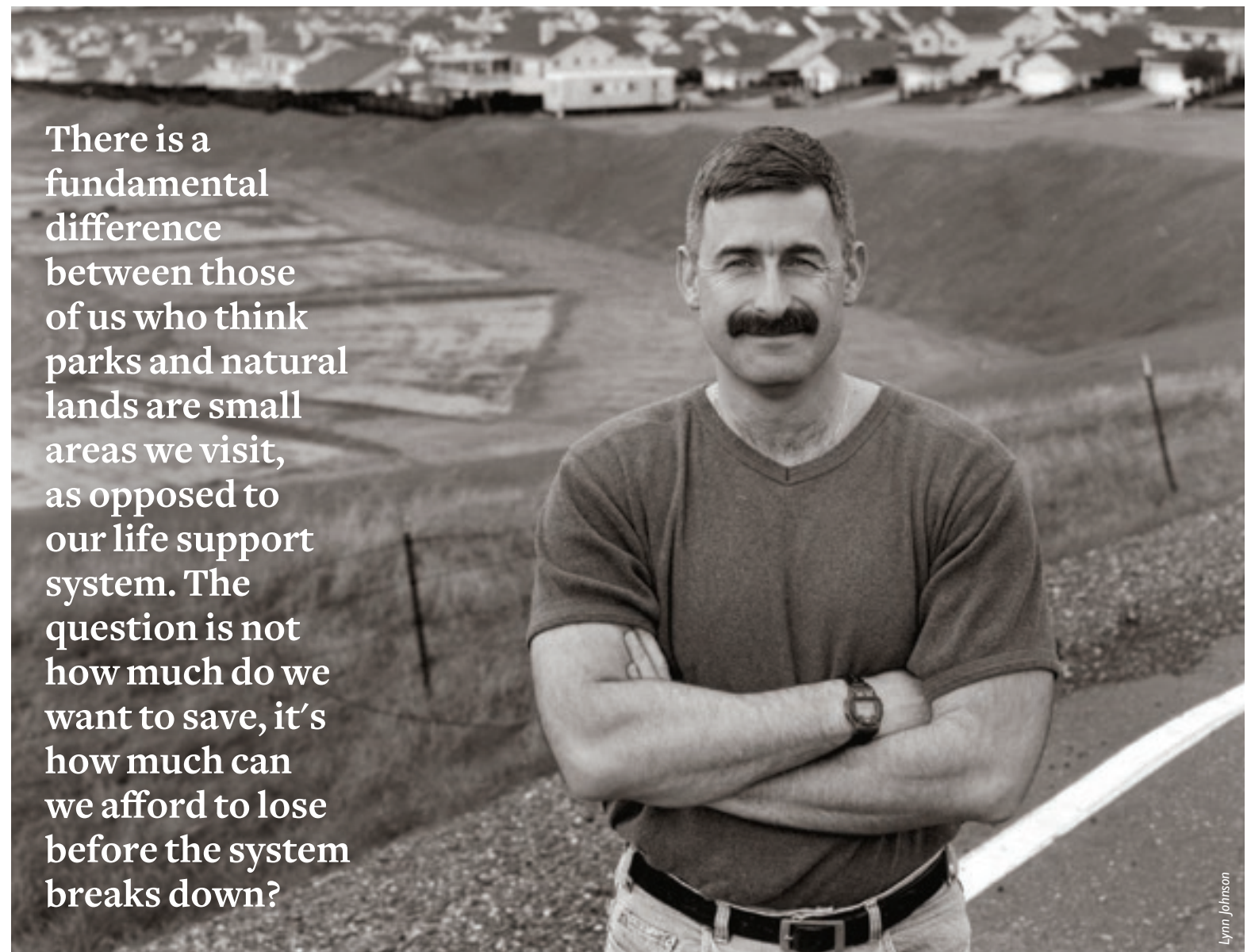


"I've been a naturalist for as long as I can remember. The common thread of my childhood is that I spent a lot of time alone outdoors. It's where I developed many of my core values. My simplest and most significant philosophies are to try and leave things better than I found them."

C/O Contra Costa Times



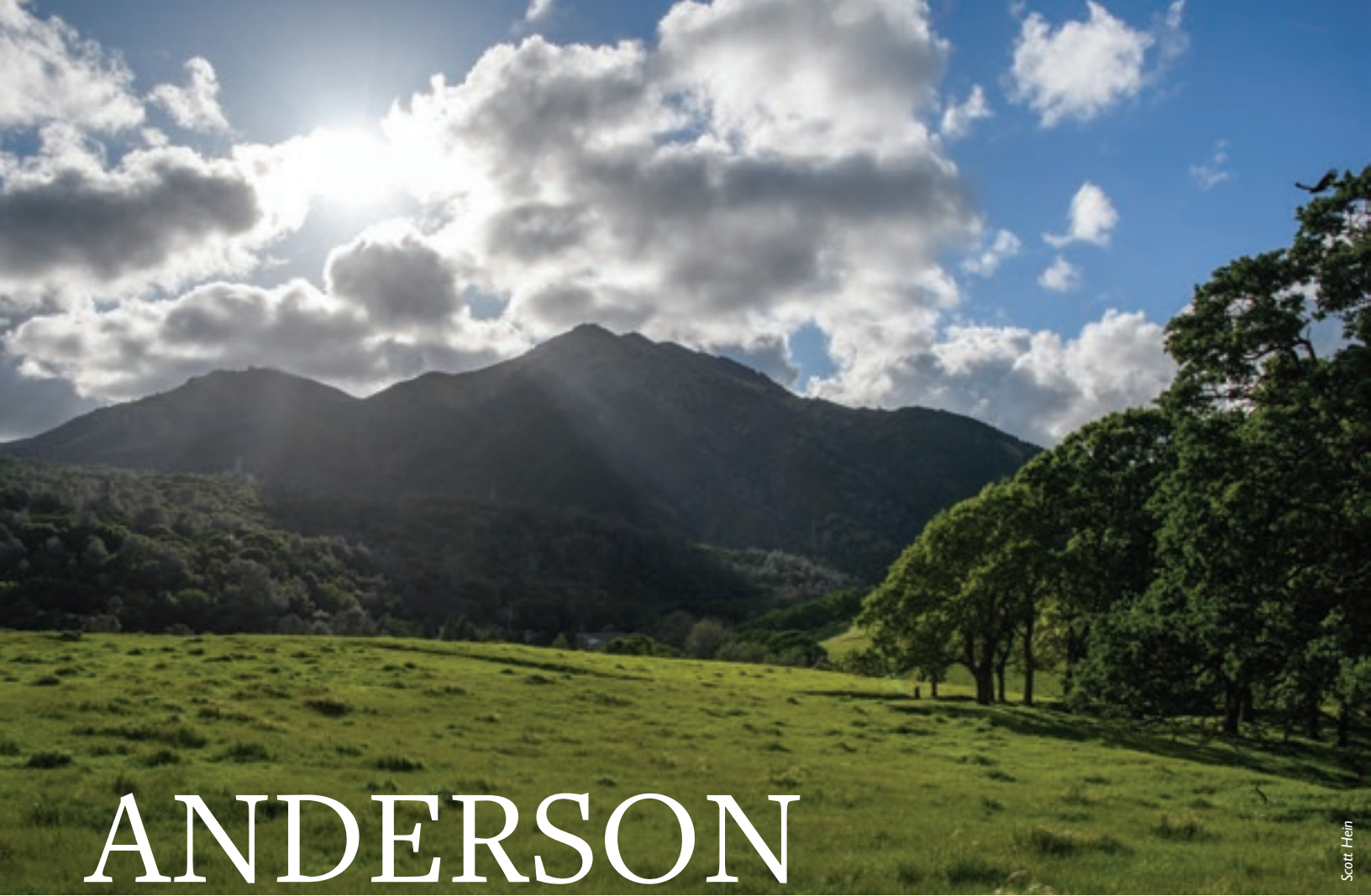
Now, Seth is working to popularize the 150-mile Diablo Range, California's next big conservation story.



There is a fundamental difference between those of us who think parks and natural lands are small areas we visit, as opposed to our life support system. The question is not how much do we want to save, it's how much can we afford to lose before the system breaks down?

Lynn Johnson





Scott Hein

# ANDERSON RANCH

Situated on the south side of the mountain, this historic 95-acre ranch has ranked high on Save Mount Diablo's wish list for decades due to its outstanding conservation values.

## 

After 40 years of defending Anderson Ranch, its preservation took just 6 months. We closed escrow on Thanksgiving 2017.

In a transaction marked by years of effort and patience, Save Mount Diablo purchased the beautiful and sought-after Anderson Ranch in Morgan Territory for \$800,000. The 95-acre Ranch has ranked high on Save Mount Diablo's wish list for forty years because of its outstanding value for native plants and wildlife, its critical location, and the threat of development that loomed over it for decades.

### OUR WINDOW OF OPPORTUNITY

The property is one of the rare places in Contra Costa County outside of the Urban Limit Line where a significant major subdivision was still being considered, as an approved 40-unit subdivision sat in wait for years. Finally the owners got tired of waiting for development and put the parcel on the market.

We knew the day we toured the property in April that we wanted to buy it. It's one of those beautiful places you assume has already been protected. Heavy rains had turned the parcel emerald green and storm clouds kept parting to shoot brilliant rays of sunlight down onto the landscape. Honestly, it could have been Ireland.

Highly visible from the Marsh Creek Road "Scenic Route," the property sits on a stunning plateau in our top priority acquisition area at the north end of Morgan Territory Ridge. It is bordered by Marsh Creek and close to two of our other Marsh Creek properties, allowing us to assemble more habitat.

We could not have protected the property if we had not already received your ongoing financial support, which allowed us to act quickly. Save Mount Diablo became concerned about increased visibility to potential buyers due to the temporary access road opened across the property during the closure of Morgan Territory Road because of a landslide. Fortunately, Save Mount Diablo's purchase of the property ended that large-scale development threat forever.

### GETTING TO KNOW ANDERSON RANCH

So what happens after we buy a property? First, we get to know it and our neighbors. In the case of Anderson Ranch, we were able to spend time exploring it—looking for ponds and lengths of creek, seeing how far up a hill the oaks grow and what the view is like—while the property was for sale. There was significant due diligence before we closed escrow.

Nintey-five acres is big, though. It will take years to get to know Anderson Ranch well. That process will be more complicated because of challenging access. We knew that once we owned it, our regular access to the property would not be the temporary bypass road that served the Morgan Territory area during slide repairs.

Part of what makes Anderson Ranch an interesting property to take care of is also what helped save it for so many years—the legal access involves scrambling across Marsh Creek on foot. No bridge was ever built to cross Marsh Creek to access the property, by foot or by car.

With today's regulations, environmental considerations and construction costs, adding a bridge is pretty darn hard to do. So, that may have kept potential buyers away. Had a vehicle bridge been built forty years ago when the subdivision was first proposed, what would the property look like now? Almost certainly the open hillsides would be covered with dozens of houses. But no bridge exists and Anderson Ranch is undeveloped habitat with decent fencing and stunning views of Mount Diablo.

### MEETING OUR NEIGHBORS

After exploring the property and getting a sense of our major initial obligations on the site (primarily fire abatement and monitoring to prevent vandalism and dumping), we reached out to the neighbors surrounding it and held an open house to meet them. Most of them are pretty happy that their hills will be protected. Some are concerned, of course, about what other changes might be in store.

John Gallagher, our stewardship committee chair, and our Stewardship staff chatted with our new neighbors over coffee and bagels in March to introduce ourselves and the organization, talk about how best to notify each other of happenings on and around the property, and address questions and concerns.

Neighbors were interested to know that while Save Mount Diablo does not generally open our properties for public access, we work to get them added to public park systems. We do host free hikes on many of our properties and Anderson Ranch will be included in our *Discover Diablo* program.



Scott Hein

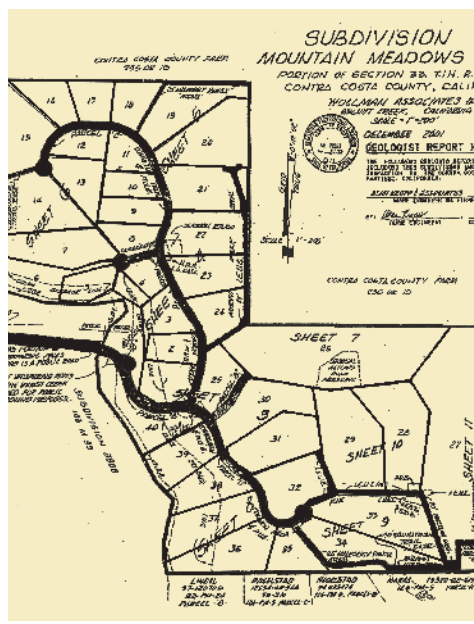
Anderson Ranch was highly sought after because of its outstanding conservation value. The approved 40-unit subdivision development (map at right) is no longer a threat, and the ranch will now be protected in perpetuity.

Our volunteer property stewards are our best ambassadors. They monitor properties monthly and get to know the property intimately while building relationships with neighbors. We explained that we welcome anyone to join our volunteer stewardship committee to help us monitor and maintain our properties. We ended the morning with several new recruits into our stewardship program and a better sense of the strong

relationship folks already have with Anderson Ranch, as a result of seeing it from their homes or driving on it for so many months during the landslide.

### WHAT'S NEXT?

So, after 40 years of real development threat, Anderson Ranch has been saved. Acquisition is just the first step though. We'll work hard to protect resources, and hopefully to enhance them. As we get to know the property better, it will reveal its secrets to us.



Al Johnson

**Learn More**  
You can read much more about Anderson Ranch's preservation at: [www.bit.ly/Anderson-Ranch](http://www.bit.ly/Anderson-Ranch)



# Growing Our Sense of Community

In the spirit of Valentine’s Day 2018, Save Mount Diablo (“SMD”) and Pittsburg High School (“PHS”) signed a Conservation Collaboration Agreement in February 2018 to demonstrate our love and gratitude for the beautiful Mount Diablo natural area. Regarding SMD’s Conservation Collaboration Agreement program, PHS teacher Achilles Tiu stated, “I believe one of the key ways to get the next generation interested in conservation is to provide opportunities for our youth to get outside. Multimedia or virtual reality doesn’t hold a candle to the way actual interaction with nature can drive our students towards a deeper understanding and respect for environmental endeavors. We’re grateful for how Save Mount Diablo has provided these opportunities.”

SMD’s Conservation Collaboration Agreement program is for local schools and businesses, and there are three parts to implementing each Agreement. First, SMD staff provides in-class educational presentations about land conservation of the Mount Diablo area to participating students and/or employees. Then staff leads the participants in an experiential environmental service project (e.g., planting native grasses and trees) on one of SMD’s conserved properties and this outing also includes a solo on the land for each participant where they do a contemplative journal writing exercise about nature and their part in nature. Finally, in an act of educational and participatory philanthropy, the students and/or employees raise funds so that they can become members of SMD. SMD has a youth membership program with discounted rates.

Our Conservation Collaboration Agreement program is built upon the wisdom of Aldo Leopold’s “Land Ethic,” the proven power of solos in nature, and the recognition that we must all do more than just business as usual to help

address the widely documented “Nature Deficit Disorder” in our modern, wired society.

Aldo Leopold is considered by many to be the father of wildlife ecology and the United States’ wilderness system, and his “Land Ethic” is famously captured in his following statement: “We abuse land because we regard it as a commodity belonging to us. When we see land as a community to which we belong, we may begin to use it with love and respect.” He presented his “Land Ethic” as a set of values that naturally grew out of his lifetime of experiences in the outdoors. Leopold wrote that “we can only be ethical in relation to something we can see, understand, feel, love, or otherwise have faith in.” He believed that direct contact with the natural world was crucial in shaping our ability to extend our ethics beyond our own self-interest. He hoped to inspire people to embark or continue on a similar lifelong journey of outdoor exploration, developing an ethic of care that would grow out of their own close personal connection to nature.

The solo (i.e., quiet and contemplative alone time in nature) is a proven way for people to grow their roots in nature. The Outward Bound School has been successfully utilizing the solo in nature since 1961, and the power of a solo in nature has also been recognized and demonstrated by many Earth centered cultures and traditions for eons.

We will also be doing Conservation Collaboration Agreements in April, in celebration of Earth Day, and November, in the spirit of Thanksgiving and giving thanks for our mountain—and through this program we will be growing our community’s sense of community.

After their solo in nature, PHS students used their journal notes to write Valentine’s Day cards to Mount Diablo.



# We Love Our “FOREVER WILD” Family

Thanks to the generosity of many contributors, including individuals, businesses and foundations, Save Mount Diablo has raised \$10.4 million through our capital campaign, FOREVER WILD.

AND WE’RE NOT DONE YET! We’re confident we will reach our goal of \$15 million—because we know that the preservation of Mount Diablo and its surrounding lands inspires a deep and true generosity that is virtually unmatched.

With community support, we will permanently conserve, defend and steward key vulnerable portions of the Diablo wild lands, transfer these properties to the public trust where appropriate, and stand ready to protect the threatened land that remains.

Your transformational gift to the Forever Wild initiative provide Save Mount Diablo with a *Revolving Land*

Acquisition Opportunity Fund, a Stewardship Endowment Fund and a Legal Defense Fund, enabling our organization to transform and shape the course of the future as it relates to the quality of life in Contra Costa County and beyond.

We’re grateful to you and all of our fabulous donors who have made a deep and lasting financial commitment to the Stewardship Endowment Fund, as gifts and bequests to this fund will generate income in perpetuity to specifically meet the ever-present financial obligations of stewarding current and future properties.

“Acquisition is a phase, stewardship is forever. When you buy land, you must also provide money to care for it in perpetuity.”

—Bill & Lesley Hunt, FOREVER WILD Donors

To make a gift or to learn more about FOREVER WILD, contact Ted Clement by phone at (925) 947-3535, by email at [tclement@SaveMountDiablo.org](mailto:tclement@SaveMountDiablo.org), or visit us online at [www.bit.ly/Forever-Wild](http://www.bit.ly/Forever-Wild)

# Multiply Your Money for Good... LITERALLY!

When was the last time you had a 100% return on an investment—the same day you wrote the check?

Well, thanks to the wonderfully generous people at the William H. Donner Foundation, you can make that magic happen! Your contribution to Save Mount Diablo, made through June will be matched dollar-for-dollar, up to \$50,000! Your \$50 gift becomes \$100; your \$500 becomes \$1,000; and even your \$5,000 becomes \$10,000! And we certainly need all the support we can get right now to protect our beloved mountain and open lands.

2018 is setting the record for challenges to defenders of wildlands and wildlife, and our community is no exception. Save Mount Diablo has seen redoubled pressures to develop open space in our area. In response, thanks to supporters like you, we’ve already taken huge strides toward protecting precious habitat and viewsheds.

For instance: In Antioch, we are working hard to help local residents qualify a growth-control initiative, so they

and their neighbors can make their voices heard at the ballot box in November. What’s at stake is the largest swath of remaining open space on the boundary of Antioch—and with it, the health and well-being of its ecosystem.

Another high-risk threat is the proposed Faria Hills development project, where as many as 1,500 houses could be crammed on top of more than 600 acres of scenic hills near Concord. Not only would the project destroy rare wildlife habitat, but it would also degrade the new neighboring park and irreparably damage beautiful views for all.

Though we are making real headway in stopping these threats, it is critical that we sustain our momentum for the second half of the year so we can win these and other time-sensitive initiatives. In Antioch, your contribution will help us ensure that the initiative secures enough signatures to be placed on the ballot and is then approved by voters. In Concord, your gift will keep us on the front lines to ensure that the gorgeous Faria Hills remain free of being carved up and paved.

There is no better time to give than now. By donating today, not only will you be supporting essential land conservation, but the William H. Donner Foundation will match your donation—**doubling its impact!** Protecting habitat and views that are at such high risk of being lost forever has never been more important.

Please make your most generous gift today!





**Save The Date:**  
**SATURDAY, SEPTEMBER 8, 2018**  
**4:00–10:00 pm**

Save Mount Diablo invites you to our 17th Annual Moonlight on the Mountain celebration at Mount Diablo's China Wall benefiting our work to preserve, defend and restore Diablo's wild lands.

*To purchase tickets, call (925) 947-3535 or visit us online at [www.bit.ly/MoonlightMtn](http://www.bit.ly/MoonlightMtn)*



Stephanie Secest



**FOUR DAYS DIABLO**  
**2018**

**BIG thanks to our generous sponsors!**







Jim & Bette Felton  
 Scott & Claudia Hein

David Ogden

**BLACK DIAMOND MINES REGIONAL PRESERVE**

the rocks, the boomtowns,  
 and nature's remarkable recovery





Scott Hein




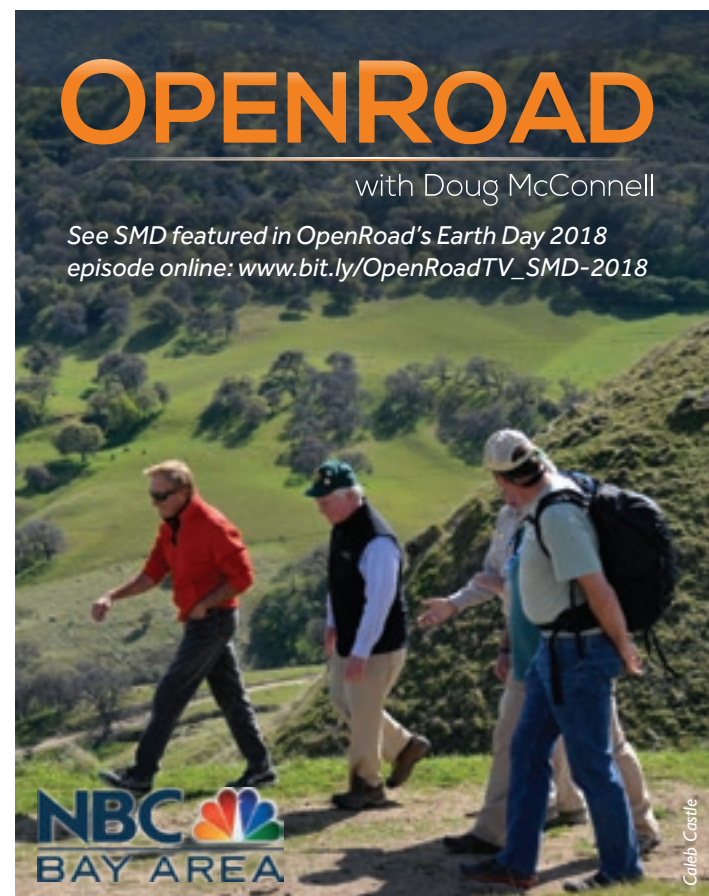
**AUDIBLE MOUNT DIABLO**  
[www.audiblemountdiablo.org](http://www.audiblemountdiablo.org)

C/O EBRPD

**OPENROAD**  
 with Doug McConnell

See SMD featured in OpenRoad's Earth Day 2018 episode online: [www.bit.ly/OpenRoadTV\\_SMD-2018](http://www.bit.ly/OpenRoadTV_SMD-2018)





Calab Castle

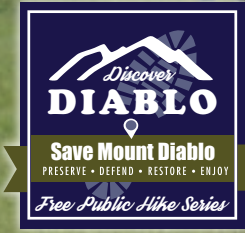
**Diablo Trails Challenge**  
**2018**

**Thanks to all who participated!**

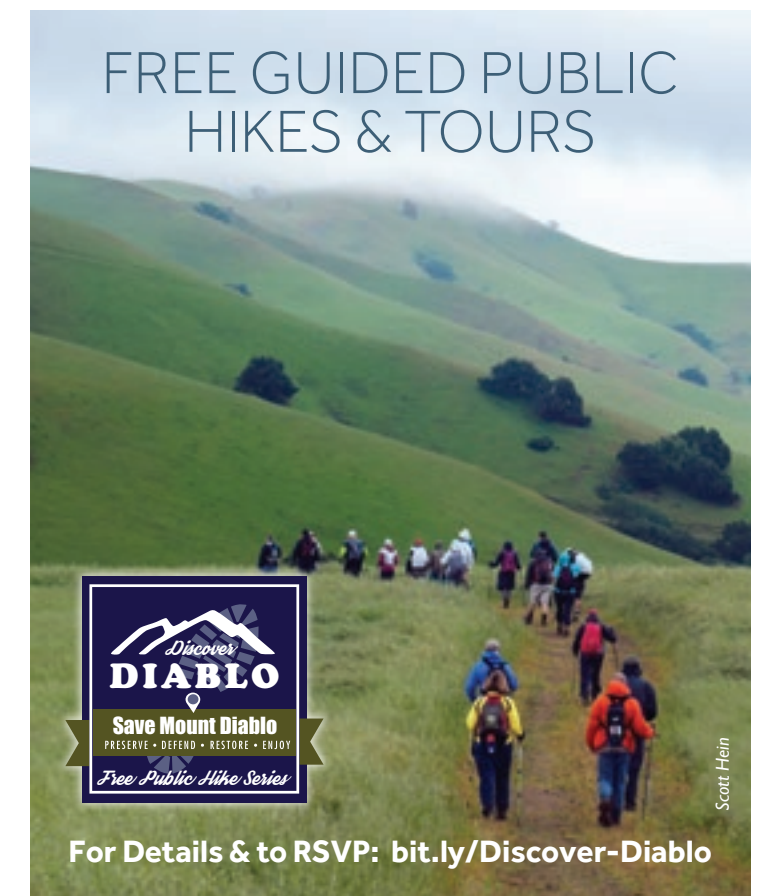


C/O Brazen Racing / Sara S.

**FREE GUIDED PUBLIC HIKES & TOURS**



**For Details & to RSVP:** [bit.ly/Discover-Diablo](http://bit.ly/Discover-Diablo)



Scott Hein





# TRIBUTE

Tribute gifts and donations made in honor or in memory of loved ones between July 1–December 31, 2017 are listed below. Thank you to all of our supporters. Your generosity preserves, defends and restores the mountain for all of us to enjoy!

*An asterisk (\*) denotes donors who make monthly tribute gifts.*

Stephen Joseph

*An asterisk (\*) denotes donors who make monthly tribute gifts.*

IN HONOR OF	
Seth Adams	
Paul Paton	
Sharon Walters	
Marty & Jen Ambacher	
Clyde & Lois Ambacher	
Lelsie Bartholic & Jake VanAkkeren	
Anonymous	
Burt Bassler	
Elissa Bassler	
Karen Beck	
Helen & Garrett Romain	
Dawn, Dave, Ted, Jim, Mike & the rest of the gang at SMD & Bedell-Frazier	
Judy Adler	
Benicia Bicycle Club	
Dr. A. Scott Overfield	
Marge Boyer	
Jim Boyer	
Ron Brown	
Steve Kaplan*	
Nicola Place & Chris Beeson	
Jim Cartan & the DiRT!	
Sam & Susan Sperry	
Ginny Fereira	
Ann H. Jackson	

*Molly, Ginny Ferreira's beloved lost cat*  
Rich & Judy Probert

*Vicki Flickinger*  
Gail Kyono  
Frances Tomsovic

*Andrew Ford*  
John & Ann Noll

*Brian Gagnon*  
Moira & Terry McCabe

*Shannon Grover*  
David Ogden & Sandy Biagi

*Sue & Phil Grover*  
Tim Rich

*Michael & JoAnn Hansen*  
Cyndi, Ryan, Chase & Jax

*Scott & Claudia Hein*  
Kathy Gleason  
Darlene Hecomovich  
Michael & Jane Larkin

*Meredith Hendricks*  
Deborah Toll White

*Hulet Hornbeck*  
Lawrence Hornbeck

*Gregory Hunter*  
Mike & Dixie Mohan

*Kaiser Imaging Staff, Walnut Creek*  
Leslie Servin

Mrs. Don Laston	Janet Laston Katzner
The Littell & Ziebarth Christmas 2017	Kenneth Ziebarth
Aeolian Isaac Magen	Amanda Casto
Jackie Maguire	William Maguire
The Mestemachers (Eva, Grace, Jackson, Melody & Matthew)	Matthew Mestemacher
Board Member	Amara Morrison
	Nancy Scott
Monica Oei	David Ogden
The Peregrine Team in Pine Canyon	Anastasia Hobbet
George Phillips	David Ogden
John Potocki	Kathleen S. Korpell
Nancy Raaum	Allison Raaum
Save Mount Diablo staff	Nicole & Jason Murphy
Ron Smith	The Ravitz Family

Our daughters, Cassandra & Susan	
Nancy & Wayne Snyder	
The Soule Family	
The Collett & Harris Families	
Leah, Chris, Will & Westley Spain	
Dylan Cate	
Malcolm Sproul's many years of service to Save Mount Diablo	
Allan & Kit Prager	
Staff & Volunteers at SMD	
Beryl Anderson	
Donald Lee Stookey	
Wayne Montoya	
Waylon & Hannah Stuart	
Susan Stuart	
Jeanne Thomas	
Roger & Emily Ehm	
Tim Wasserfall	
Anonymous	
Steve Yee	
Ron & Rebecca Yee	
IN MEMORY OF	
Lee	
Anonymous	
Maxine	
Anonymous	
Ken Adams	
Jeane Thomas	

## IN MEMORY OF

<i>Lenny Albrecht</i>	Ted Sciacqua
<i>Bill Allen</i>	Carole C. Allen
<i>Linda M. Andersson</i>	Bruce Fogel
<i>John &amp; Irene Arkwright</i>	Nancy Arkwright
<i>Brendon Armstrong</i>	Carol & Brad Hoy
<i>Patricia Barber</i>	Barbara A. Baxter
<i>Paul Baxter</i>	Carol Baxter
<i>Jonathan Bernbaum</i>	Edwin & Diane Bernbaum
<i>Bill Boyer</i>	Jim Boyer
<i>James P. Butler, Jr.</i>	Carolyn Butler
<i>Eugene Callahan</i>	Marianne Callahan*
<i>Bearl Casey</i>	Barbara Sickenberger
<i>Pauline Colarich</i>	Carolyn Critz
<i>Mary Ann Connors Watts</i>	Barbara J. Ageno
<i>John Crowe</i>	Mary Louise & Bruce Wilson

<i>Rose Mary Daniel</i>	Douglas & Claudia Allen
<i>Maxine &amp; Frank Davis</i>	Laura Davis
<i>Michael Elliott</i>	Nan O'Neil
<i>Roger Epperson</i>	Richard Davis & Sandra Jones
<i>Betty Falck</i>	Paul & Kendra Brown Richard Falck
<i>Anna Louise Ferri</i>	Lawrence E. Ferri
<i>Bill Fortner</i>	Patricia Draper
<i>Christy Franklin Friederich</i>	Joe Dingler Nancy Schrott Judy Weberling & Wayne Hagen
<i>Marian Fraser</i>	Bruce & Ellen Fraser
<i>Joanne Ghirardelli</i>	Gail Faber
<i>Beatrice Gordon</i>	Norwel Gordon
<i>Elliot Grant</i>	Joe & Charlotte Arton
<i>Marilyn Grigsby</i>	

*Gus & Isabel Haro*  
Joe & Susan Ryan\*

*Walter Hartman*  
Glenn Vaughn &  
Kami Leal

*Jean P. Hauser*  
Barbara Hauser

*Mary Israel*  
Thomas M. Wood

*James (Jim) Keane*  
Sue, John, Lauren  
& Marcie  
Michelle & Al  
Mammini  
Brian & Sandy  
Williams

*Brian Kruse*  
Margaret Kruse\*

*Peggy & Len Mahler*  
Barbara Mahler

*Donald W. Martin*  
Mary Louise &  
Bruce Wilson

*Craig McClure*  
John & Susan Tullis

*Donald Meagher*  
Kathleen Meagher

*Janet Montes*  
Terry & Glenn  
Gonzalez\*

*Dee Neuman*  
Bob Neuman

*Lenora Pierce*  
Ginny Ferreira  
Ann H. Jackson

<i>Horace &amp; Gladys Raymond</i>	Steven Raymond
<i>Pina Redmond</i>	James & Gloria Redmond
<i>Gary Rogers</i>	May & Larry Ball
<i>Beverly Rotell</i>	Gordon & Donna Monroe
<i>Ann Ryan</i>	Joe & Susan Ryan*
<i>Steve Sage</i>	Jeanette Hurwitz
<i>Irvin Salky</i>	Anonymous
<i>Betts Sanderson</i>	Mary C. Russell Kim Tarman
<i>Pat Spada</i>	Lena Kolle
<i>Charlotte Sproul</i>	Carmen & Douglas Goodin
<i>Joe G. Stadum</i>	Mary Alice Stadum
<i>Margaret Hornbeck Steele</i>	Richard & Shannon Merrill Thomas Nootbaar Sharon Wynn
<i>James Stewart</i>	Brett Stewart & Moogen Leary

*Vivian Sweigart*  
Terry & Glenn  
Gonzalez\*

*Ernie Tovani*  
Marge Tovani

*Ruth Wick*  
Barbara A. Baxter

*Brad & Ruth Wick*  
Kristen Wick

*Bill Zinn*  
William Farrenkopf

We have made every effort to accurately spell names. If your name or donation has not been recorded correctly or was mistakenly omitted, we offer our apologies. Please contact us so that we can amend our records by sending an email to Kristen Noe, Development Associate, at [knoe@savemountdiablo.org](mailto:knoe@savemountdiablo.org).

Our recently released 2017 Annual Report contained a few errors in the donor list, for which we sincerely apologize. We'd like to recognize the following generous donors and their giving levels: Jeanne Thomas (\$20,000-\$49,999), John H. Kiefer\*\*\* (\$5,000-\$9,999), Robert & MaryAnn McCleary / Joanne Ottone & Randy Hogan (Monthly Donor Circle)

Stephen Joseph

A photograph of three young girls in hiking gear (pink and grey jackets, hats) smiling and posing on a dry, grassy hillside. The girl in the center is holding a shovel. The background is a dry, hilly landscape.

Al Johnson

# What's Your Plan for the Future?

Protect the Diablo mountain  
range for generations to come and  
leave a legacy by providing for  
Save Mount Diablo in your estate plans.

---

*To learn more, contact Ted Clement at (925) 947-3535*

# What's Your Plan for the Future?

**Protect the Diablo mountain range for generations to come and leave a legacy by providing for Save Mount Diablo in your estate plans.**

*To learn more, contact Ted Clement at (925) 947-3535*



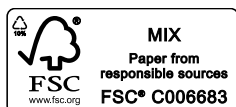


1901 Olympic Blvd., Suite 320  
Walnut Creek, CA 94596

Tel: (925) 947-3535

[www.SaveMountDiablo.org](http://www.SaveMountDiablo.org)

Non-Profit  
Organization  
U.S. Postage Paid  
Walnut Creek, CA  
Permit No. 1553



## Thanks for being a friend.

As a *Friend of the Mountain*, you help to preserve the Diablo wild lands for future generations.

Whether you enjoy Mount Diablo when you are hiking, cycling, horseback riding, trail running, birding, painting, photographing, looking at it from your kitchen window, or taking in its breathtaking beauty at the end of a long commute home...

This is your mountain. Become a member to protect it today.

## Not a member yet? Join Us!

Contact us for more information.

Call or visit us online at:

(925) 947-3535 | [SaveMountDiablo.org](http://SaveMountDiablo.org)

## Enjoy a variety of perks!

Based on your annual membership gift, you can receive:

- Members-only gear;
- Recognition in our annual report;
- Our biannual Diablo Watch newsletter featuring stories about protected lands, habitat restoration, volunteer projects, and recreation opportunities;
- Invitations to exclusive members-only events, hikes & tours of Mount Diablo



Jennifer Joy

*“My dream is that the whole of Mount Diablo, including its foothills, will remain open space... that the visual and natural integrity will be sustained.”*

—DR. MARY L. BOWERMAN

**Our Mission** To preserve Mount Diablo's peaks, surrounding foothills, and watersheds through land acquisition and preservation strategies designed to protect the mountain's natural beauty, biological diversity, and historic and agricultural heritage; enhance our area's quality of life; and provide recreational opportunities consistent with the protection of natural resources.

**What We Do** **Preserve** natural lands through acquisition and cooperative efforts.  
**Defend** Mount Diablo and its foothills from threats of development through land use planning.  
**Restore** habitat prior to transfer to a public agency for permanent preservation and public use.  
**Enjoy** Diablo's parks through events and recreational opportunities.

**Why We Care** This is our home. Preserving natural land forever means safeguarding our quality of life, including our air, water, and views. Only half of Mount Diablo has been preserved. The other half of the mountain, over 70,000 acres, is privately owned and still threatened by development. That means risking the loss of wildlife corridors, ecosystems and recreational opportunities.