

## MEDIA RELEASE

## FOR IMMEDIATE RELEASE

**Contact:** Seth Adams  
Director of Land Programs  
Save Mount Diablo

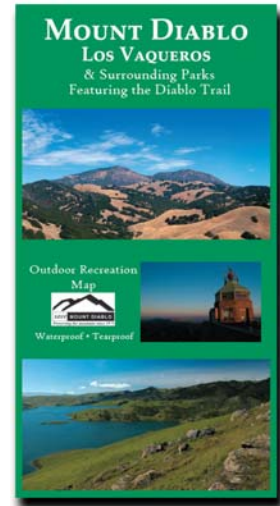
(925) 947.3535  
sadams@savemountdiablo.org

Two longer articles about the map, and the high resolution photos (by Scott Hein) and graphics shown below are available upon request. Please contact Beryl at [banderson@savemountdiablo.org](mailto:banderson@savemountdiablo.org) or 947-3535.

### Save Mount Diablo's new regional recreation map includes 90,000 acres of protected land, many "Firsts" and other unique details.

For the past two and a half years Save Mount Diablo's volunteer map committee has been working to produce the first regional trail map of the Diablo region, funded entirely with two grants from REI, Recreational Equipment Inc., totaling \$9,000. The map is now available to the public.

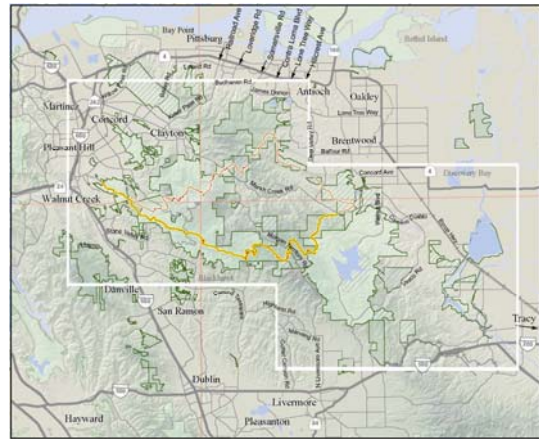
*"Mount Diablo, Los Vaqueros & Surrounding Parks, Featuring the Diablo Trail,"* SMD's new regional recreation map is a full color, double-sided, waterproof and tearproof map, which details nearly 90,000 acres of protected land throughout Central and Eastern Contra Costa County. No other map shows all of the Diablo parks in a unified design and in regional context. The map, which includes hill shading, illustrates what has been accomplished and what private lands still need to be protected.



#### A Vast Expansion of Recreational Opportunities

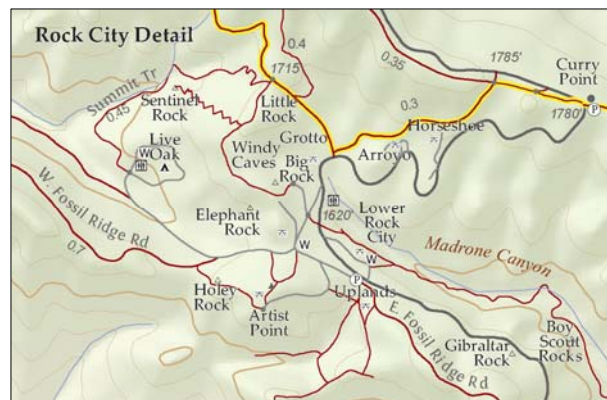
When SMD was formed in 1971 there was just one park on the mountain measuring 6,788 acres (about 10.5 square miles). In order to reach the park you had two choices—drive halfway up the mountain on North Gate or South Gate Roads before entering the Park gates. Public and protected lands around Mt. Diablo State Park have increased significantly since that time; the map covers 250,000 acres (390 square miles), of which over 90,000 acres are public or protected (141 square miles versus 1971's 10.5 square miles).

A hundred trail heads and staging areas are shown, and public trails cover 520 miles. Trail segment mileages and trail intersection elevations are included.



The map committee made an immense effort to accurately map every open space's trails, access points, and facilities—as well as all relevant cultural features. The map was GPS'd and GIS'd; volunteers walked hundreds of miles of trail with GPS units and other trails were digitized from and the map corrected with over 400 aerial photos to create the most accurate Diablo map ever produced.

John Kelly, our volunteer cartographer, for example donated almost 2000 hours to creating the map.



#### Two Maps in One

Generally, recreational users are most familiar with Mt. Diablo's west side and the upper elevations of Mt. Diablo State Park, where acquisition began in 1931, but most preserved land is actually east of

Diablo's summit, acquired over the past two decades. The map brings these new areas to the public's attention.

Mt. Diablo's two biggest public parks are Mt. Diablo State Park and the Los Vaqueros watershed, located diagonally from each other across Riggs Canyon, Highland and Morgan Territory Ridges. We could have easily justified two maps but instead made this one double-sided and overlapping, in part to make it more affordable, each side focusing on one of these two largest parks.



*SMD's volunteer Map Committee*

**The map covers 250,000 acres, including:**

1. 90,000 acres in fifty parks and other protected areas
2. 100 trailheads, parking lots or other access points.
3. Public trails cover about 520 miles, including fifty miles of paved trails (Iron Horse, Contra Costa & Ygnacio Canal trails, for example)
4. An additional 400 miles of private fire roads are shown in the background.
5. 3000 labeled features
6. 900 elevation points
7. a hundred creeks
8. fifty lakes and ponds
9. 800 mileage markers
10. eighty ridges, canyons and valleys
11. 130 miscellaneous cultural points

**The map is the first to show:**

12. All of the parks and preserves around Mt. Diablo, including for the first time,
  - a. Los Meganos State Historic Park
  - b. The 18,500 acre Los Vaqueros watershed in detail (almost as big as Mt. Diablo State Park's nearly 20,000 acres)
  - c. Vasco Caves Regional Preserve
13. All of the trails on and around the mountain
14. The 30 mile Diablo Trail, and the proposed 60 mile Diablo Grand Loop Trail
15. It is the first Diablo map to be GPS'd.

**Unified Design**

There are a variety of maps showing some (but not all) of the Diablo parks. Unfortunately, these maps are at different scales, limit the user to one specific park at a time and do not give a full sense of all of the Diablo parks in a regional perspective. The Save Mount Diablo trail map is the first to give a sense of the full scale of preservation around Mt. Diablo, and to show all of the regional trail connections to the mountain and between its various state, regional and local parks.



The map will be a tremendous aid for recreational users, whether for illustrating a myriad of possible experiences, or for depicting the regional connections that favor long hikes, backpacking trips, and equestrians and cyclists.

**30-mile Diablo Trail & 60-mile Diablo Grand Loop**

This map presents the 30-mile Diablo Trail to the public for the first time, including an elevation profile. Save Mount Diablo wanted to create a map that specifically details the Diablo Trail as it winds through



six different open spaces - Shell Ridge Open Space, Diablo Foothills Regional Park, Mt. Diablo State Park, Morgan Territory Regional Preserve, the Los Vaqueros watershed, and Round Valley Regional Preserve. The inclusion of the trail demonstrates more clearly the connections of parks across Mount Diablo from Walnut Creek to Brentwood and Livermore. The map also shows the proposed route of the 60-mile Diablo Grand Loop, which can be completed if just two small gaps are secured.

### GPS - Global Positioning Systems

Although numerous maps have detailed some of the parks in the East Bay, SMD's map presents all of these elements in a unified design, taking advantage of new cartographic technologies. Historically, trails were physically drawn onto a base topographic map. In drawn maps, features are often moved around to make room for labels and other information.

This map was surveyed by walking trails using GPS units—which locate trails, mileages, elevation and other features based on satellite triangulation—and then assembling and collapsing hundreds of layers and a vast database of information with ArcInfo GIS, Adobe Photoshop and Illustrator software. Not only will this information benefit future map editions, it also allowed automation in trail segment mileages and trail intersection elevations.



*“Mount Diablo, Los Vaqueros & Surrounding Parks, Featuring the Diablo Trail,”* SMD's new regional recreation map is full color, double-sided, 34" x 40", waterproof and tearproof. It is available at the SMD office for \$9.95 plus tax, or by mail for an additional \$3.55 in tax, postage and handling (total \$13.50). 1901 Olympic Blvd. Suite 220, Walnut Creek, CA 94596, 925 947-3535, [smdinfo@savemountdiablo.org](mailto:smdinfo@savemountdiablo.org)

**The map is also available at: REI-Concord**, 1975 Diamond Blvd Ste B100 (The Willows Shopping Center) Concord, CA 94520, and at **Forward Motion Sports - Danville Location** 432 Hartz Avenue, Danville, CA 94526 and **Walnut Creek Location** 1352 Locust Street, Walnut Creek, CA 94596.



*SMD's Seth Adams, volunteer cartographer John Kelly, and map committee member Ken Dyleski with GPS unit (above), and with map (below).*